



7 Severn Road, Aveley

Guide Price £425,000





7 Severn Road

Aveley, South Ockendon

Spacious Four-Bedroom Home in the Heart of Aveley

Located just a short walk from Aveley Town Centre, local shops, and excellent transport links, this well-presented four-bedroom mid-terrace home offers generous living space and practical features throughout.

The property boasts a large, fully fitted kitchen ideal for family living or entertaining, a bright and airy main reception room, gas central heating, and double-glazed windows.

The private rear garden with side access offers a great outdoor space, while the driveway provides ample off-street parking.

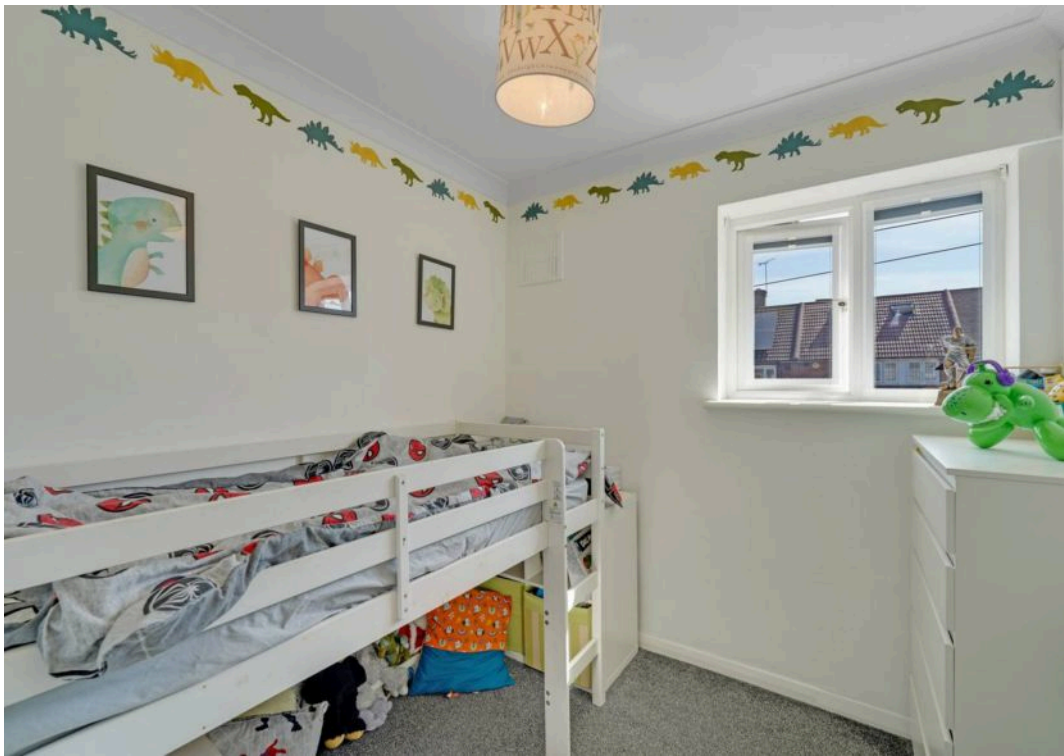
With spacious bedrooms—including a principal bedroom with en-suite—and a functional layout across both floors, this home is perfect for growing families or savvy investors alike.

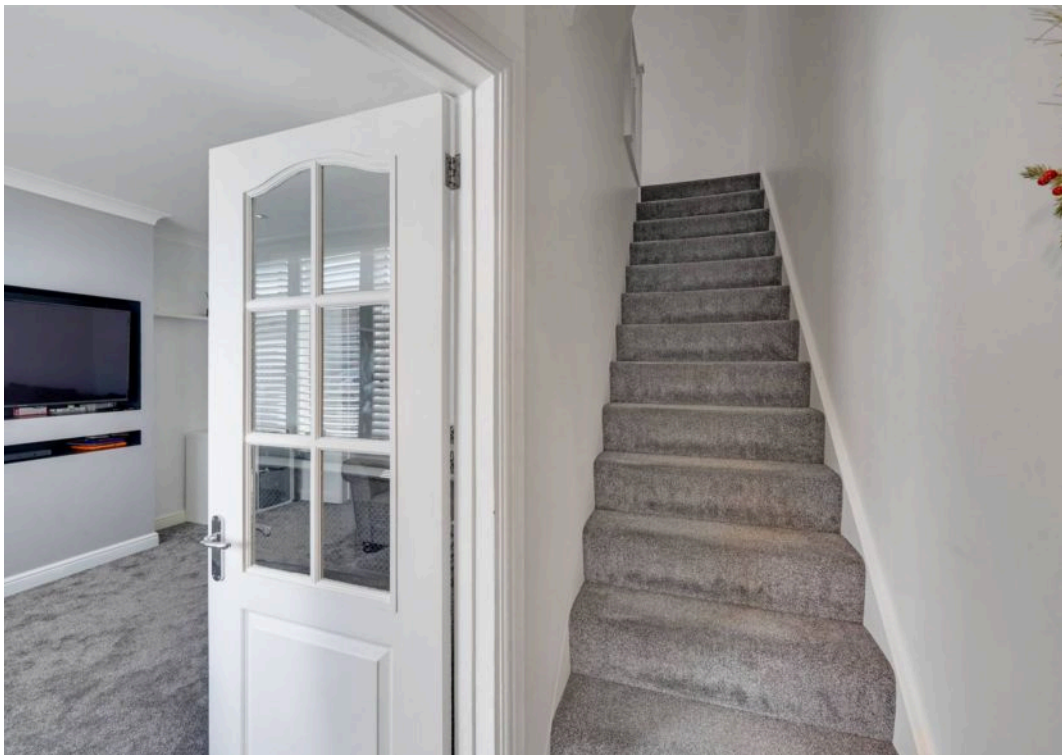
Key Features:

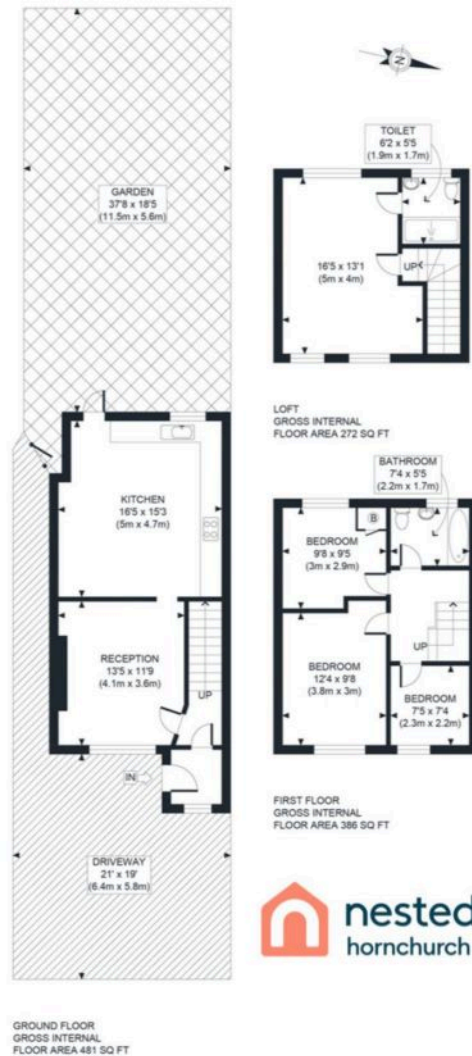
- Four generously sized bedrooms
- Spacious fitted kitchen (16'5 × 15'3)
- Main reception room (13'5 × 11'9)
- Principal bedroom with en-suite (16'5 × 13'1 | En-suite: 6'2 × 5'5)
- Double glazing and gas central heating
- Private rear garden with side access, outdoor power, and paving lights (37'8 × 18'5)
- Large driveway (21' × 19')
- Close to local schools, amenities, and transport links

Early viewing is highly recommended to fully appreciate all this property has to offer.









<p>APPROX. GROSS INTERNAL FLOOR AREA 1139 SQ FT / 106 SQM</p> <p>Disclaimer: Floor plan measurements are approximate and are for illustrative purposes only. While we do not doubt the floor plan accuracy and completeness, you or your advisors should conduct a careful, independent investigation of the property in respect of monetary valuation</p>	<p>Severn Rd</p>
	<p>02/05/25</p> <p>photoplan</p>



Nested Hornchurch

01708 970376 • bal.singh@nested.com • www.nested.com/hornchurch

