



## Moor Park, Wendover

In Excess of £525,000



# 15 Moor Park

Wendover, Aylesbury

**Charming Semi-Detached Home Backing Onto Open Fields – Moor Park, Wendover**

**\*Guide Price: £525,000 – £550,000\***

Tucked away on a peaceful no-through road, this beautifully updated three-bedroom semi-detached home enjoys views over open countryside and boasts a truly special rear garden with mature trees, a gentle stream, and a charming seating area across the bridge to soak up the view.

The accommodation has been thoughtfully modernised, with a stylish new bathroom installed in 2023 and a contemporary kitchen completed in 2025. Inside, the home offers a bright entrance hallway, a welcoming sitting room with feature fireplace, and a spacious kitchen opening into a generous garden room, ideal for entertaining or relaxing while looking out to the garden. A handy WC completes the ground floor.

Upstairs, you'll find two comfortable double bedrooms, a third single bedroom, and the updated family bathroom.







## Moor Park

Wendover, Aylesbury

The rear garden is a standout feature- bordered by mature trees. A gently flowing stream runs along the end of the plot, with a bridge leading to a peaceful bench positioned to make the most of uninterrupted views over the fields beyond.

Practicality is also well catered for with a garage, an insulated office (with light and power), and three further outbuildings offering excellent storage. The driveway provides ample parking for multiple vehicles.

Council Tax band: D

Tenure: Freehold

EPC Energy Efficiency Rating: D

EPC Environmental Impact Rating: D

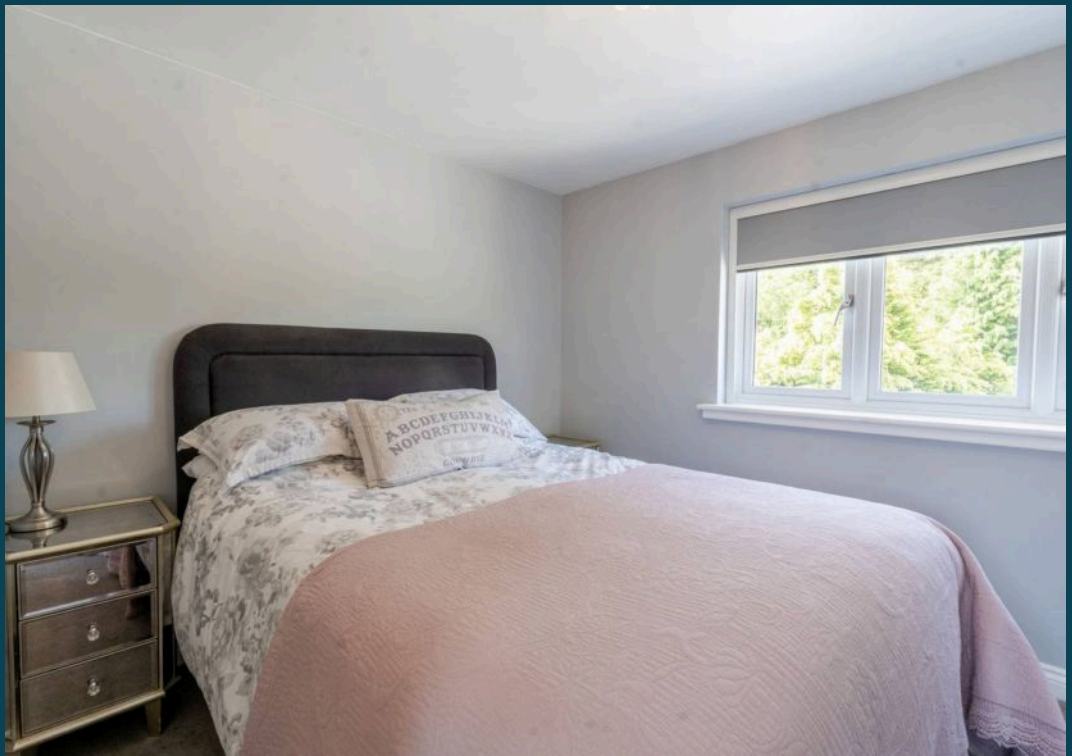


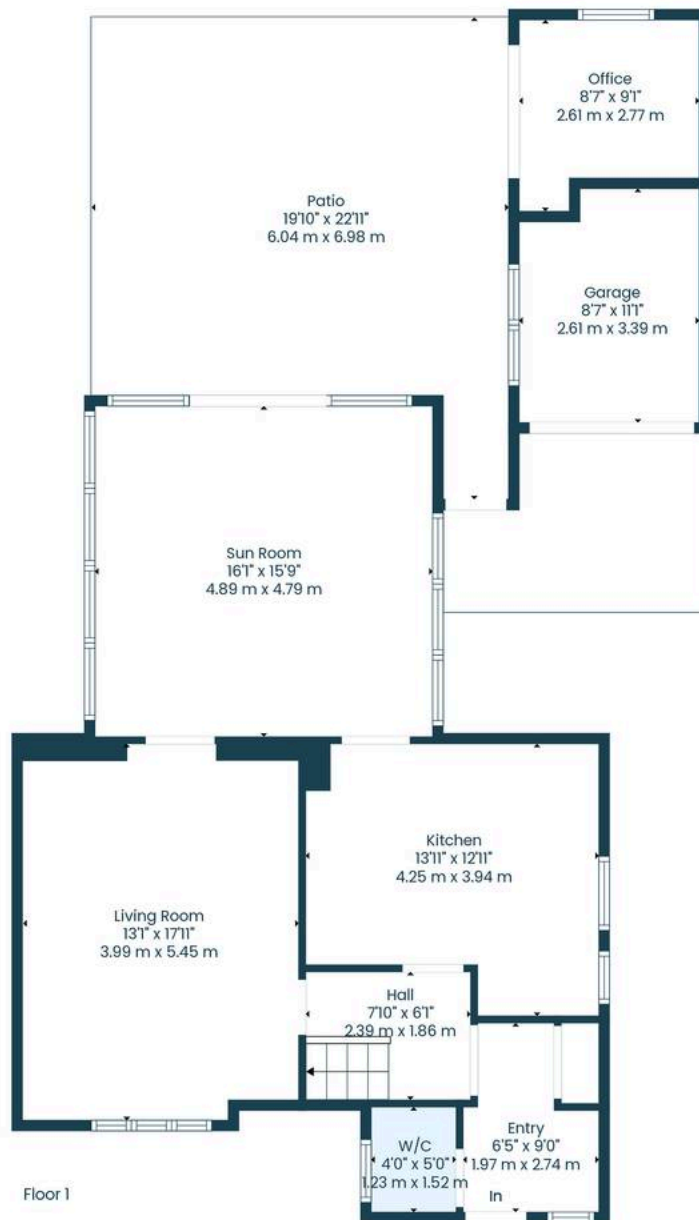
















## Nested Aylesbury

Tower House, High Street, Aylesbury- HP20 1SQ

01296920675 • [amy.lee@nested.com](mailto:amy.lee@nested.com) • [nested.com/aylesbury](https://nested.com/aylesbury)