



High Street, Weedon

Guide Price £550,000



High Street

Weedon, Aylesbury

Beautifully restored cottage with two receptions, bespoke kitchen, three bedrooms, period features, and a generous garden in a sought-after Buckinghamshire village.

Council Tax band: E

Tenure: Freehold

EPC Energy Efficiency Rating:

EPC Environmental Impact Rating:

- Grade II Listed
- Two reception rooms, each with a feature fireplace and working log burner
- Kitchen/breakfast room with vaulted ceiling and stable door
- Flexible ground floor third bedroom/family room with en-suite shower room
- Two spacious first floor double bedrooms with character features
- Exposed beams, flagstone flooring, and period details throughout
- Generous garden with paved terrace, lawn and mature borders
- Peaceful village setting within easy reach of local amenities and transport links



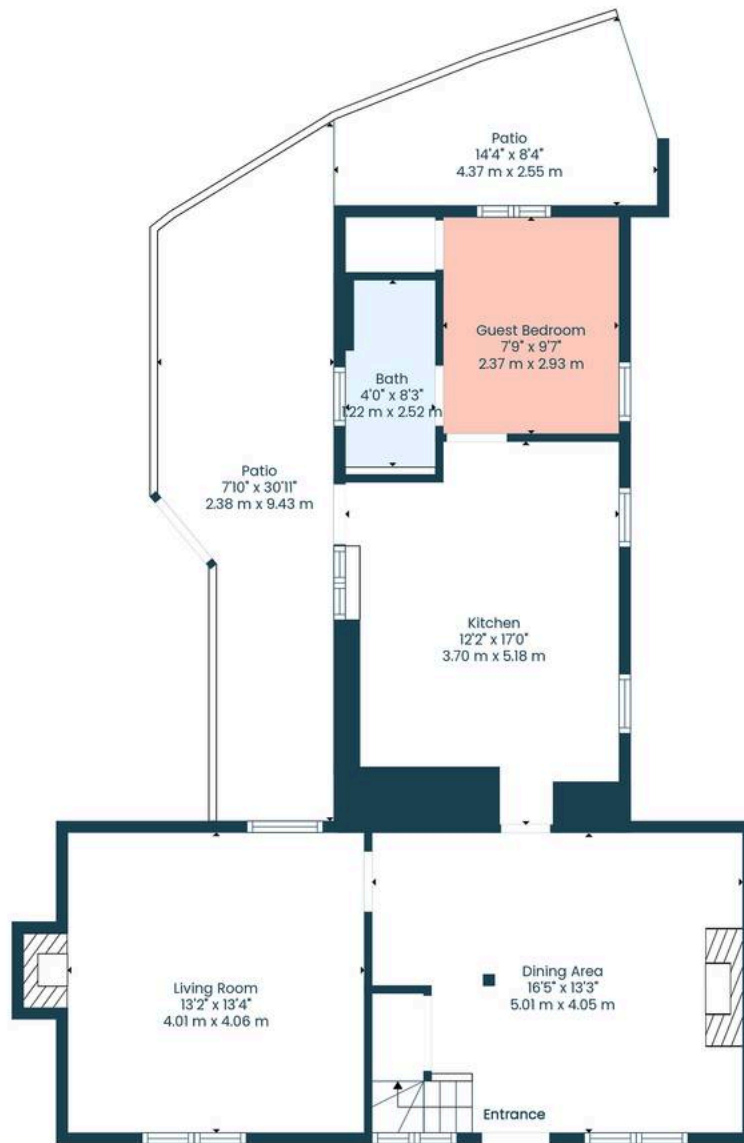












Floor 1



Floor 2



TOTAL: 1131 sq. ft, 105 m2
 FLOOR 1: 732 sq. ft, 68 m2, FLOOR 2: 399 sq. ft, 37 m2
 EXCLUDED AREAS: PATIO: 278 sq. ft, 26 m2, FIREPLACE: 7 sq. ft, 1 m2, OPEN TO BELOW: 8 sq. ft, 1 m2

Dimensions And Layout Are Approximate And Subject To Change Without Notice.





Nested Aylesbury

Tower House, High Street, Aylesbury- HP20 1SQ

01296920675 • amy.lee@nested.com • nested.com/aylesbury