



Norah House, SW17  
£625,000





## Norah House, SW17

Nestled within the highly popular Wimbledon Ground development is this ultramodern and stylish two-bedroom apartment on the sixth floor for sale. Offering a sophisticated urban living experience, meticulously crafted by Galliard Homes, this apartment sets the benchmark in contemporary design and premium amenities.

Upon entering to your right, you are greeted by a spacious open-plan living area, flooded with natural light and showcasing the sleek lines of the interior. The fully integrated designer kitchen features quartz countertops and high-quality appliances, making it a culinary enthusiast's dream.

The two double bedrooms provide ample space for relaxation, each boasting composite engineered wood flooring that combines elegance with practicality. The bath and shower rooms are adorned with white marbled porcelain floor and wall tiling, creating a luxurious spa-like ambience for unwinding after a long day.







## Norah House, SW17

- Ultramodern & Stylish 2 double bedroom apartment
  - Sixth Floor
  - Fully integrated designer kitchen with quartz counter tops
  - Bath and shower rooms finished in white marbled porcelain floor & wall tiling
  - Composite engineered wood flooring
  - Residents Roof Terraces
  - On site concierge
  - Secure bike storage and on-site gym
- Council Tax band: C

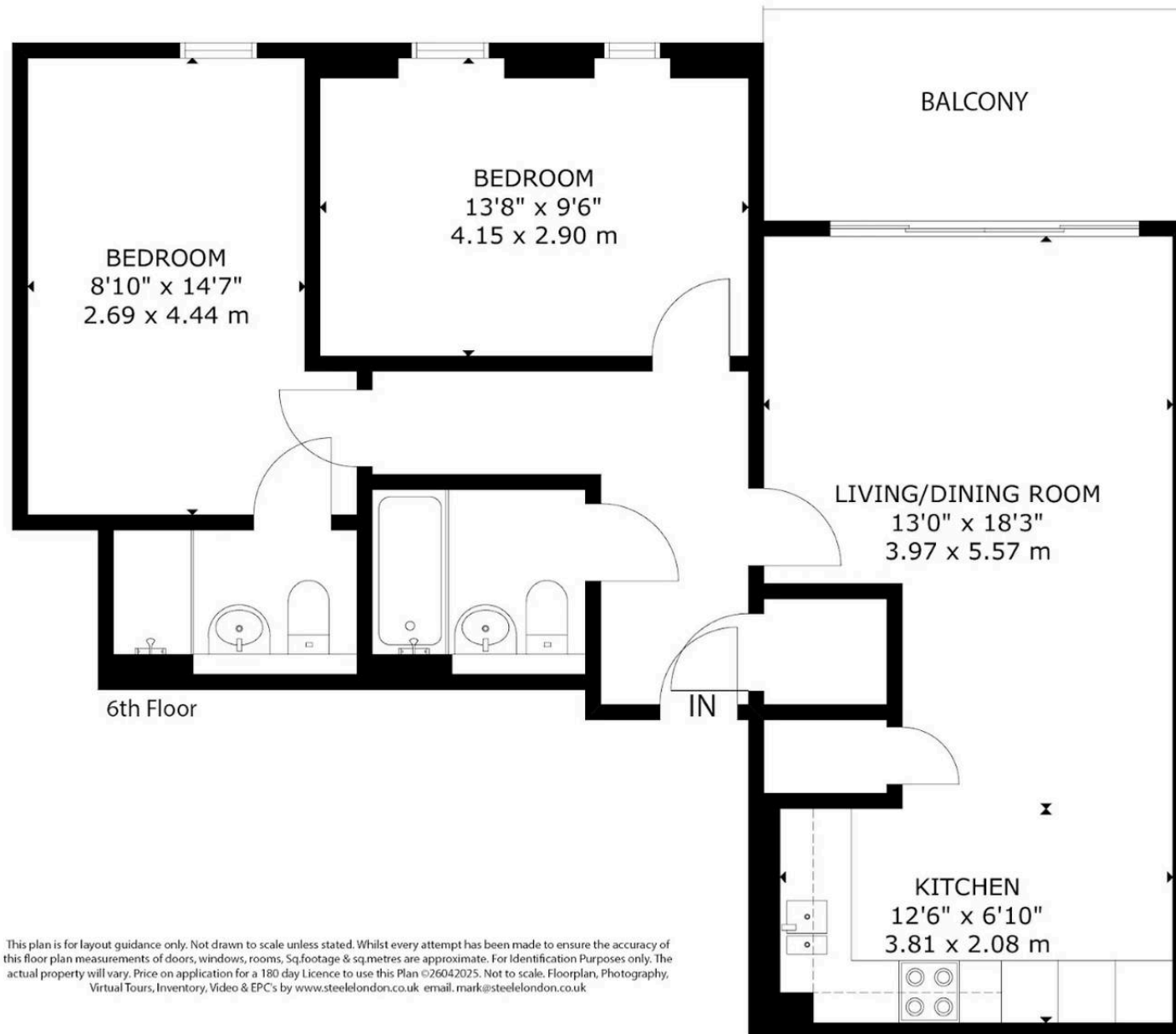
Tenure: Leasehold

EPC Energy Efficiency Rating: B

EPC Environmental Impact Rating: A



NORAH HOUSE SW17  
GROSS INTERNAL AREA  
APPROX TOTAL: 73.sq.m - 785.sq.ft



This plan is for layout guidance only. Not drawn to scale unless stated. Whilst every attempt has been made to ensure the accuracy of this floor plan measurements of doors, windows, rooms, Sq footage & sq metres are approximate. For Identification Purposes only. The actual property will vary. Price on application for a 180 day Licence to use this Plan ©26042025. Not to scale. Floorplan, Photography, Virtual Tours, Inventory, Video & EPC's by [www.steelelondon.co.uk](http://www.steelelondon.co.uk) email: [mark@steelelondon.co.uk](mailto:mark@steelelondon.co.uk)