



Skylark Walk, Chelmsford

In Excess of **£350,000**



Skylark Walk

Chelmsford

A delightful three bedroom mid terraced family home including spacious kitchen/dining room, reception room, bathroom, established garden and garage all ideally positioned within sought-after Tile Kiln, providing easy access in to Chelmsford City Centre.

Council Tax band: C

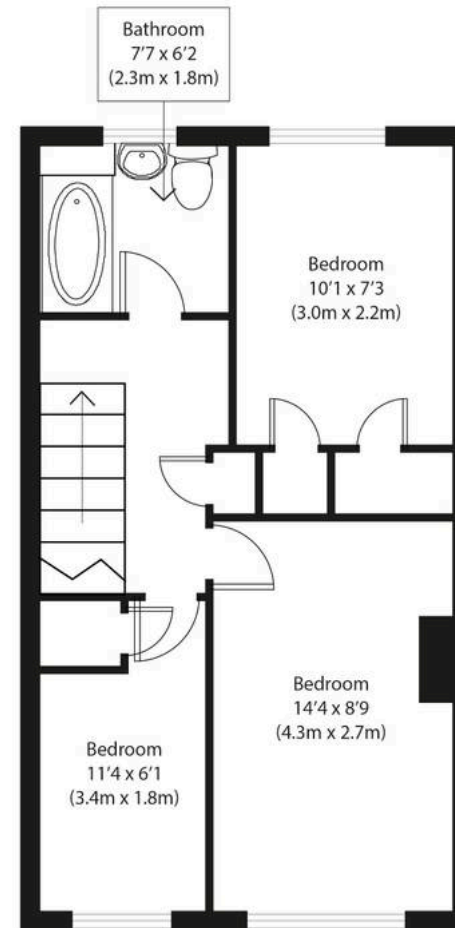
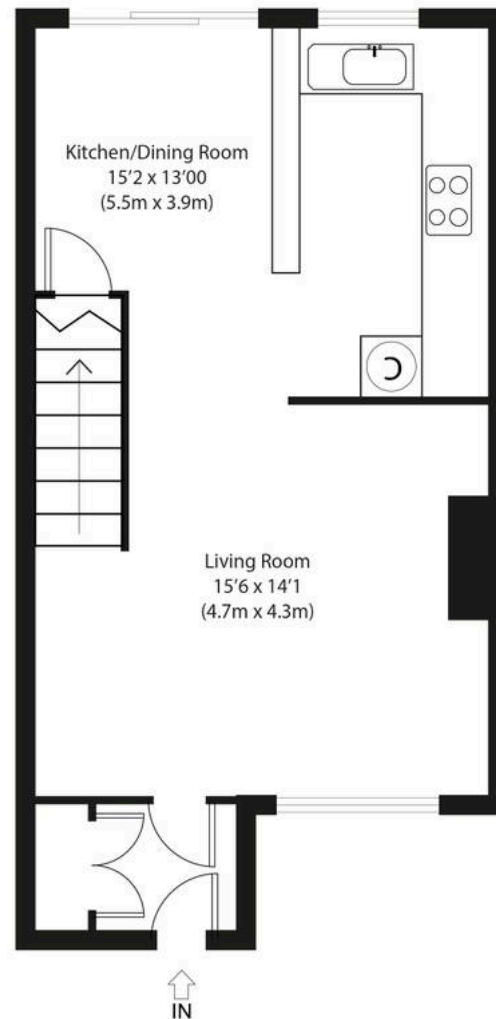
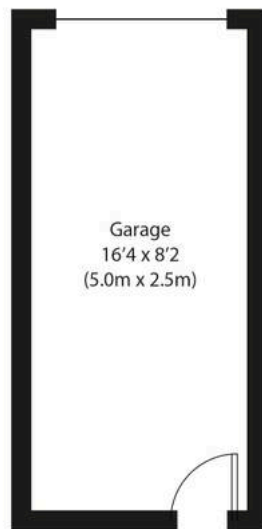
Tenure: Freehold

EPC Energy Efficiency Rating: D

EPC Environmental Impact Rating: D

- Three bedroom mid-terraced house
- Sun filled private rear garden
- Kitchen/dining room
- Comfortable reception room
- Close to highly regarded local schools
- Sought-after residential location
- Close to Lathcotes Farm
- Garage





Approximate Gross Internal Area
Main house 885 sq ft (83 sq m)
Garage 135 sq ft (13 sq m)
Total 1020 sq ft (95 sq m)

Disclaimer: Floorplan measurements are approximate and are for illustrative purposes only. While we do not doubt the floor plan accuracy and completeness, you or your advisors should conduct a careful, independent investigation of the property in respect of monetary valuation. copyright www.photostatusgroup.co.uk



Ground Floor

First Floor



Nested Chelmsford

12-18 Theobalds Road, London - WC1X 8PL

01245 970045 • jack.gundry@nested.com • nested.com/chelmsford