



Hamlet Court Hamlet Close, London

Guide Price £390,000

Hamlet Court Hamlet Close

London, London

Nestled in the heart of a sought-after development, this stunning 2-bedroom apartment offers a combination of modern elegance and comfort for the discerning buyer. Boasting two double bedrooms, a chic bathroom suite, and a contemporary open-plan kitchen, this property is perfect for those seeking both style and practicality. The apartment is flooded with natural light, creating a spacious and inviting atmosphere throughout. The secure gated parking provides peace of mind and convenience for residents.

Conveniently located just a stone's throw away from the station, commuting is a breeze for residents of this property. The secure entryphone system ensures utmost security, while the Juliet balcony offers a tranquil spot to relax and enjoy views of the surrounding area. Whether you're a first-time buyer, a young professional, or an investor seeking a sound opportunity, this apartment ticks all the boxes for a modern urban lifestyle.

The property's exterior complements its interior charm, featuring well-maintained communal areas and delightful green spaces. With manicured gardens and seating areas, residents can unwind in a serene outdoor environment. The secure gated parking not only provides convenience but also ensures safety for vehicles. This well-appointed apartment offers the perfect blend of stylish interiors and tranquil outdoor spaces, making it a desirable choice for those looking for a contemporary urban lifestyle.

Leasehold 99 Years





Hamlet Court Hamlet Close

London, London

Stunning 2-bed apartment in sought-after development. Modern interiors, secure parking, and convenient location near station. Ideal urban living with green spaces and stylish design.

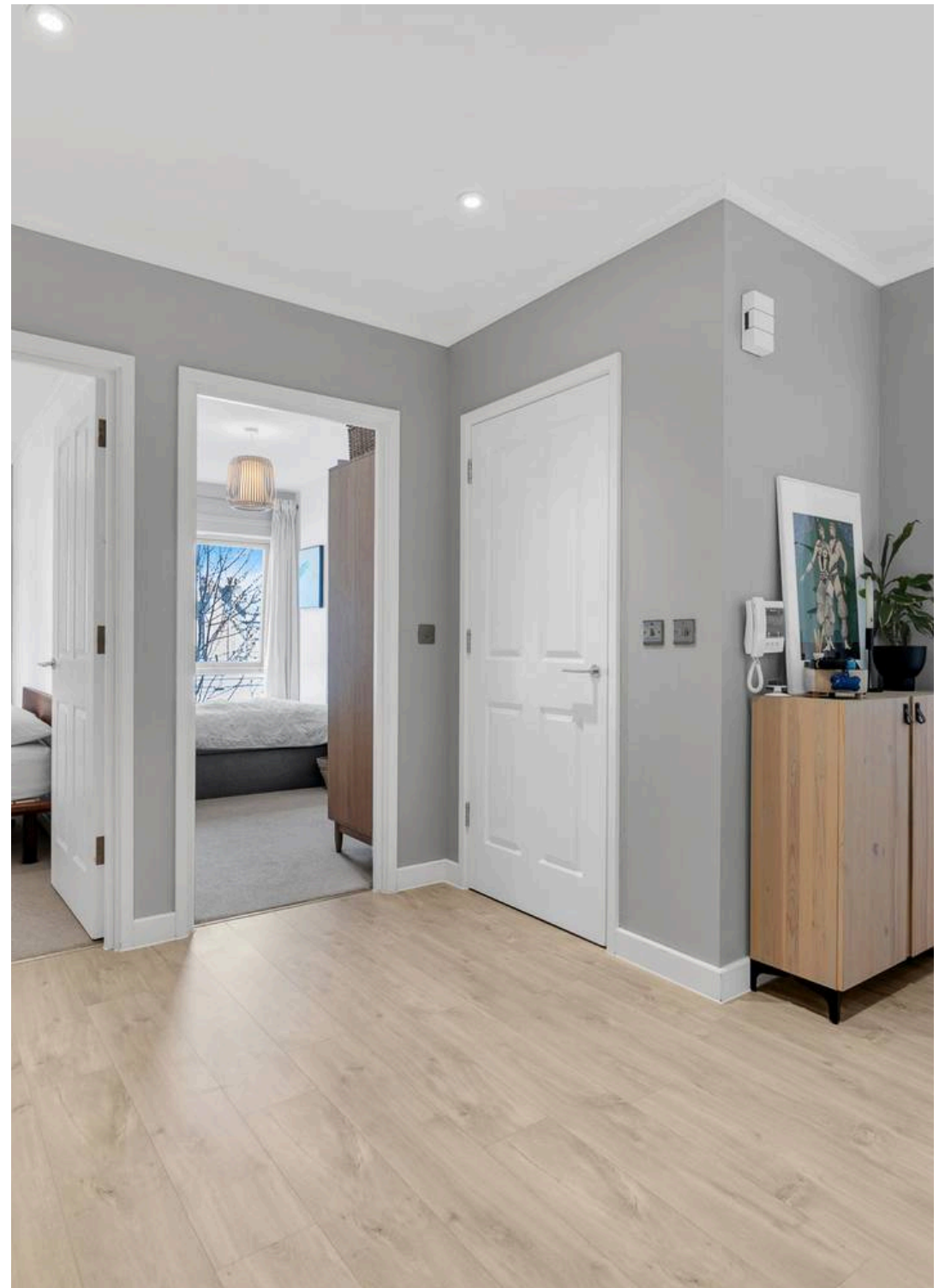
- Two Double Bedroom Apartment
- Chic Bathroom Suite
- Secure Gated Parking
- Sought After Development
- Contemporary Kitchen (open plan)
- Minutes Walk To The Station
- Secure Entryphone System
- Juliet Balcony
- Spacious & Light Throughout



Hamlet Court Hamlet Close

London, London

- Two Double Bedroom Apartment
- Chic Bathroom Suite
- Secure Gated Parking
- Sought After Development
- Contemporary Kitchen (open plan)
- Minutes Walk To The Station
- Secure Entryphone System
- Juliet Balcony
- Spacious & Light Throughout





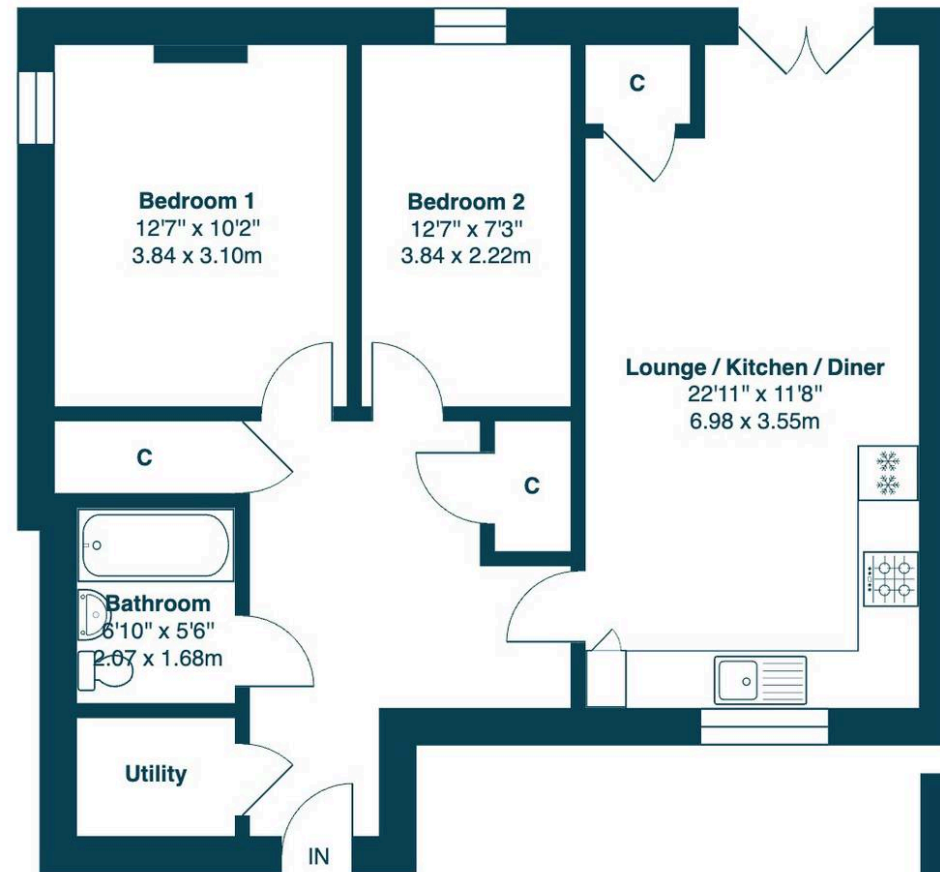






5 Hamlet Court, SE6

Approximate Gross Internal Area = 733 sq ft / 68.1 sq m



First Floor

This plan is for layout guidance only and not drawn to scale unless stated. Window and door openings are approximate. Whilst every care is taken in the preparation of this plan, we would advise interested parties to check all dimensions, shapes and compass bearings prior to making any decisions reliant upon them.
By Homeoutlook.co.uk / Copyright 2025



Nested Bromley

12-18 Theobalds, London - WC1X 8PL

020 3886 2804 • mark.williams@nested.com • nested.com/bromley