



## Orton House, Wimbledon Grounds, SW17

Guide Price £625,000



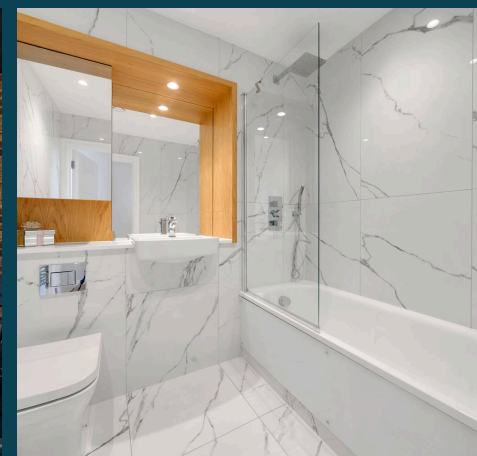
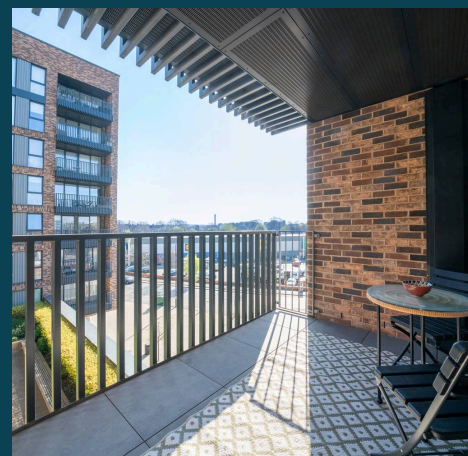
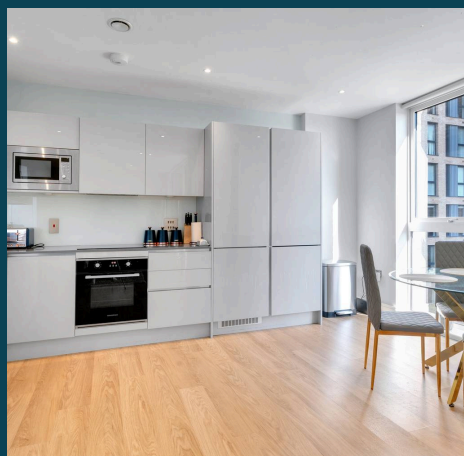
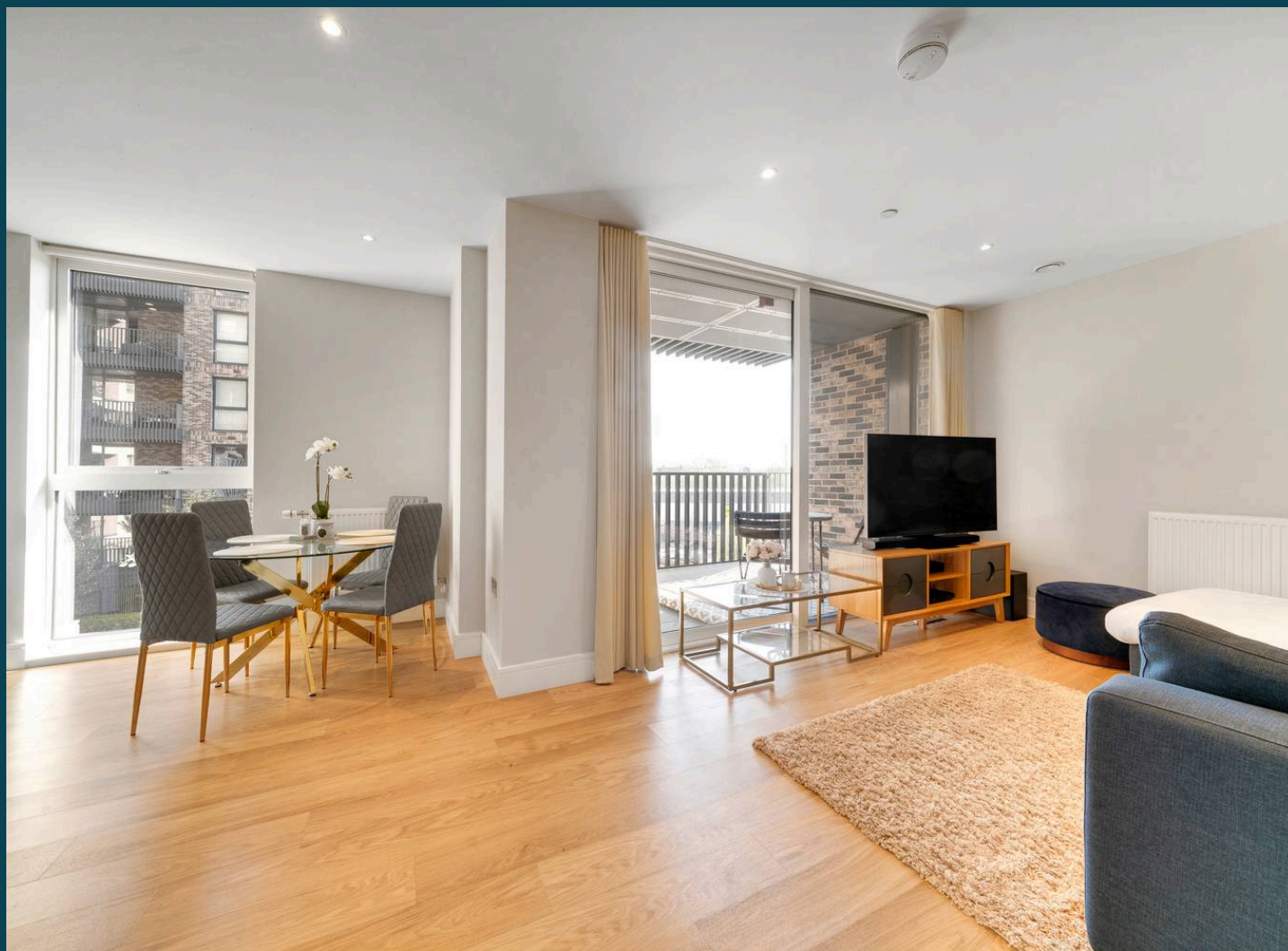


Lawrence- Delaney in partnership with Nested - Tooting presents, this incredibly spacious two-bedroom, third floor apartment for sale. This ultramodern and stylish two-bedroom apartment represents the epitome of contemporary city living. Situated on the third floor, this residence spans in excess of 800 square feet, offering a spacious and luxurious living environment.

Upon entering this exquisite apartment, residents are greeted by a sleek video entryphone system, providing an added layer of security and convenience. The interiors exude sophistication, with composite engineered wood flooring throughout that adds an element of warmth and elegance to the living spaces.

The heart of the home is undoubtedly the fully integrated designer kitchen, complete with quartz countertops and top-of-the-line appliances. This culinary haven is not only a visual delight but also a functional space for culinary experimentation and entertaining guests.

The apartment boasts two double bedrooms, each meticulously designed to offer comfort and tranquillity. The bath and shower rooms are tastefully finished in white marbled porcelain floor and wall tiling, creating a spa-like atmosphere for relaxation and rejuvenation.







Residents of Wimbledon Grounds benefit from a range of amenities, including secure underground parking, a 24-hour concierge service that caters to their every need and ensures a seamless living experience. Additionally, the development features an on-site gym, providing residents with the opportunity to maintain an active lifestyle without ever leaving the confines of their home.

Wimbledon Grounds is yet another thoughtfully designed & Precisely engineered development by Galliard Homes, a statement of architectural brilliance and innovation, combining soaring elevations with distinct, intricate facades, contrasting materials and privacy led balconies and terraces. The entire development is extensively landscaped with communal courtyards, raised gardens, bench-style seating and an undercroft to each dividing block - enabling a walk-through path connecting each of the four central courtyards. Wimbledon Grounds is the creation of a brand new community in a vibrant new environment - offering luxurious living in a green tranquil setting. Located almost equidistant from both Tooting Broadway Underground and Earlsfield providing easy access to the City.

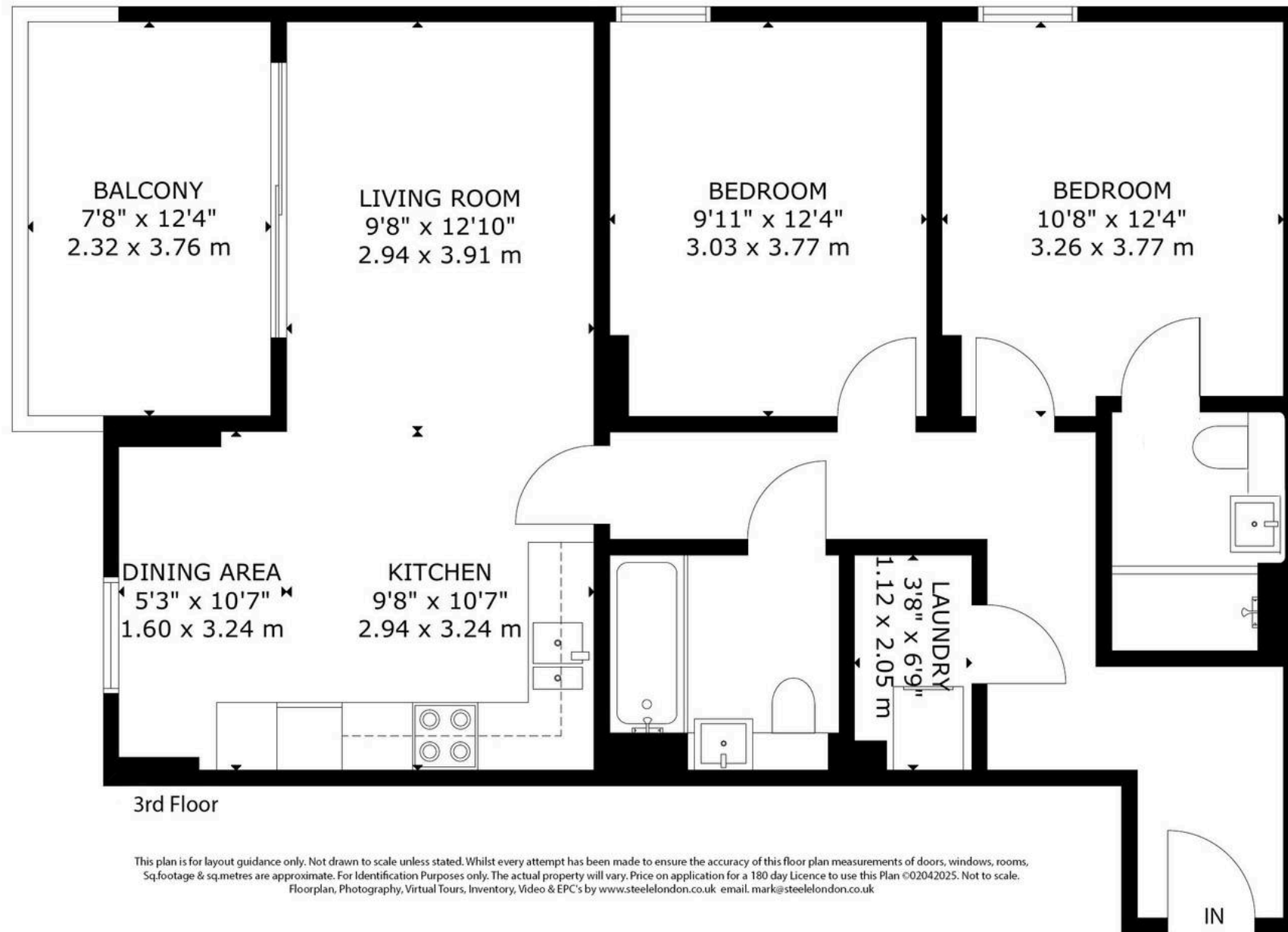
In conclusion, this exceptional apartment offers not only a luxurious living space but also a lifestyle of convenience and elegance. With its modern amenities, stylish interiors, and prime location, this residence presents a rare opportunity to experience contemporary city living at its finest.

- Ultramodern & Stylish 2 double bedroom apartment
- Offering in excess of 800 square feet of accomdation
- Third floor
- Video entryphone system
- Composite engineered wood flooring
- Fully integrated designer kitchen with quartz counter tops
- Bath and shower rooms finished in white marbled porcelain floor & wall tiling
- Wimbledon Ground is yet another thoughtfully designed & Precisely engineered development by Galliard Homes









This plan is for layout guidance only. Not drawn to scale unless stated. Whilst every attempt has been made to ensure the accuracy of this floor plan measurements of doors, windows, rooms, Sq.footage & sq.metres are approximate. For Identification Purposes only. The actual property will vary. Price on application for a 180 day Licence to use this Plan ©02042025. Not to scale. Floorplan, Photography, Virtual Tours, Inventory, Video & EPC's by [www.steelelondon.co.uk](http://www.steelelondon.co.uk) email: [mark@steelelondon.co.uk](mailto:mark@steelelondon.co.uk)