



Bromells Road, Clapham Old Town, SW4

Guide Price **£1,500,000**

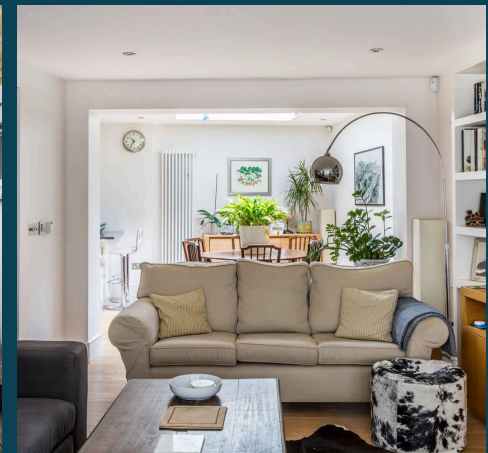
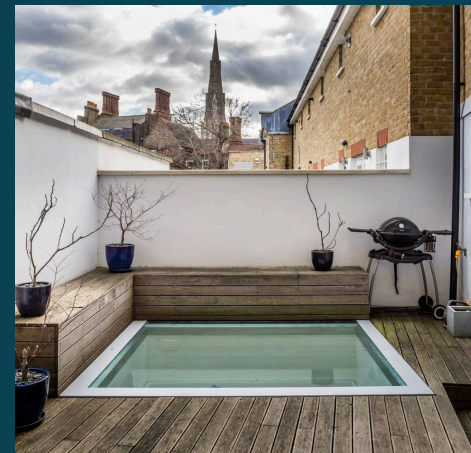
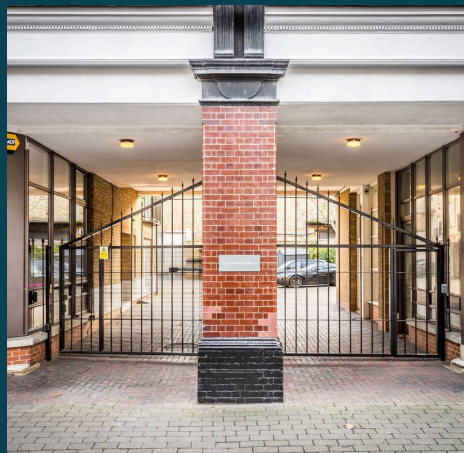


Bromells Road, Clapham Old Town, SW4

Lawrence-Delaney in partnership with Nested – Tooting offers a luxurious lifestyle amidst the vibrant neighbourhood of Clapham, this exquisite 3-bedroom mid-terraced house for sale, is nestled within a gated mews development, boasting elegance and privacy in equal measure. From the moment you set foot into this exceptional residence, a sense of opulence envelops you, setting the stage for a sophisticated living experience.

Ensuring utmost security and peace of mind, the property is equipped with an advanced ADT security system, allowing you to relax and unwind in the comfort of your stylish surroundings. Ascend to the upper levels, where pure indulgence awaits in the form of a private roof terrace, complete with walk-on glass flooring—an ideal spot for al-fresco dining or soaking in the breathtaking views of the surrounding cityscape.

The interior of this home is a showcase of contemporary design and impeccable craftsmanship, with an open-plan reception/kitchen area serving as the heart of the home. Boasting sleek finishes and state-of-the-art appliances, this space is tailor-made for both relaxing and entertaining, providing a seamless flow that is as functional as it is stylish.





Situated just moments from the picturesque Clapham Common, residents have the privilege of enjoying the tranquil green spaces and recreational amenities that this iconic park has to offer. Whether it's a leisurely stroll, a morning jog, or a picnic with loved ones, the proximity to this urban oasis allows for endless possibilities for outdoor enjoyment.

For those who crave the convenience of city living, this property is ideally located within close proximity to Clapham underground station, ensuring effortless connectivity to the rest of London and beyond. With an array of shops, restaurants, and cultural attractions just a stone's throw away, residents are perfectly positioned to experience the best that this dynamic neighbourhood has to offer.

In summary, this stunning property represents a rare opportunity to own a slice of luxury in one of London's most sought-after locations. With its impeccable design, prime location, and wealth of amenities, this home is sure to capture the hearts of those who appreciate the finer things in life.

Gated Mews development

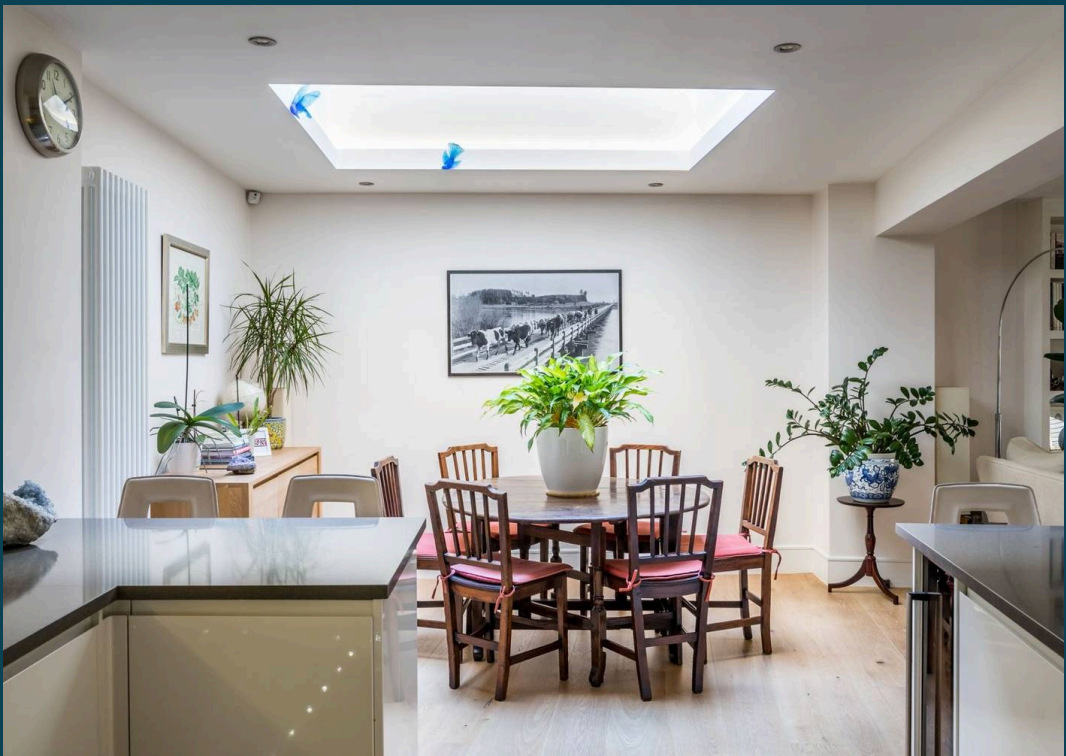
Private Roof Terrace With Walk On Glass

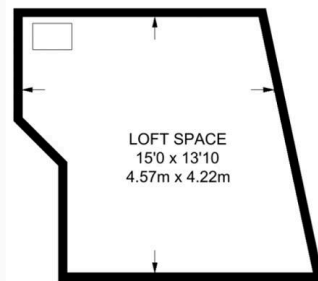
ADT Security System

Open-plan reception/kitchen

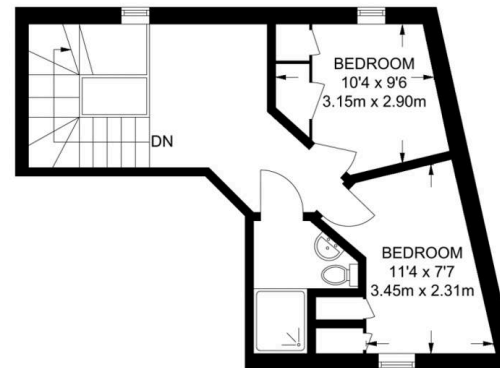
Moments from Clapham Common

Within close proximity to Clapham Underground Station

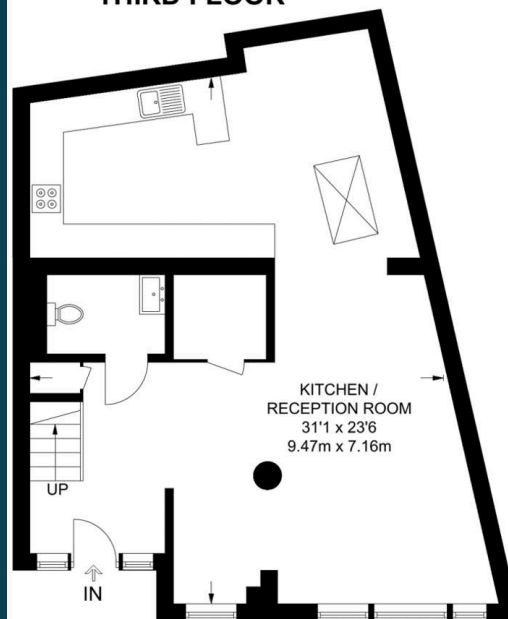




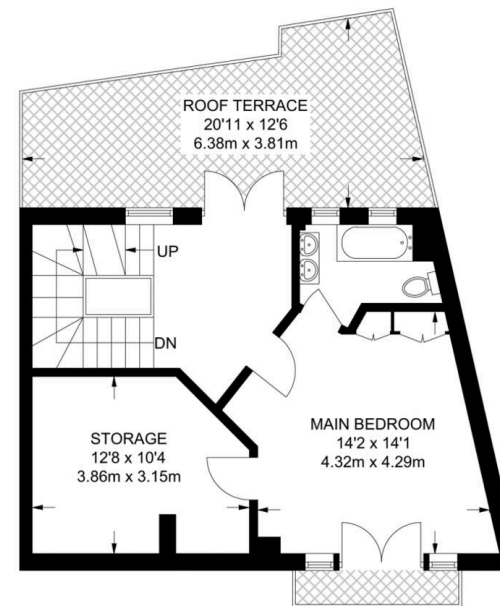
THIRD FLOOR



SECOND FLOOR



GROUND FLOOR



FIRST FLOOR

APPROXIMATE GROSS INTERNAL AREA
1505 SQ FT / 139.8 SQ M
(EXCLUDING LOFT SPACE)

This plan has been drawn for illustrative and identification purposes only.