



**Brockenhurst Way, SW16**

Offers in Region of **£500,000**

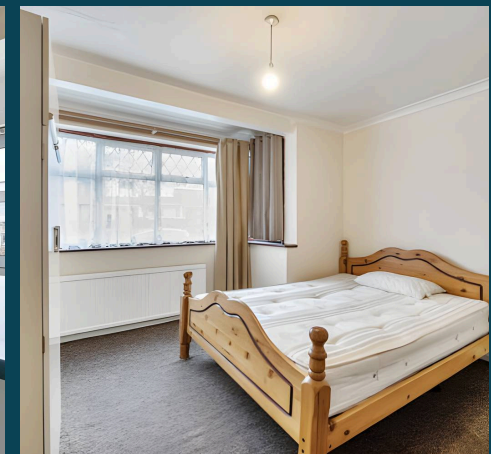
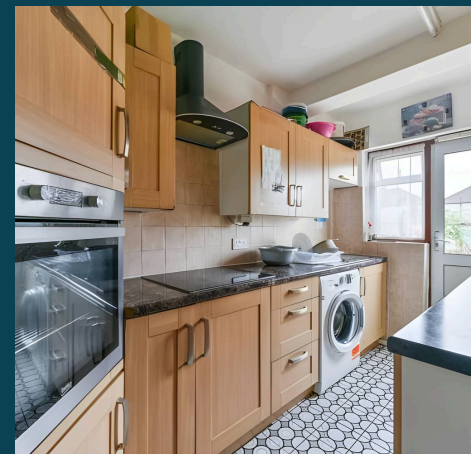


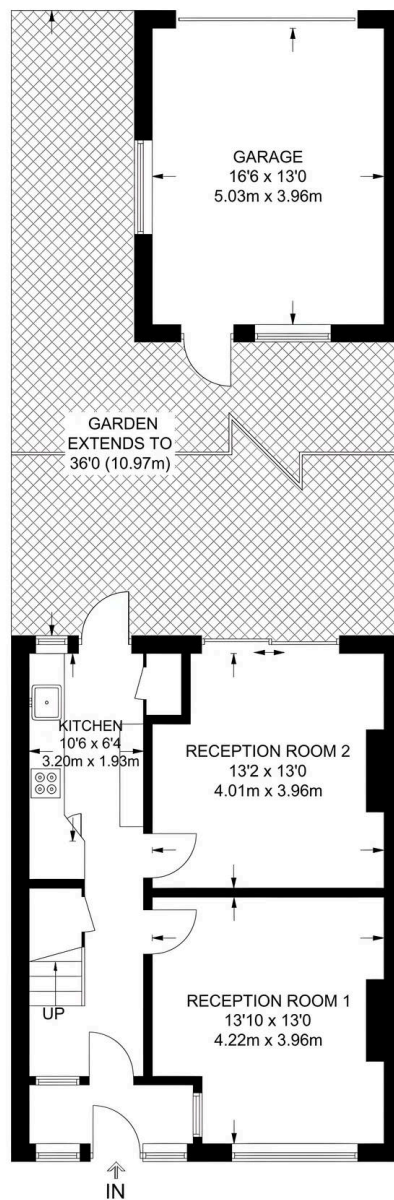
Lawrence-Delaney in partnership with Nested offers this charming and spacious 3-bedroom terraced house for sale. A fantastic opportunity for those seeking a property with potential and scope to add value.

This well-proportioned home presents itself as an exciting opportunity to add value and extend (STPP) for those looking for a versatile canvas for customisation. Offered with no onward chain and benefits from a large garage to the rear, perfect for a home office/gym. While modernisation is required throughout, the property's layout and structure provide a solid foundation for a transformation.

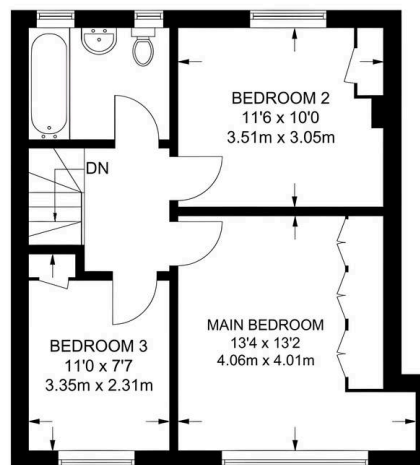
Stepping into the outside space of this property, one is greeted by a generously sized garden that offers a blank canvas for landscaping enthusiasts. The spacious garden not only provides ample room for outdoor entertaining and relaxation but also presents endless possibilities for the green-fingered enthusiast.

Conveniently positioned on a residential street, within close proximity to both a wide range of local amenities and Streatham Common or Norbury overground stations, which provides direct access to Central London via Clapham Junction, London Bridge and London Victoria. The popular Woodmansterne and Granton schools are also nearby.





**GROUND FLOOR**  
**550 SQ FT / 51.1 SQ M**



**FIRST FLOOR**  
**475 SQ FT / 44.1 SQ M**

**APPROXIMATE GROSS INTERNAL AREA = 1025 SQ FT / 95.2 SQ M**  
**GARAGE = 216 SQ FT / 20.1 SQ M**  
**TOTAL = 1241 SQ FT / 115.3 SQ M**

This plan has been drawn for illustrative and identification purposes only.