



Searle Crescent, Broomfield

£66,250



# Searle Crescent

Broomfield, Chelmsford

Shared ownership property being sold at 25% share with a full value of £265,000. A modern two double bedroom ground floor flat including spacious open-plan kitchen/reception room, bathroom and an allocated parking space all conveniently positioned within sought-after Broomfield providing easy access in to Chelmsford City centre.

Important information:

Council Tax Band - C

Services - We understand that mains water, drainage, gas and electricity are connected to the property.

Tenure - Leasehold 125 years from 1st April 2018.

EPC rating - B.

Scheme - Shared ownership.

Percentage - 25%

Price £66,250 of the 100% value £265,000

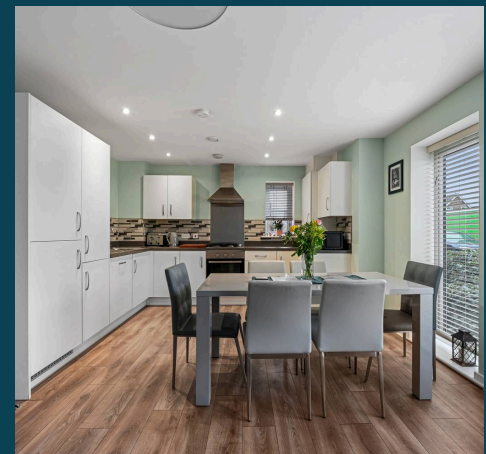
Charges Payable - The current monthly charges payable to Home Group from 1st April 2024 are £798.94 and are broken down as follows:

Rent - £622.08

Management charge - £5.75

Service charge - £171.11 (These charges are reviewed annually on 1st April).

- Shared ownership
- 25% of the 100% market value £265,000 (£66,250)
- Staircasing (potentially up to 100%) available
- Two double bedroom ground floor flat







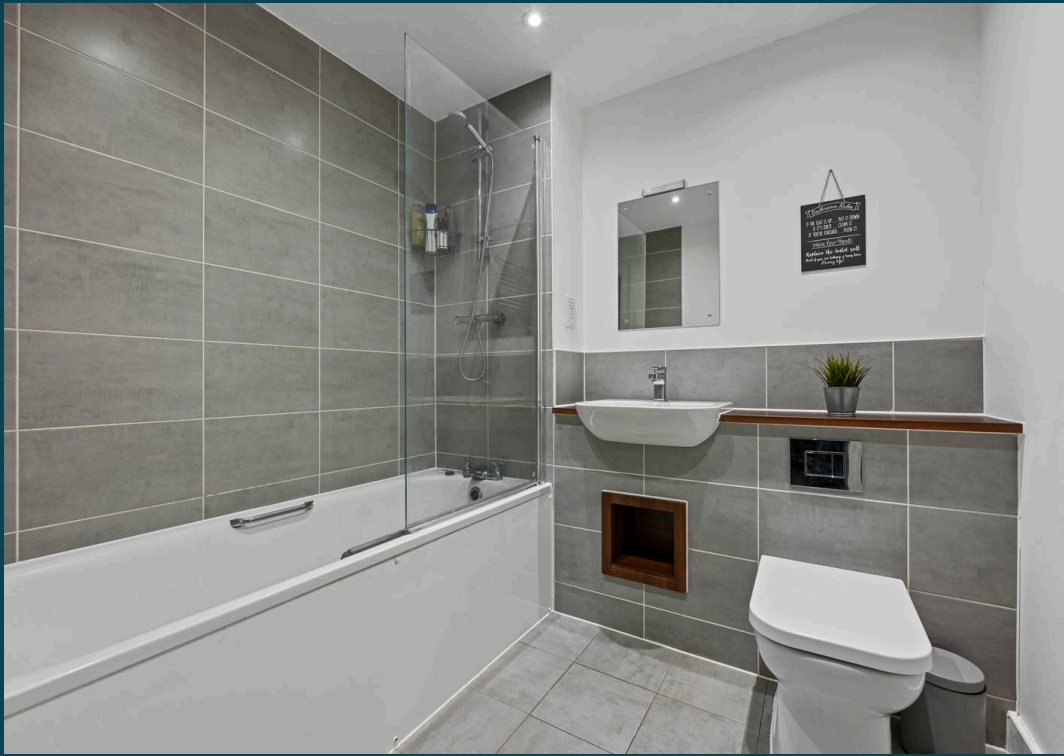
## Searle Crescent

Broomfield, Chelmsford

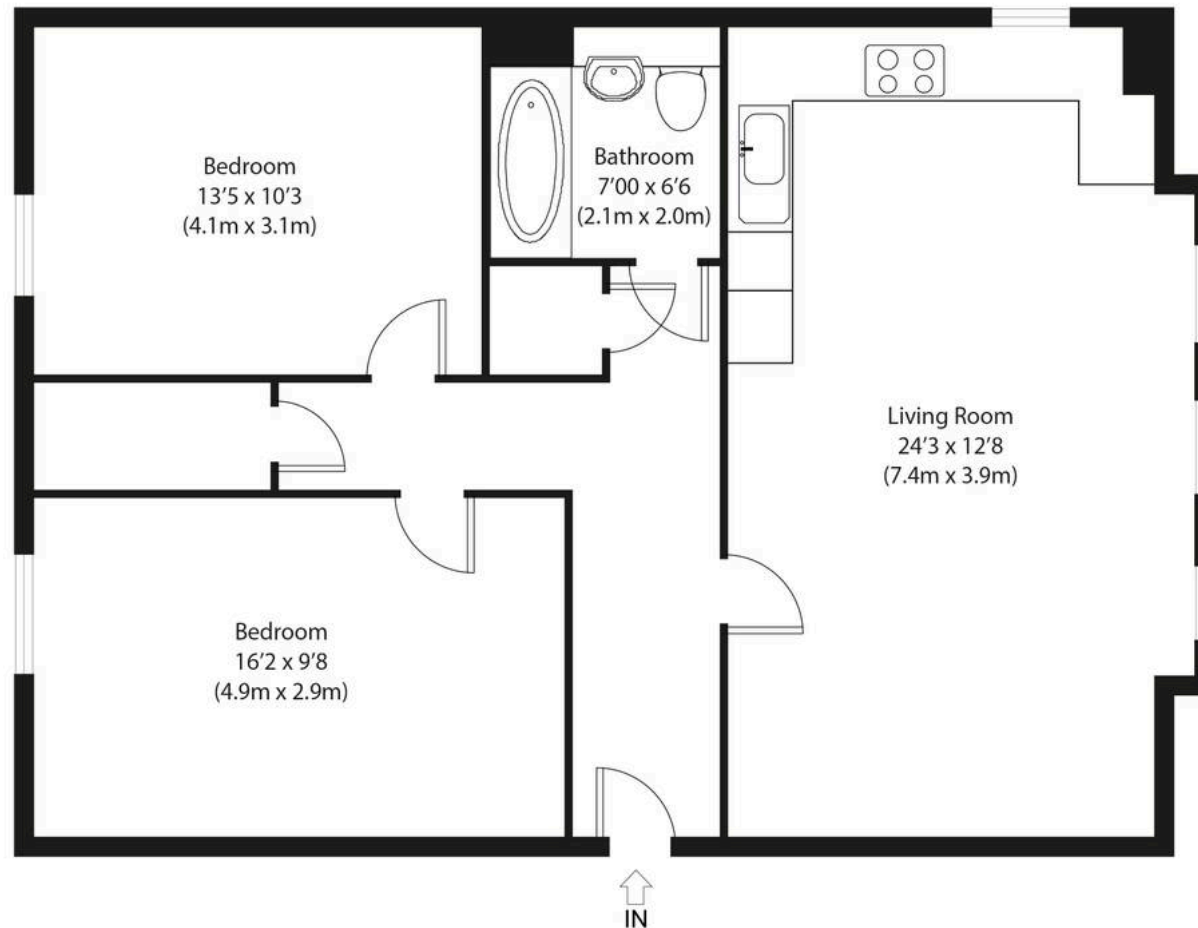
Shared ownership property being sold at 25% share with a full value of £265,000. A modern two double bedroom ground floor flat including spacious open-plan kitchen/reception room, bathroom and an allocated parking space all conveniently positioned within sought-after Broomfield providing easy access in to Chelmsford City centre.

- Shared ownership
- 25% of the 100% market value £265,000 (£66,250)
- Staircasing (potentially up to 100%) available
- Two double bedroom ground floor flat
- Stylishly decorated throughout
- Impressive open plan kitchen/reception room
- Contemporary bathroom
- Allocated parking space
- Excellent transport links
- Generous storage









Ground Floor

Approximate Gross Internal Area  
760 sq ft (71 sq m)

Disclaimer: Floorplan measurements are approximate and are for illustrative purposes only. While we do not doubt the floor plan accuracy and completeness, you or your advisors should conduct a careful, independent investigation of the property in respect of monetary valuation.  
copyright www.photohausgroup.co.uk

