



Flat 4, 96 Bromfelde Road, London

Guide Price £295,000



Flat 4

96 Bromfelde Road, London

Stunning designer studio apartment in Clapham. Upgraded to highest standard by acclaimed architects in 2016. High-spec kitchen, fold-away bed, ample storage, walk-in shower, underfloor heating, and large windows. Prime location, close to amenities and transport links. Perfect for first-time buyers, professionals, or investors. Early viewing recommended.

Council Tax band: B

Tenure: Share of Freehold

EPC Energy Efficiency Rating: C

EPC Environmental Impact Rating: C

- Internationally acclaimed architectural design
- High-Specification Fitted Kitchen
- Fold-Away Bed in Wardrobe
- Underfloor Heating
- Polished Walls
- Large Sash Windows
- Faces South East



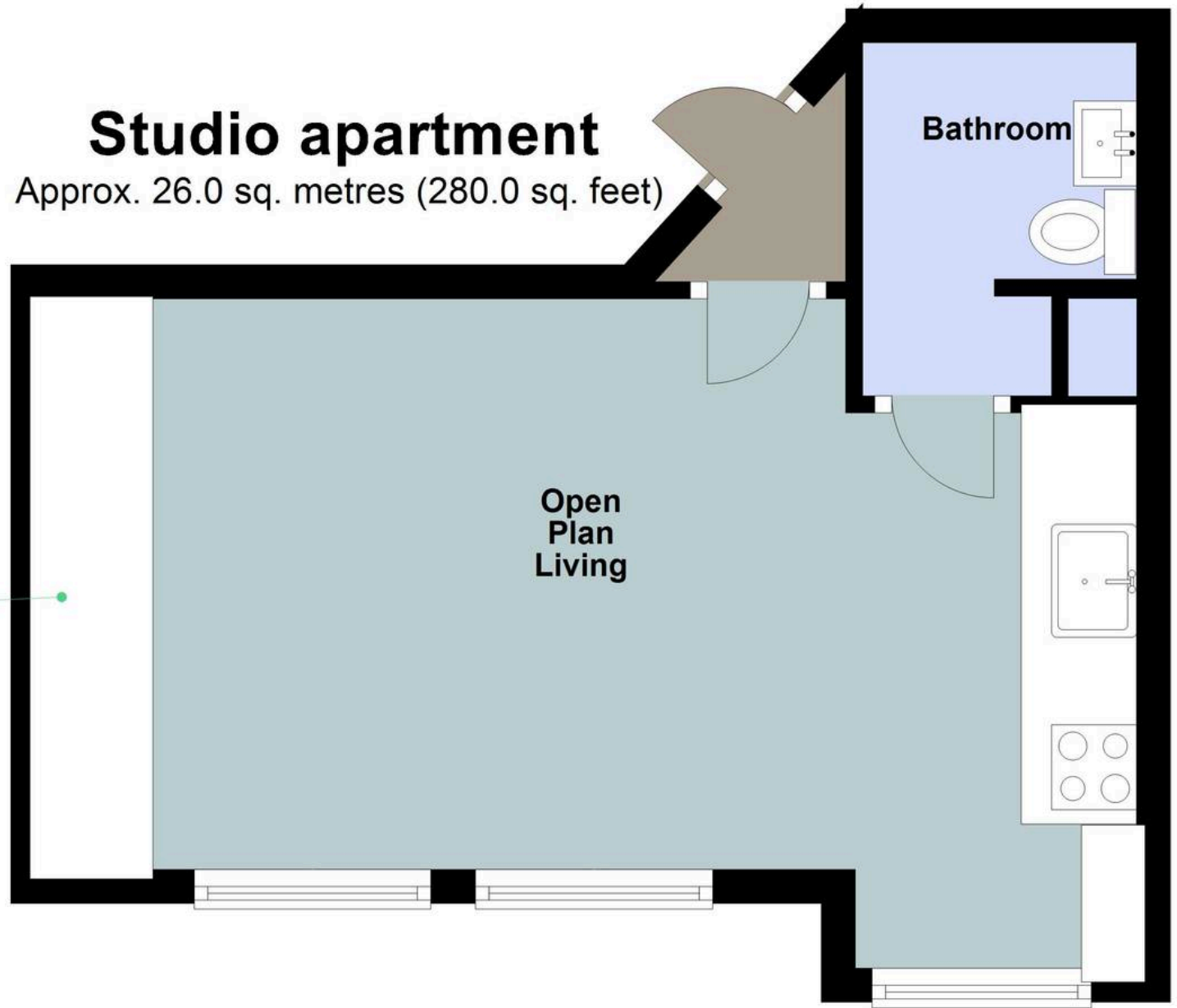




Studio apartment

Approx. 26.0 sq. metres (280.0 sq. feet)

High end built in wardrobe
& storage & fold away
double bed



Total area: approx. 26.0 sq. metres (280.0 sq. feet)



Nested Clapham

12-18 Theobalds Road, London - WC1X 8PL

02038580695 • kash.ijaz@nested.com • nested.com/clapham