



14 Dormer Close, Aylesbury

In Excess of £360,000



14 Dormer Close

Aylesbury, Aylesbury

Nestled in the sought-after community of The Willows, this beautifully presented 3/4-bedroom family home offers versatile and stylish living spaces.

Council Tax band: C / £2032 pa

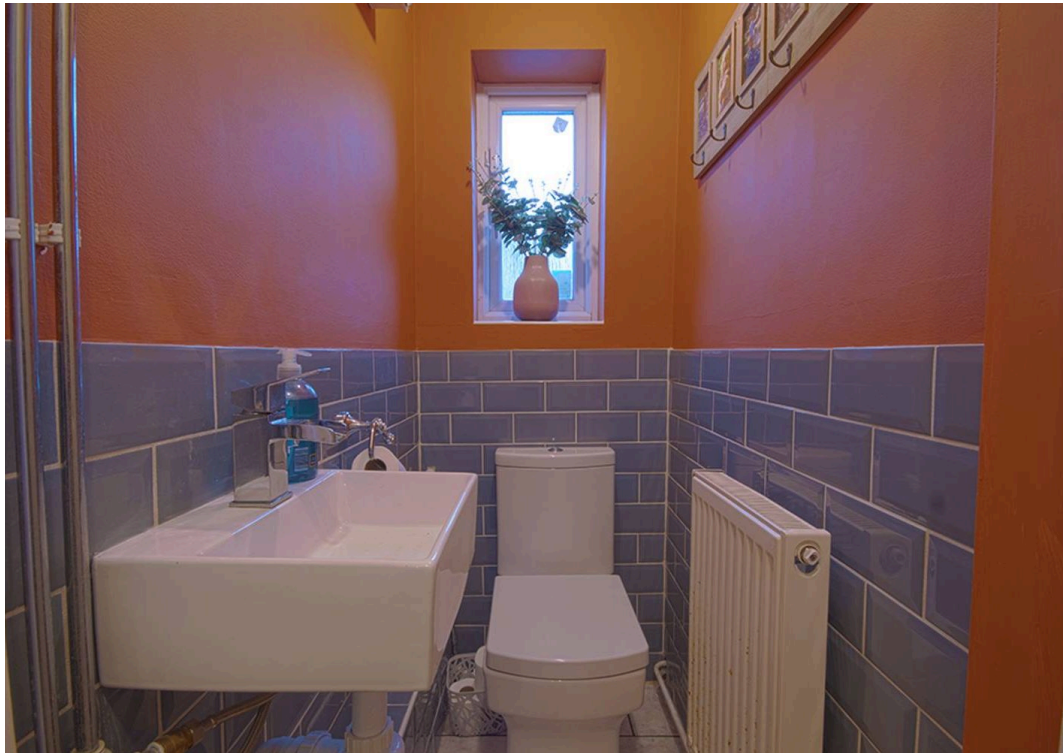
Tenure: Freehold

EPC: C

Driveway Parking: 2 cars

- 3/4 BEDROOMS
- SEPERATE LOUNGE & DINING AREA
- NEWLY FITTED BATHROOMS
- DRIVEWAY PARKING
- GARDEN WITH LAWN & PATIO
- WALKING DISTANCE TO AYLESBURY TRAIN STATION
- SMART HEATING SYSTEM
- GROUND FLOOR WC







Ground Floor



First Floor



Total Size: 960 sq ft approx.

Disclaimer: Floor plans are provided for general guidance only and are not to scale. All measurements and areas are approximate. While every care has been taken in the preparation of this floor plan, potential buyers should not rely solely on this information, and are advised to verify dimensions, layout, and specifications personally. Any furnishings and features depicted are for illustration purposes only and may not represent the current state of the property.



Nested Aylesbury

12-18 Theobalds Road, London - WC1X 8PL

01296920675 • amy.lee@nested.com • nested.com/aylesbury