



27 Victoria Terrace, Lanchester

Offers in Region of £215,000

27 Victoria Terrace

Lanchester, Durham

This charming mid-terrace property offers flexible family living, deceptively spacious and thoughtfully laid out over three floors. Located on the highly desirable Victoria Terrace, close to the highly rated Lanchester EP Primary School, it combines modern comforts with classic features, having been fully renovated in recent years.

Ground Floor: Stylish and Functional

Step through the entrance hallway, complete with a handy understairs storage cupboard, and into the dining room, which features a cosy wood-burning stove. The modern kitchen flows into a utility space and a convenient ground-floor WC. A rear hallway provides access to the lounge, a warm and inviting space with a feature fireplace, stairs to the upper floors, and a door that leads out to the front garden.

First Floor: Comfortable Family Living

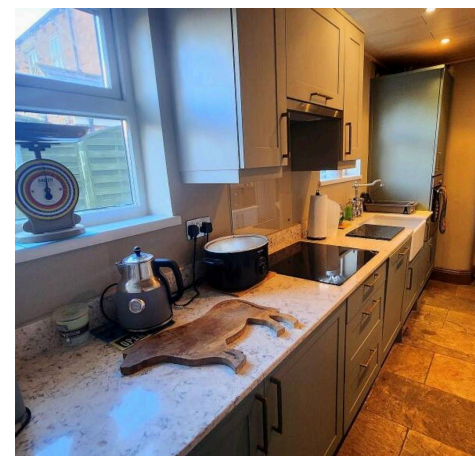
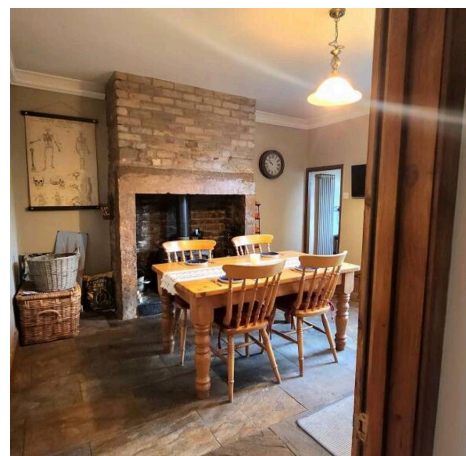
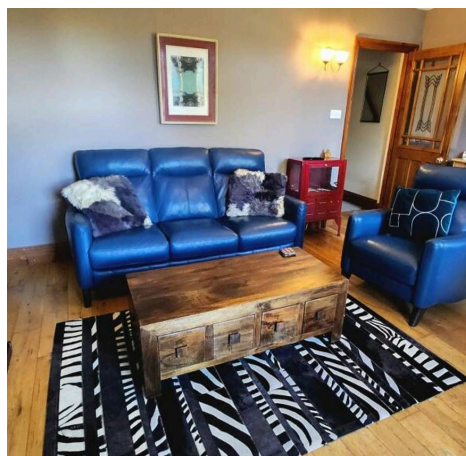
On the first floor, you will find two double bedrooms, providing plenty of space for the family. The family bathroom, accessible through the rear bedroom, offers a modern and practical space for everyday living.

Second Floor: Additional Bedroom/Office and Storage

The second floor features a landing area leading to an additional double bedroom, complete with eaves storage, making this the perfect retreat for older children or guests.

Outdoor Space

The enclosed front garden opens onto a communal





27 Victoria Terrace

Lanchester, Durham

This charming mid-terrace property offers flexible family living, deceptively spacious and thoughtfully laid out over three floors. Located on the...

- Wood Burning Stove & Feature Fireplace
- Spacious Living Across Three Floors
- Driveway & Enclosed Front Garden
- Two Generous Reception Rooms
- Fully Renovated with Modern Amenities
- Popular Village Location with Excellent Amenities



27 Victoria Terrace

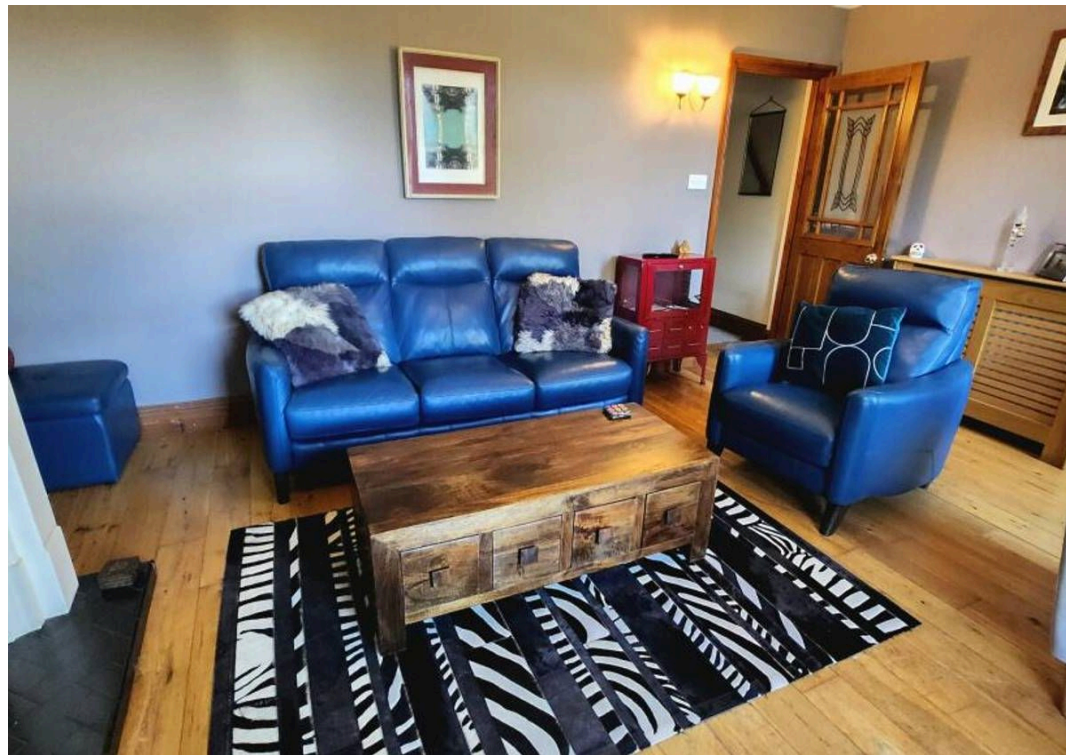
Lanchester, Durham

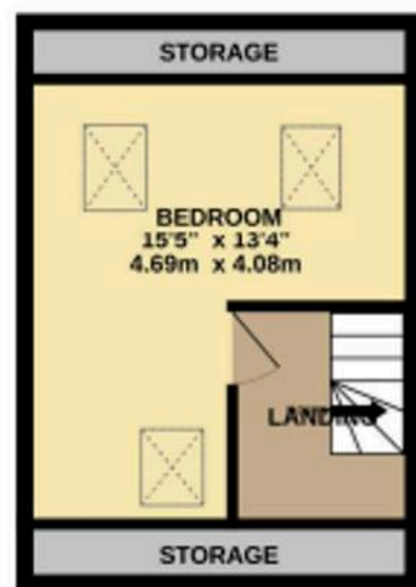
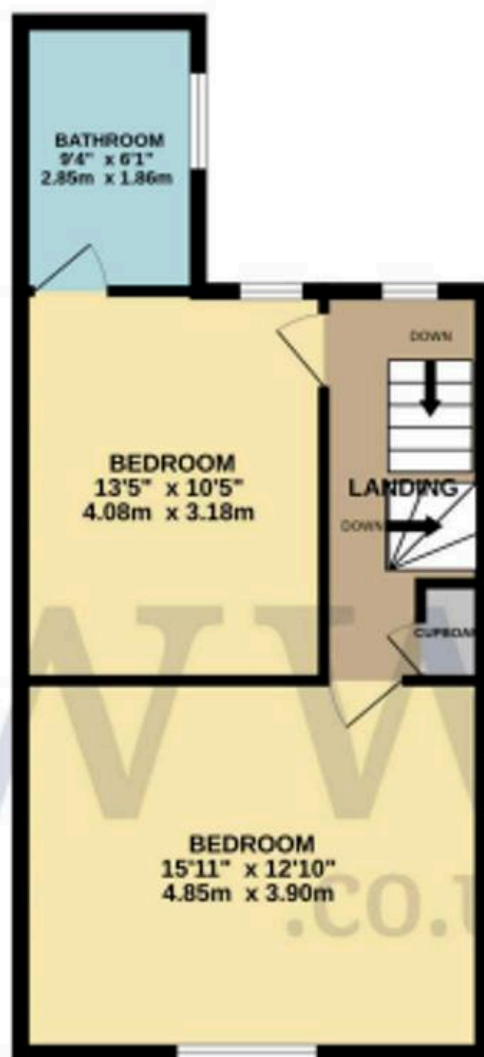
- Wood Burning Stove & Feature Fireplace
- Spacious Living Across Three Floors
- Driveway & Enclosed Front Garden
- Two Generous Reception Rooms
- Fully Renovated with Modern Amenities
- Popular Village Location with Excellent Amenities













Bourne & Co (in partnership with Nested)

12-18 Theobalds Road, London - WC1X 8PL

01207529900 • info@bournenco.com • <http://www.bournenco.com>