



Marlborough Road, Chelmsford

In Excess of **£590,000**



Marlborough Road

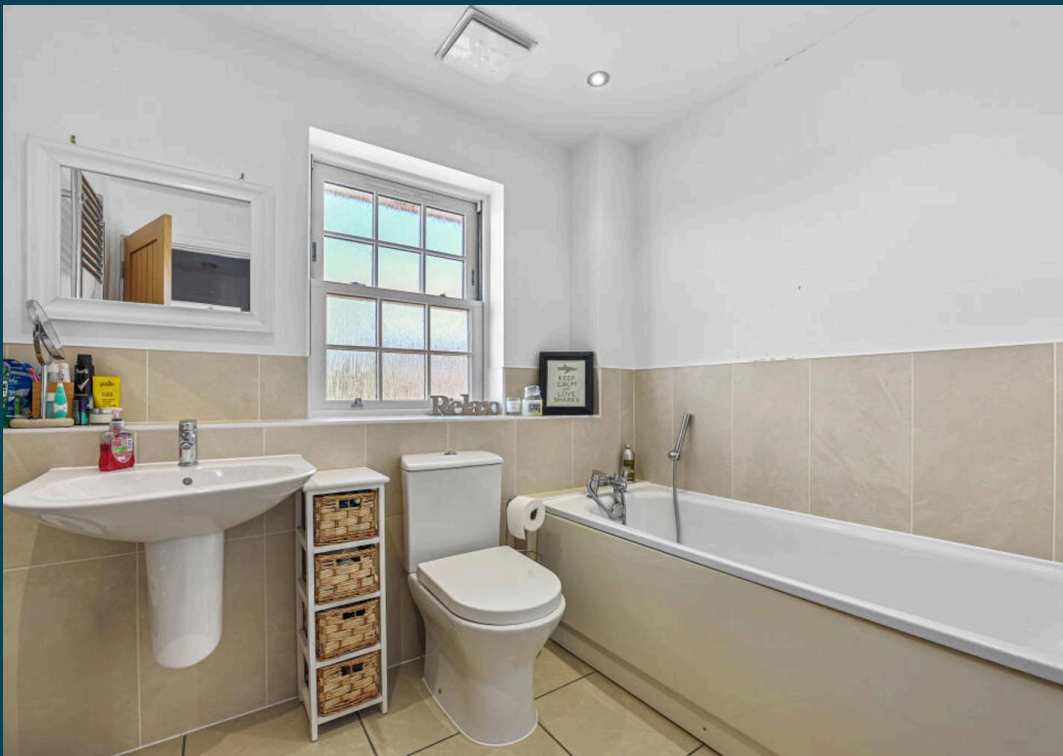
Chelmsford

A fabulous modern four double bedroom town house offering kitchen/dining room, spacious first floor reception room, two stylish bathrooms, attractive garden and car port, all conveniently positioned within highly sought-after Old Moulsham providing an excellent family home
Council Tax band: E

Tenure: Freehold

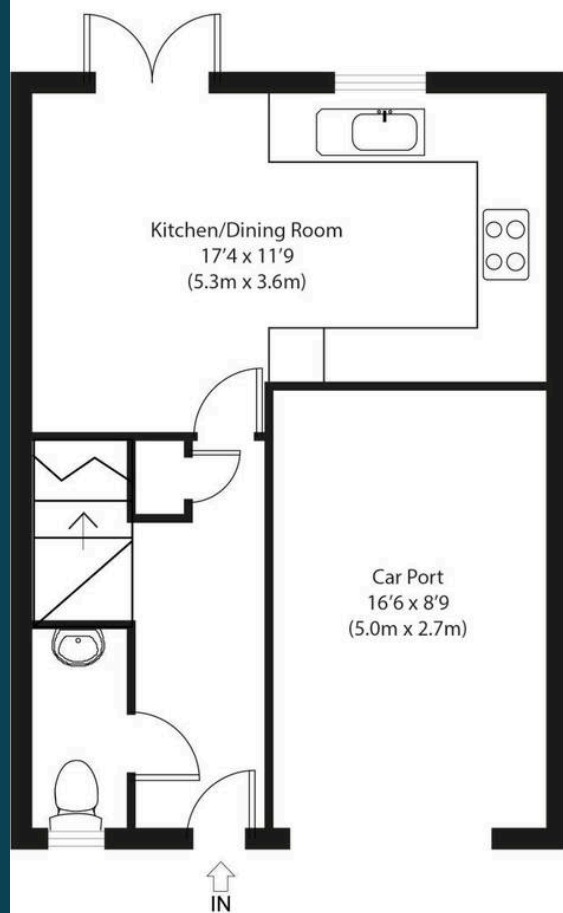
EPC Rating: B

- Downstairs cloakroom
- Spacious kitchen/dining room
- Impressive first floor reception room
- Generous sized garden
- Two attractive bathrooms
- Four double bedroom modern terraced town house
- Three floors spanning just under 1400 sq ft. (including car port)
- Car port providing off street parking

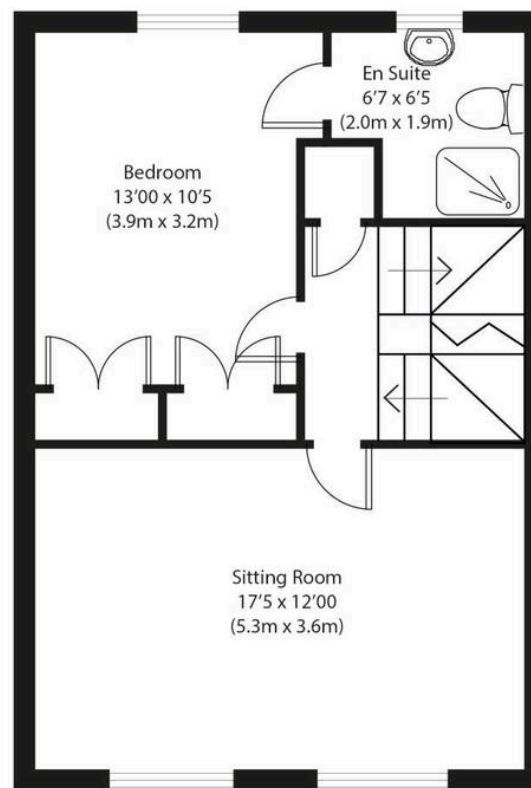




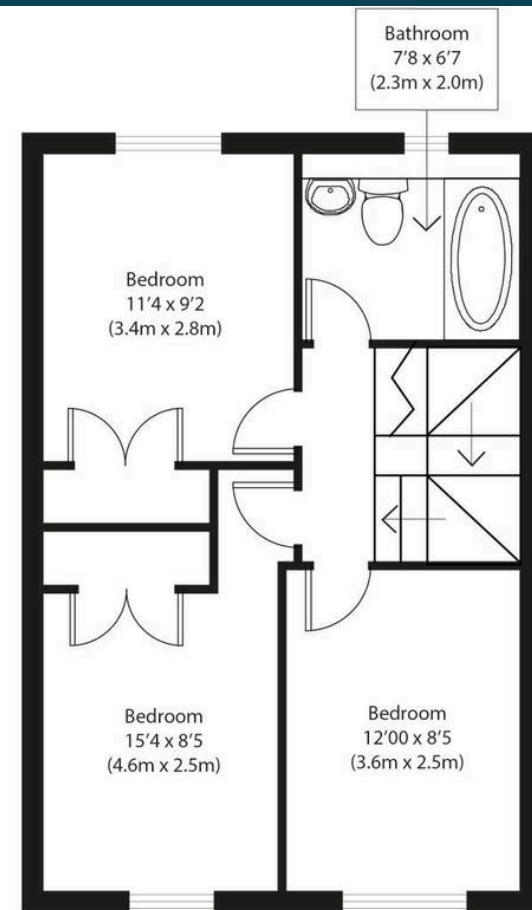




Ground Floor



First Floor



Second Floor

Approximate Gross Internal Area
Main House 1235 sq ft (115 sq m)
Car Port 150 sq ft (14 sq m)
Total 1385 sq ft (129 sq m)

Disclaimer: Floorplan measurements are approximate and are for illustrative purposes only. While we do not doubt the floor plan accuracy and completeness, you or your advisors should conduct a careful, independent investigation of the property in respect of monetary valuation. copyright www.phototahausgroup.co.uk



Nested Chelmsford

12-18 Theobalds Road, London – WC1X 8PL

01245 970045 • jack.gundry@nested.com • nested.com/chelmsford