



First Avenue, CM1

£625,000

A delightful semi-detached family home including two reception rooms, separate kitchen, garden room/study, garage, private driveway parking and fabulous garden in excess of 100 ft. in depth all idyllically positioned within walking distance of Chelmsford City Centre.

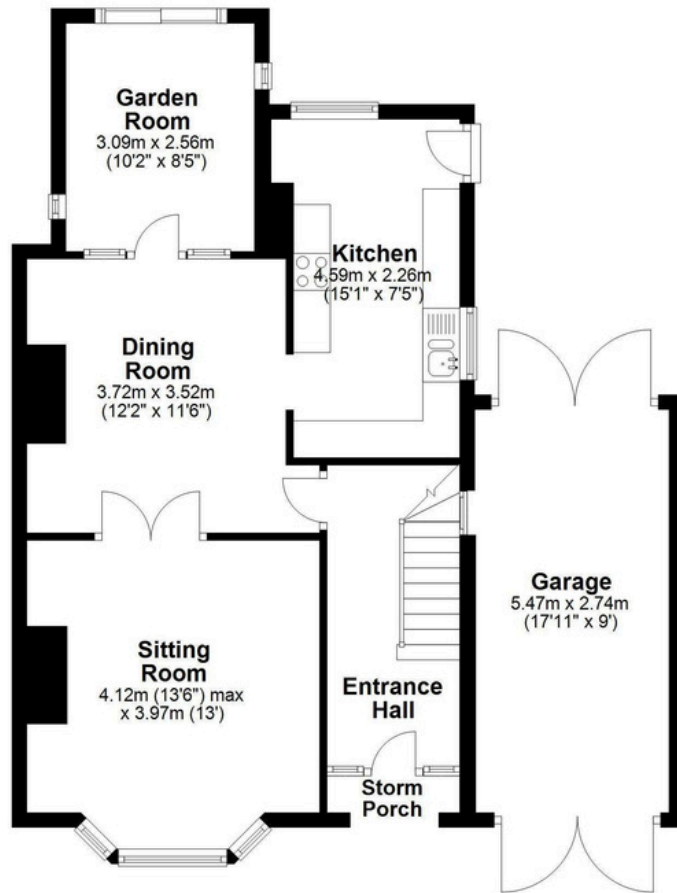


nested
chelmsford

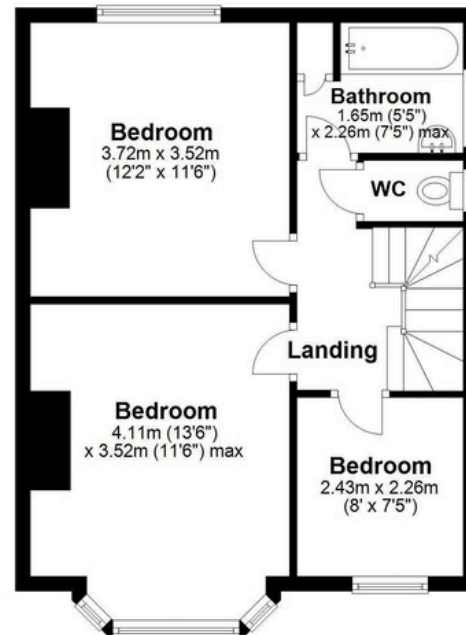


nested
chelmsford

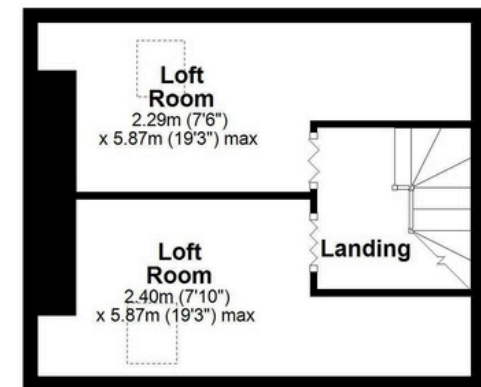
Ground Floor



First Floor



Second Floor



CALL ME TO VIEW

Jack Gundry

Partner Nested Chelmsford

01245 970045 | 07969 586519

jack.gundry@nested.com

www.nested.com/chelmsford