



Marylebone Square, London W1

🛏 1 bedroom 🛁 2 bathrooms £ 3,250,000



Lonnee Hamilton
Area Partner | Nestled
Lonnee.hamilton@nested.com
020 3886 2810 | 07535 604111
www.nested.com



Discover the epitome of luxury living in the heart of Marylebone with this stunning 1-bedroom + study apartment at Marylebone Square. Offering 899 sq ft of meticulously designed space, this third-floor residence boasts an additional 72 sq ft private balcony overlooking the charming Cramer Street.

Marylebone Square is an exclusive development that seamlessly blends contemporary design with timeless elegance. Residents enjoy access to a 24/7 concierge, private parking (available at an additional cost), and beautifully landscaped communal spaces, including a serene courtyard with water features and greenery.

Located just minutes from Baker Street and Bond Street stations, the apartment is perfectly positioned to enjoy the vibrant lifestyle Marylebone offers, with high-end boutiques, restaurants, and cultural landmarks such as The Wallace Collection and Regent's Park all within walking distance.

- Spacious layout ideal for modern living
- 24-hour Concierge service
- Surrounded by Marylebone's boutiques and restaurants
- Study area & guest bathroom
- Private balcony
- Great transport links nearby



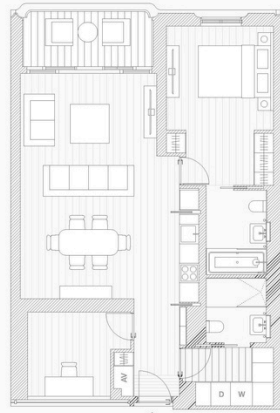
1 Bedroom Apartment & Study

MARYLEBONE SQUARE

Floors 1, 2 & 3



Living/Michelin Dining	4.9m x 6.9m
Master Bedroom	3.2m x 2.2m
Master Bathroom	1.8m x 2.6m
Study	2.6m x 2.5m
Guest bathroom	1.8m x 2.0m
Total*	83.6m ²
	909sqft
Balcony*	16.0m ²
	172sqft



*Net floor plans are draft and subject to change.

Tenure: 999 Years

Service Charge: £9.50 to £10.50 per square foot per annum

Parking available



nested
prime



Lonnee Hamilton

Area Partner | Nestled

Lonnee.hamilton@nested.com

020 3886 2810 | 07535 604111

www.nested.com