



Rainsford Road, CM1

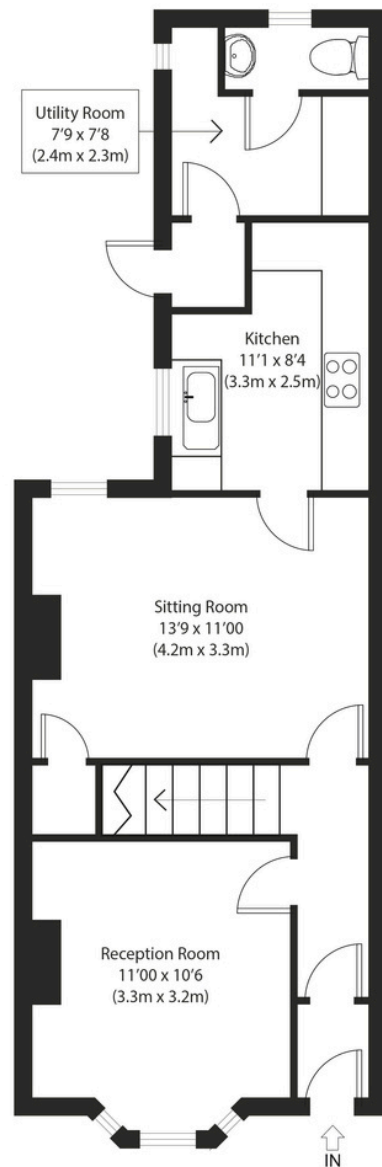
£425,000

A beautiful three bedroom end-of-terrace period home offering two reception rooms, separate kitchen, utility room, cloakroom, stylish first floor bathroom and fabulous garden all ideally positioned within immediate proximity to Chelmsford City Centre.

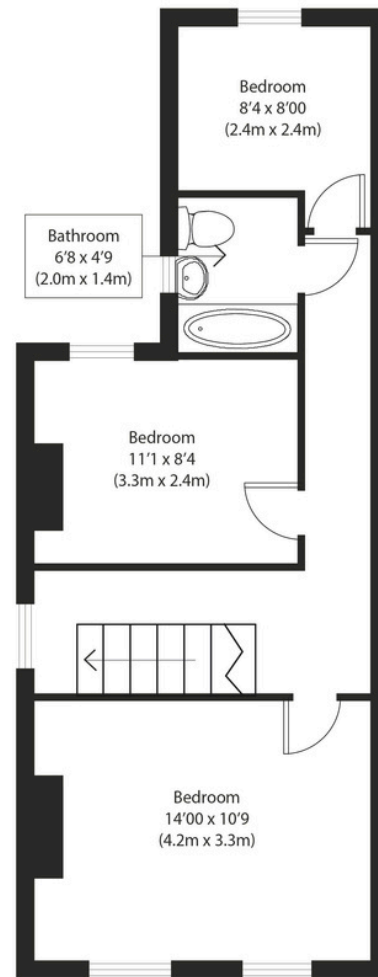




nestled
chelmsford



Ground Floor



First Floor


Approximate Gross Internal Area
1015 sq ft (94 sq m)

Disclaimer: Floorplan measurements are approximate and are for illustrative purposes only. While we do not doubt the floor plan accuracy and completeness, you or your advisors should conduct a careful, independent investigation of the property in respect of monetary valuation. copyright www.photohausgroup.co.uk



CALL ME TO VIEW

Jack Gundry

Partner Nested Chelmsford

01245 970045 | 07969 586519

jack.gundry@nested.com

www.nested.com/chelmsford