



Begonia Close, CM1

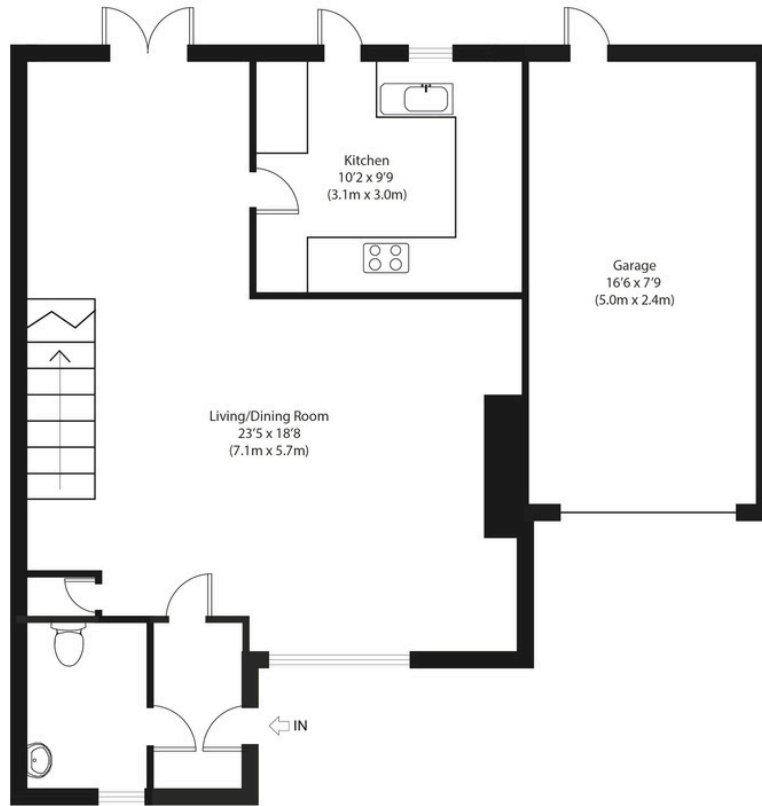
£425,000 - £450,000

Guide Price £425,000-£450,000 A well presented three bedroom link-detached family home including off street driveway parking, garage and a particularly generous sized garden-all ideally positioned within sought-after Springfield, providing easy access in to Chelmsford City Centre.

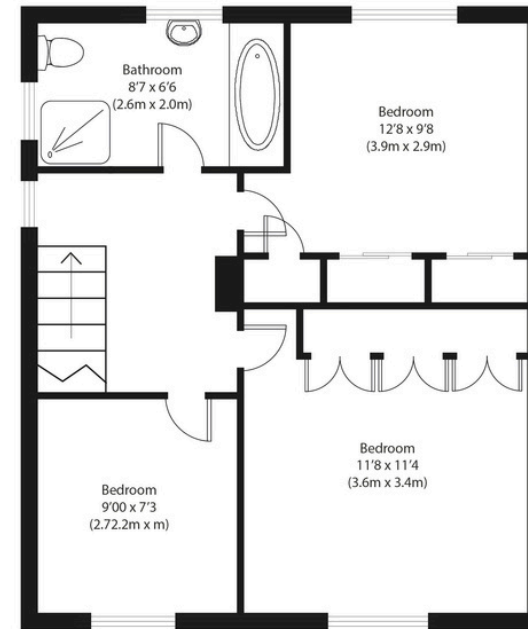




nested
chelmsford



Ground Floor



First Floor

Approximate Gross Internal Area
1065 sq ft (99 sq m)

Disclaimer: Floorplan measurements are approximate and are for illustrative purposes only. While we do not doubt the floor plan accuracy and completeness, you or your advisors should conduct a careful, independent investigation of the property in respect of monetary valuation. copyright www.photohausgroup.co.uk



CALL ME TO VIEW

Jack Gundry

Partner Nested Chelmsford

01245 970045 | 07969 586519

jack.gundry@nested.com

www.nested.com/chelmsford