



Marlborough Road, CM2

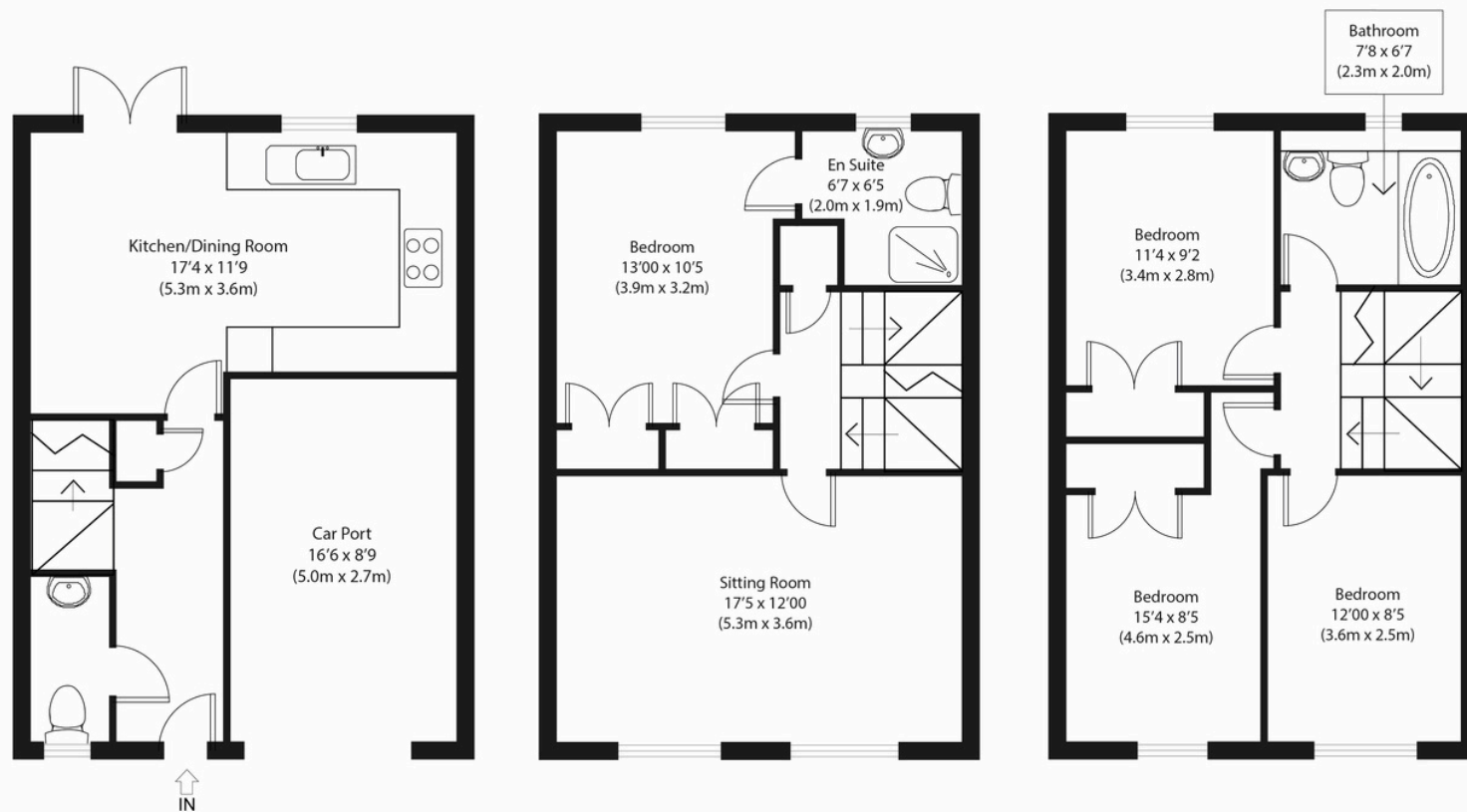
£590,000

A fabulous modern four double bedroom town house offering kitchen/dining room, spacious first floor reception room, two stylish bathrooms, attractive garden and car port, all conveniently positioned within highly sought-after Old Moulsham providing an excellent family home.





nested
chelmsford



Ground Floor

First Floor

Second Floor

Approximate Gross Internal Area
 Main House 1235 sq ft (115 sq m)
 Car Port 150 sq ft (14 sq m)
 Total 1385 sq ft (129 sq m)

Disclaimer: Floorplan measurements are approximate and are for illustrative purposes only. While we do not doubt the floor plan accuracy and completeness, you or your advisors should conduct a careful, independent investigation of the property in respect of monetary valuation. copyright www.photohausgroup.co.uk



CALL ME TO VIEW

Jack Gundry

Partner Nestled Chelmsford

01245 970045 | 07969 586519

jack.gundry@nested.com

www.nested.com/chelmsford