



Kincorth, The Tye, CM3

£875,000

A highly impressive four double bedroom detached family home including three reception rooms, kitchen/breakfast room, two bathrooms, double garage and private driveway, idyllically set amongst a substantial plot within the highly sought-after village of East Hanningfield.



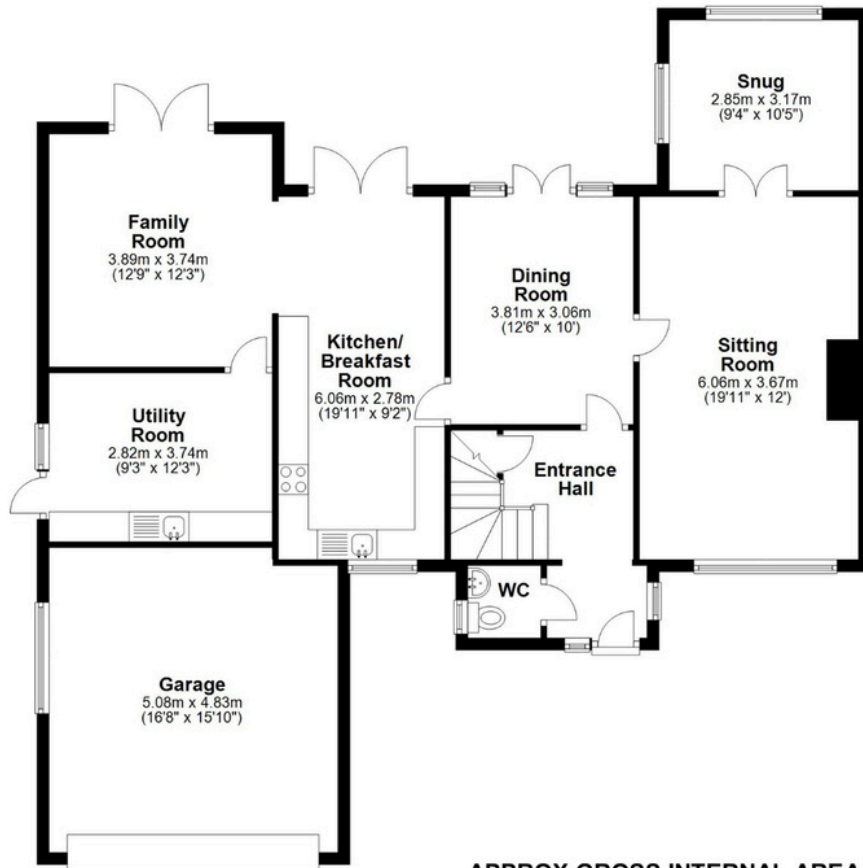
nested
chelmsford



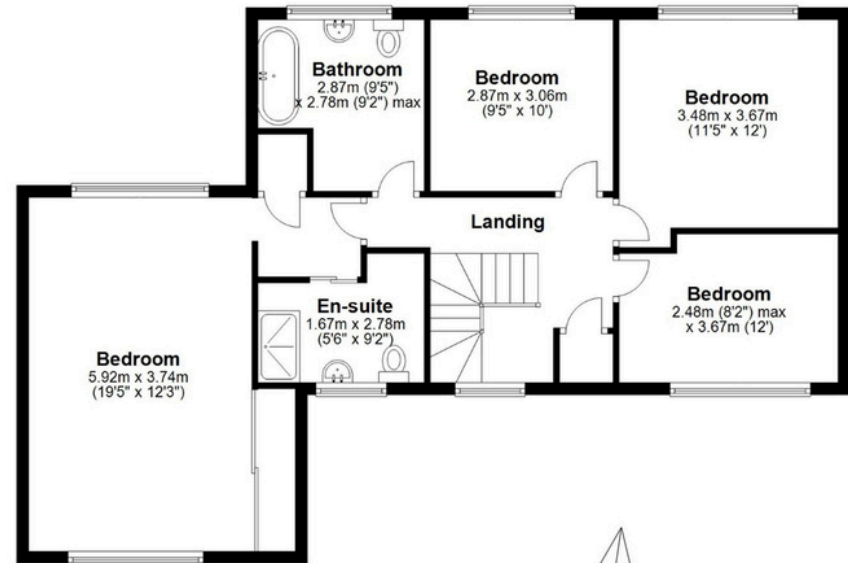
nested
chelmsford



Ground Floor



First Floor



APPROX GROSS INTERNAL AREA 182 SQ M 1950 SQ FT Excluding Garage
Measured in accordance with RICS guidelines.
This floor plan is for illustrative purposes only and is not to scale.
Copyright Nested 2024



CALL ME TO VIEW

Jack Gundry

Partner Nested Chelmsford

01245 970045 | 07969 586519

jack.gundry@nested.com

www.nested.com/chelmsford