



St. James Park, CM1

£600,000 (OIEO)

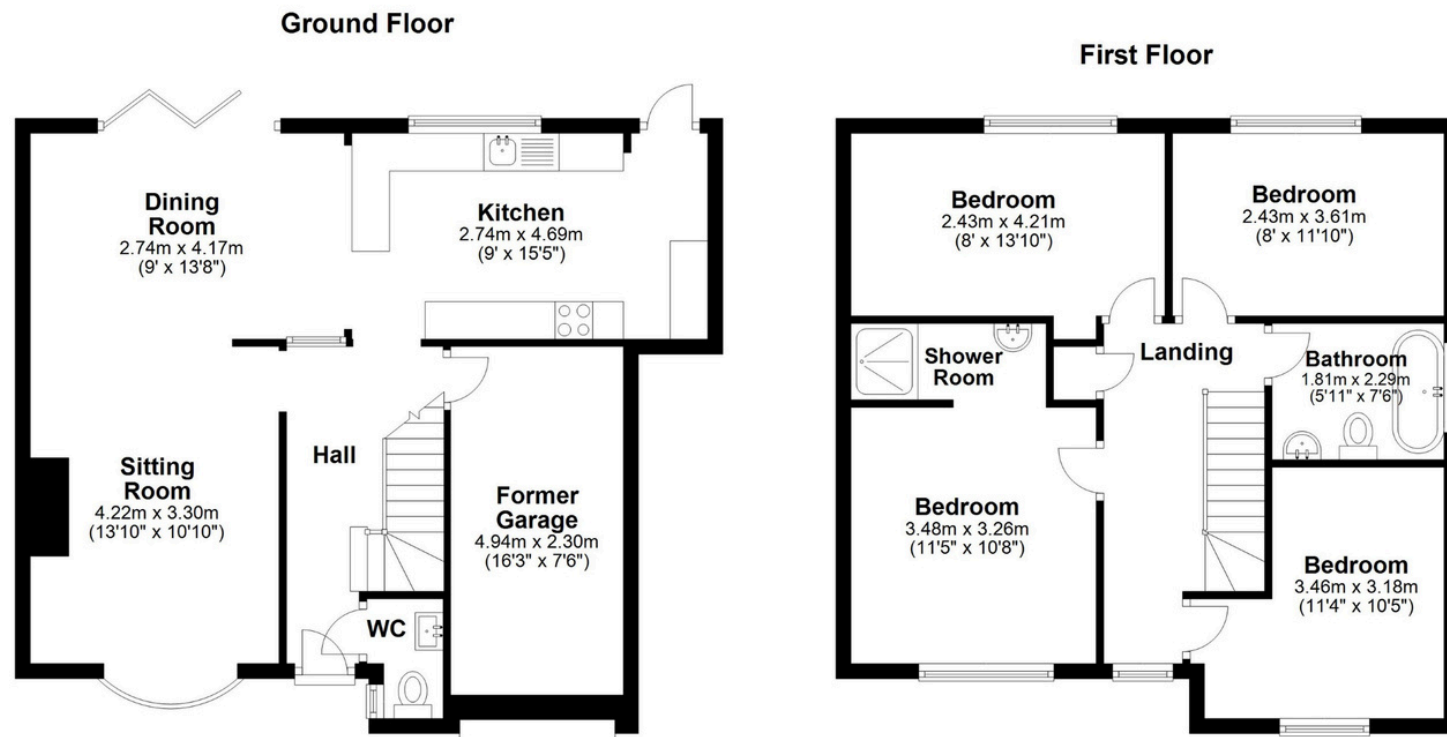
A beautifully presented four double bedroom detached family home providing contemporary open-plan living, charming garden and off street driveway parking all ideally nestled amongst St. James Park, a peaceful cul-de-sac within close proximity to Chelmsford City Centre.



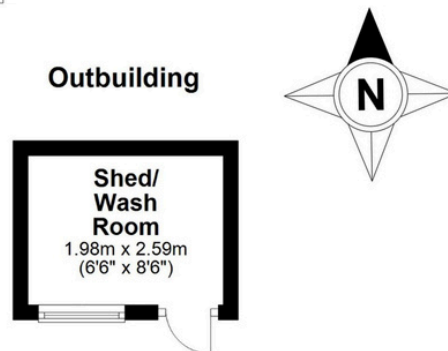
nested
chelmsford



nestled
chelmsford



APPROX GROSS INTERNAL AREA
 107 SQ M 1150 SQ FT
GARAGE & OUTBUILDING 17 SQ M 185 SQ FT
 Measured in accordance with RICS guidelines.
 This floor plan is for illustrative
 purposes only and is not to scale.
 Copyright Nested 2024



CALL ME TO VIEW

Jack Gundry

Partner Nested Chelmsford

01245 970045 | 07969 586519

jack.gundry@nested.com

www.nested.com/chelmsford