



Baddow Road, CM2

£425,000-£450,000

A delightful three bedroom mid-terraced period home, offering two bathrooms, two reception rooms and garage, thoughtfully modified over the years whilst retaining some lovely characterful features, ideally positioned within close proximity to Chelmsford City Centre.



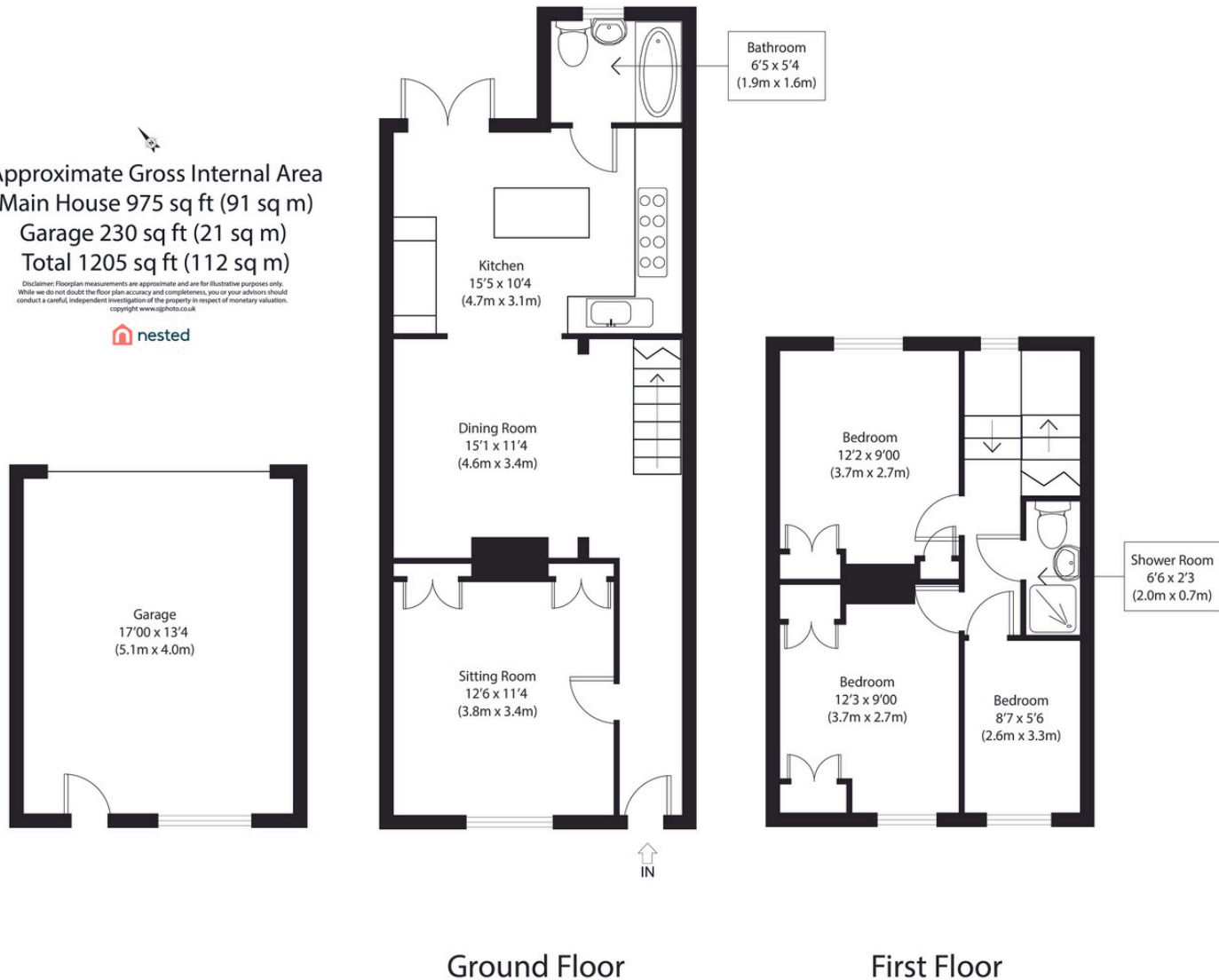
nested
chelmsford



nestled
chelmsford

Approximate Gross Internal Area
Main House 975 sq ft (91 sq m)
Garage 230 sq ft (21 sq m)
Total 1205 sq ft (112 sq m)

Disclaimer: Floorplan measurements are approximate and are for illustrative purposes only. While we do not doubt the floor plan accuracy and completeness, you or your advisors should conduct a careful, independent investigation of the property in respect of monetary valuation. copyright www.rightmove.co.uk



Ground Floor

First Floor



CALL ME TO VIEW

Jack Gundry

Partner Nested Chelmsford

01245 970045 | 07969 586519

jack.gundry@nested.com

www.nested.com/chelmsford