



## Skylark Walk, CM2

### £350,000-£375,000

A stylishly presented three bedroom end of terrace family home including impressive kitchen dining room, spacious living room, modern bathroom and garage all ideally positioned within sought-after Tile Kiln, providing easy access in to Chelmsford City Centre.



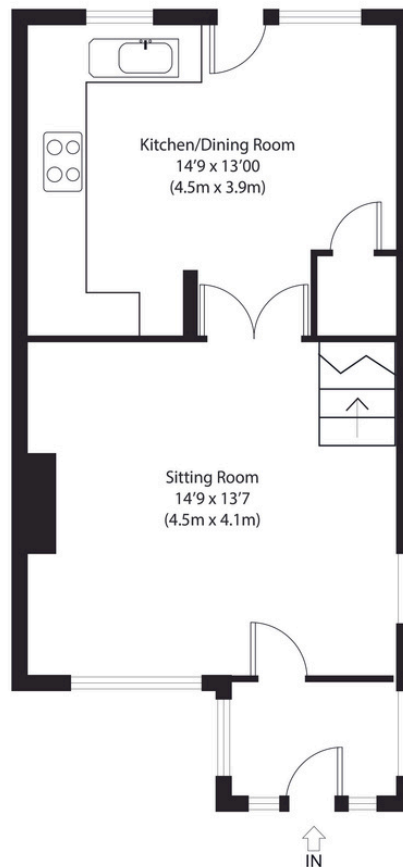
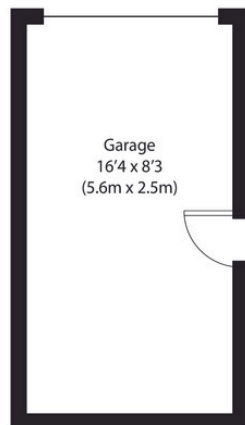
nested  
chelmsford



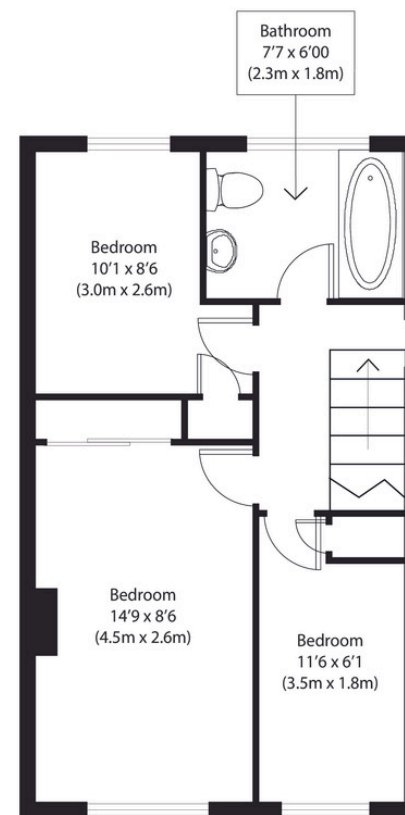
nested  
chelmsford

Approximate Gross Internal Area  
Main House 885 sq ft (82 sq m)  
Garage 135 sq ft (13 sq m)  
Total 1020 sq ft (95 sq m)

Disclaimer: Floorplan measurements are approximate and are for illustrative purposes only. While we do not doubt the floor plan accuracy and completeness, you or your advisors should conduct a careful, independent investigation of the property in respect of monetary valuation. copyright www.ogphoto.co.uk



Ground Floor



First Floor



**CALL ME TO VIEW**

**Jack Gundry**

**Partner Nested Chelmsford**

**01245 970045 | 07969 586519**

**jack.gundry@nested.com**

**www.nested.com/chelmsford**