



Petty Croft, CM1

£660,000

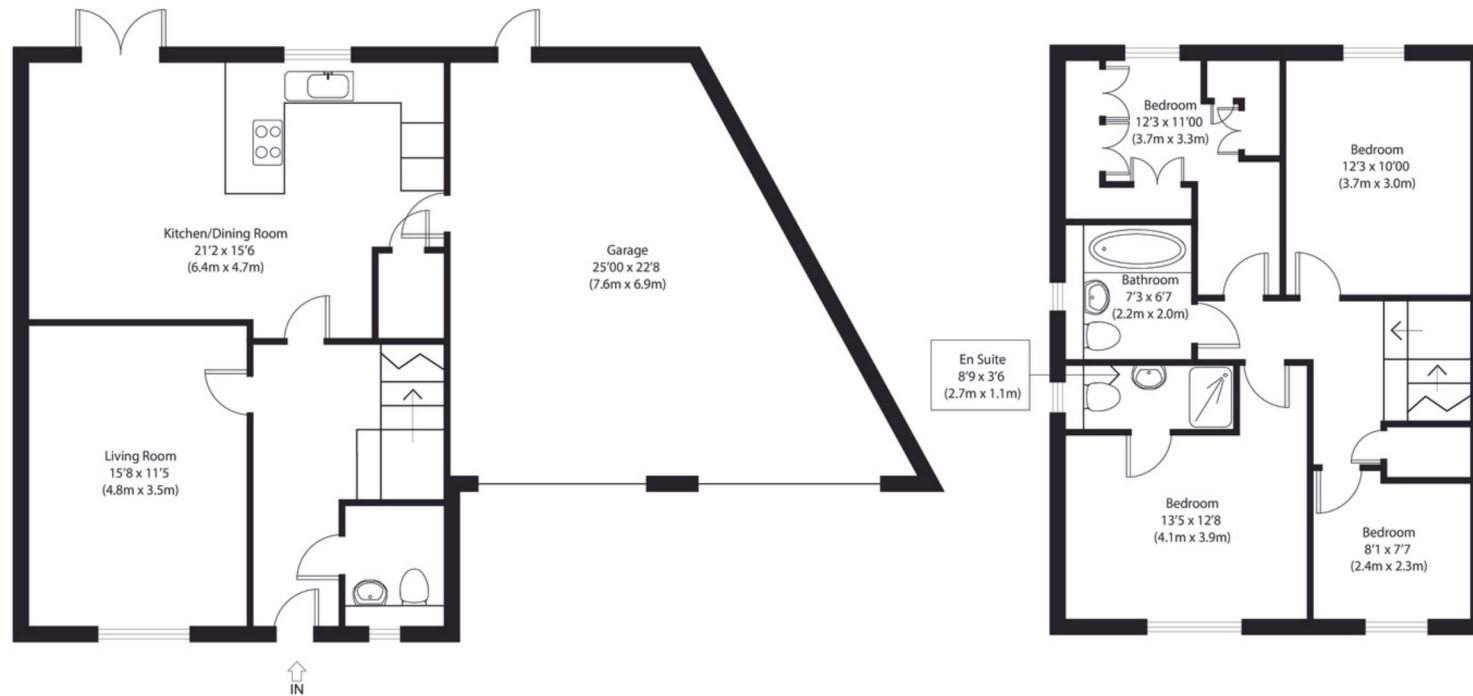
A substantial four bedroom modern detached family home providing contemporary living, landscaped patio garden and garage , all ideally positioned within highly sought-after Broomfield, providing easy access in to Chelmsford City Centre.



nestled
chelmsford



nestled
chelmsford



Ground Floor

First Floor

Approximate Gross Internal Area
1610 sq ft (Including Garage) (150 sq m)

Disclaimer: Floorplan measurements are approximate and are for illustrative purposes only. While we do not doubt the floor plan accuracy and completeness, you or your advisors should conduct a careful, independent investigation of the property in respect of monetary valuation. copyright www.ojphoto.co.uk



CALL ME TO VIEW

Jack Gundry

Partner Nested Chelmsford

01245 970045 | 07969 586519

jack.gundry@nested.com

www.nested.com/chelmsford