



nested  
chelmsford

The Modern Estate Agent

Maltese Road, Chelmsford, CM1



3 Bedrooms



Parking



£665,000

An impressive extended three bedroom detached family home offering huge potential, super garden in excess of 70', as well as private driveway parking for several vehicles and a garage. There are also two reception rooms and a kitchen/breakfast room providing ample scope to entertain all perfectly positioned within this prime central Chelmsford City location.



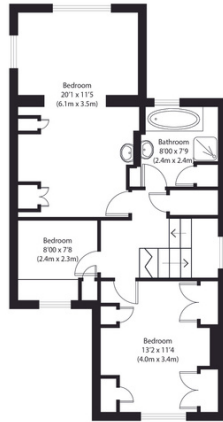
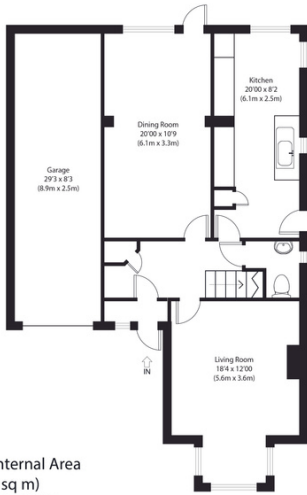
### Key features:

- Great potential
- Close to City Centre
- Garage
- Off street driveway parking
- Three bedroom detached house
- Generous sized garden
- Two reception rooms
- Excellent local schools



nested  
chelmsford





Approximate Gross Internal Area  
1585 sq ft (147 sq m)

Measurements are approximate and are for illustrative purposes only. We do not warrant the accuracy of any measurements and shall not be liable for any errors or omissions. For more information, please contact our sales team. Copyright: www.nested.co.uk



Ground Floor

First Floor



Contact me to view



**Jack Gundry**  
**Partner Nested Chelmsford**  
 01245 970045 | 07969 586519  
[jack.gundry@nested.com](mailto:jack.gundry@nested.com)  
[www.nested.com/chelmsford](http://www.nested.com/chelmsford)