



nested
chelmsford

The Modern Estate Agent

Willede, Riverside, Chelmsford, CM2



3 Bedrooms



Parking



Offers in
excess of
£600,000



nested
chelmsford



A unique three double bedroom, two storey semi-detached family home including attractive private front and rear gardens and secure gated driveway offering parking for numerous vehicles, perfectly positioned within this prime central Chelmsford City location, yet in the other direction, Riverside footpath and cycle track leads through "Chelmer Valley Nature Reserve" all the way to the village of Broomfield and beyond.

Key features:

- Rare opportunity
- Prime City Centre location
- Huge Potential
- Gated driveway parking
- Three bedroom semi-detached house
- Substantial garden
- High ceilings
- No onward chain



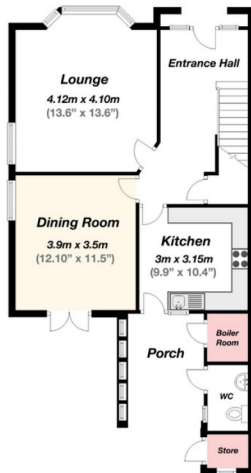
nested
chelmsford



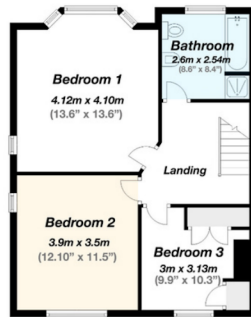


nested
chelmsford

Ground Floor



First Floor



Contact me to view



Jack Gundry
Partner Nested Chelmsford
01245 970045 | 07969586519
jack.gundry@nested.com
www.nested.com/chelmsford



