



Havengore, CM1

£390,000 (OIEO)

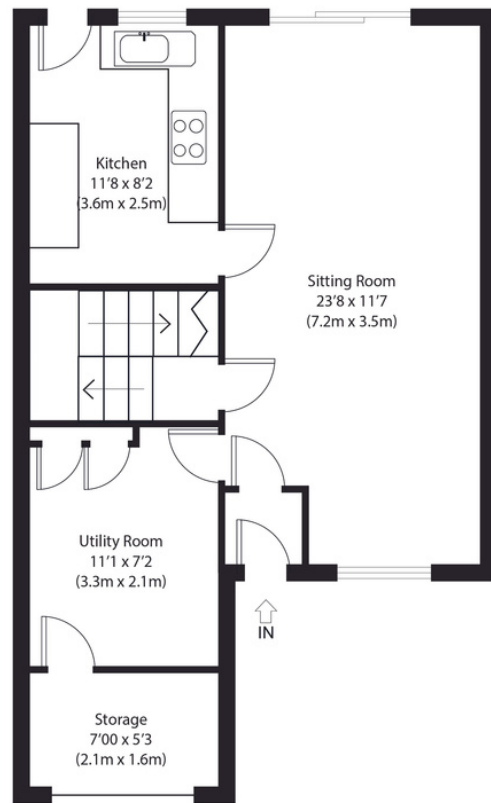
A stylishly presented three bedroom mid-terraced family home including generous off street driveway parking and an attractive landscaped garden-all ideally positioned within sought-after Springfield, providing easy access in to Chelmsford City Centreought-after Springfield, providing easy access in to Chelmsford City Centre



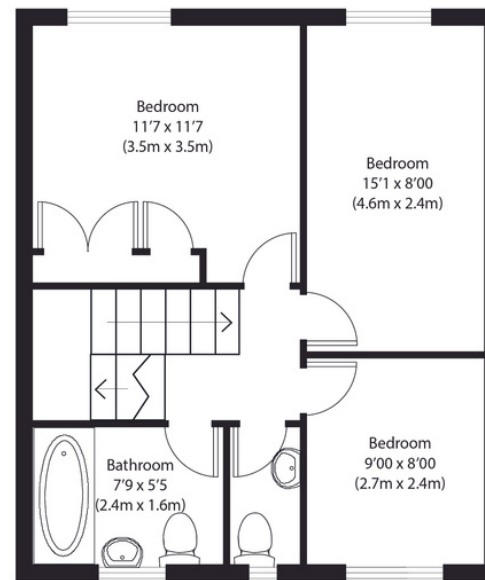
nested
chelmsford



nested
chelmsford



Ground Floor



First Floor

Approximate Gross Internal Area
1055 sq ft (98 sq m)

Disclaimer: Floorplan measurements are approximate and are for illustrative purposes only. While we do not doubt the floor plan accuracy and completeness, you or your advisors should conduct a careful, independent investigation of the property in respect of monetary valuation. copyright www.rjphoto.co.uk



CALL ME TO VIEW

Jack Gundry

Partner Nested Chelmsford

01245 970045 | 07969 586519

jack.gundry@nested.com

www.nested.com/chelmsford