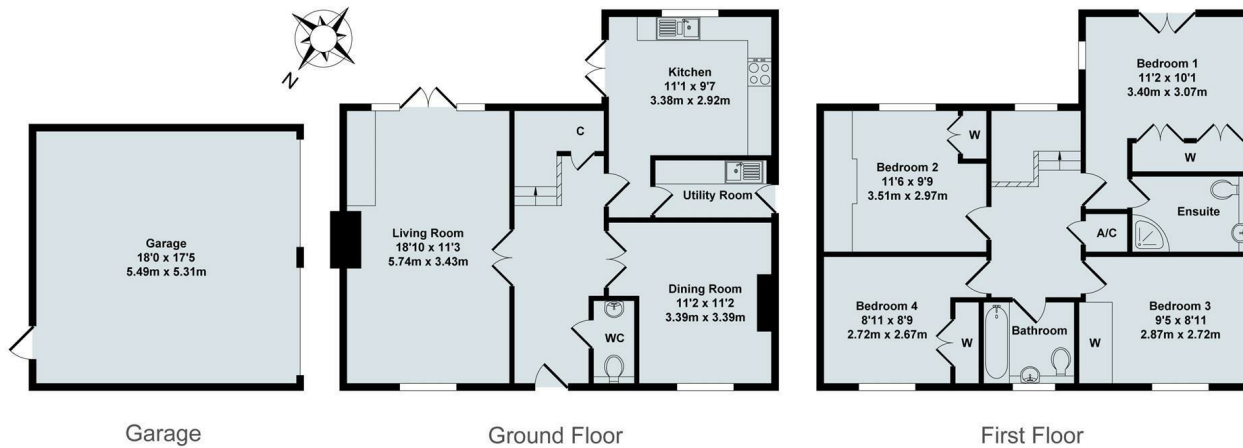




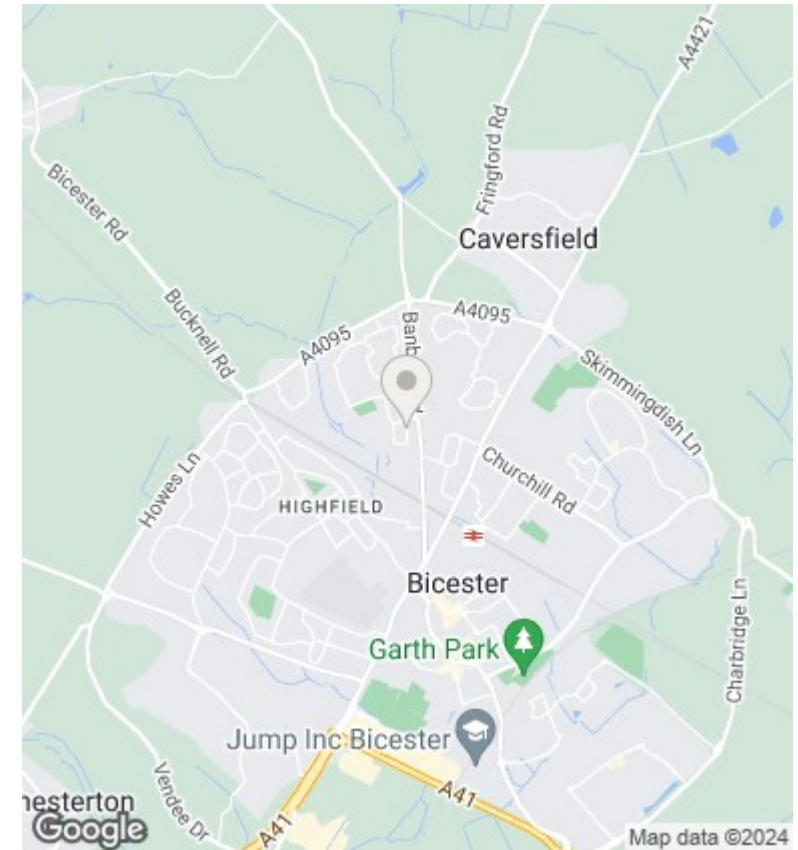
## 7 Reedmace Road, Bicester, OX26 3WN

£2,200 - 27th April 2024.

- Four double bedrooms
- Unfurnished
- Off street parking for 2 cars
- Council Tax Band E
- Two bathrooms and cloakroom
- Brand new kitchen appliances
- Double garage
- Gas CH
- Mains gas, electricity and water
- EPC rating D



Total Approx. Floor Area 1566 Sq.Ft. (145.50 Sq.M.)  
 All items illustrated on this plan are included in the "Total Approx Floor Area"



### Directions

### Viewings

Viewings by arrangement only. Call 01865 515900 to make an appointment.

### Council Tax Band

E

### EPC Rating:

D

Energy Efficiency Rating		Current	Potential
<i>Very energy efficient - lower running costs</i>			
(92 plus)	A		
(81-91)	B		77
(69-80)	C		
(55-68)	D	66	
(39-54)	E		
(21-38)	F		
(1-20)	G		
<i>Not energy efficient - higher running costs</i>			
<b>England &amp; Wales</b>		EU Directive 2002/91/EC	