

3 Bedroom Detached Bungalow • Beautiful Landscaped Gardens • Driveway for 4 Cars & Garage • Generous Sized Living Space • Quiet Cul-de-Sac Location



6 Crumplers Close, Lytchett Matravers

£550,000 Freehold

OpenDaws
HOMES





Serenely located 3-bedroom detached bungalow with beautifully landscaped gardens. Spacious living area for relaxation and entertaining. Tranquil rear garden oasis with dining area and wooden gazebo. Lush front garden, expansive driveway, and double garage. Ideal blend of comfort and sophistication in a private cul-de-sac setting. Council Tax band: F

Tenure: Freehold

EPC Energy Efficiency Rating: D

EPC Environmental Impact Rating: D



Lounge

Enter a spacious lounge flooded with natural light and centered around a gas fire within a marble and granite feature fireplace. Soft carpeting underfoot complements the ceiling cornice and ambient ceiling lights. Double doors seamlessly connect further living spaces. This generously sized lounge offers the ideal setting for relaxation or entertaining, with ample space for gatherings and quiet moments alike. Whether curling up with a book or hosting guests, this inviting space provides the perfect backdrop for creating cherished memories and enjoying the comforts of home.

Dining Room

18' 0" x 12' 9" (5.49m x 3.89m)

Step into the open-plan dining area, where a six-seater dining table and spacious dresser are currently displayed in this delightful room. Bathed in natural light, this expansive space offers ample room for family meals and gatherings. With its bright and airy ambiance, it presents the perfect setting for enjoying culinary delights and shared moments. Moreover, its versatile layout provides an opportunity for future development with integration into the kitchen area, promising a seamless flow for open-plan living. Whether dining with loved ones or envisioning future possibilities, this welcoming space invites you to embrace the joys of home.

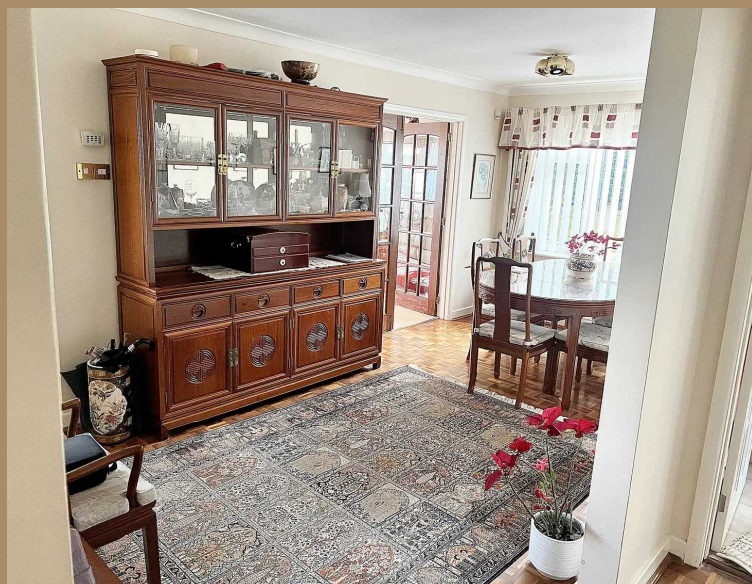
Lounge

Enter a spacious lounge flooded with natural light and centered around a gas fire within a marble and granite feature fireplace. Soft carpeting underfoot complements the ceiling cornice and ambient ceiling lights. Double doors seamlessly connect further living spaces. This generously sized lounge offers the ideal setting for relaxation or entertaining, with ample space for gatherings and quiet moments alike. Whether curling up with a book or hosting guests, this inviting space provides the perfect backdrop for creating cherished memories and enjoying the comforts of home.

Dining Room

18' 0" x 12' 9" (5.49m x 3.89m)

Step into the open-plan dining area, where a six-seater dining table and spacious dresser are currently displayed in this delightful room. Bathed in natural light, this expansive space offers ample room for family meals and gatherings. With its bright and airy ambiance, it presents the perfect setting for enjoying culinary delights and shared moments. Moreover, its versatile layout provides an opportunity for future development with integration into the kitchen area, promising a seamless flow for open-plan living. Whether dining with loved ones or





Lounge

Enter a spacious lounge flooded with natural light and centered around a gas fire within a marble and granite feature fireplace. Soft carpeting underfoot complements the ceiling cornice and ambient ceiling lights. Double doors seamlessly connect further living spaces. This generously sized lounge offers the ideal setting for relaxation or entertaining, with ample space for gatherings and quiet moments alike. Whether curling up with a book or hosting guests, this inviting space provides the perfect backdrop for creating cherished memories and enjoying the comforts of home.

Dining Room

18' 0" x 12' 9" (5.49m x 3.89m)

Step into the open-plan dining area, where a six-seater dining table and spacious dresser are currently displayed in this delightful room. Bathed in natural light, this expansive space offers ample room for family meals and gatherings. With its bright and airy ambiance, it presents the perfect setting for enjoying culinary delights and shared moments. Moreover, its versatile layout provides an opportunity for future development with integration into the kitchen area, promising a seamless flow for open-plan living. Whether dining with loved ones or envisioning future possibilities, this welcoming space invites you to embrace the joys of home.



Lounge

Enter a spacious lounge flooded with natural light and centered around a gas fire within a marble and granite feature fireplace. Soft carpeting underfoot complements the ceiling cornice and ambient ceiling lights. Double doors seamlessly connect further living spaces. This generously sized lounge offers the ideal setting for relaxation or entertaining, with ample space for gatherings and quiet moments alike. Whether curling up with a book or hosting guests, this inviting space provides the perfect backdrop for creating cherished memories and enjoying the comforts of home.

Dining Room

18' 0" x 12' 9" (5.49m x 3.89m)

Step into the open-plan dining area, where a six-seater dining table and spacious dresser are currently displayed in this delightful room. Bathed in natural light, this expansive space offers ample room for family meals and gatherings. With its bright and airy ambiance, it presents the perfect setting for enjoying culinary delights and shared moments. Moreover, its versatile layout provides an opportunity for future development with integration into the kitchen area, promising a seamless flow for open-plan living. Whether dining with loved ones or envisioning future possibilities, this welcoming space invites you to embrace the joys of home.



Kitchen

9' 11" x 13' 11" (3.02m x 4.24m)

Step into the kitchen, where functionality meets elegance. Abundant storage space is provided by base and overhead units, along with glass-fronted display





6, Crumplers Close, Lytchett Matravers, BH16 6DG



Total Area: 157.6 m² ... 1697 ft²

All measurements are approximate and for display purposes only

You can include any text here. The text can be modified upon generating your brochure.

OpenDaws
HOMES

You can include any text here. The text can be modified upon generating your brochure.

