



Clifton Terrace | | Ilkley | LS29 8ED

£499,950

TW | **TRANMER
WHITE**
Trusted Estate Agents

5 Clifton Terrace | Ilkley | LS29 8ED £499,950

An immaculate stone built property retaining much of its period character, ideally situated within a short walk of Ilkley town centre and the train station. Laid out over four floors the accommodation offers well proportioned rooms finished to a high standard throughout with bespoke fixtures and fittings. The lay out in brief comprises; A welcoming entrance hall, sitting room with media wall, living/dining room with a wood burning stove and French doors onto the garden area, kitchen, stairs down to the basement/ utility area with external access. To the first and second floor there are three double bedrooms, bathroom and a useful study/ dressing room. Outside there is a parking space with car charging facilities and an enclosed West facing garden. Stone built outside store with power and lights. Further scope for extension over the kitchen or adding dormer windows to the Principal bedroom subject to the relevant planning permissions and also potential for Ensuite facilities to be created within the dressing room to the Principal bedroom.

- Stone period terrace property
- Close to the town centre and train station
- Enclosed garden
- Useful basement/utility area with external access
- Potential for Ensuite facilities to the Principal bedroom
- Parking space and charging facilities
- Three bedrooms
- Stone outbuilding
- Excellent scope for extension
- Study/ Dressing Room

Entrance Hall

A smart composite entrance door leads to an inner vestibule with a tiled floor and coving to the ceiling. A further wooden and glazed inner door leads to the hallway.

Sitting Room

1303 x 11'11 (4.04m x 3.63m)

With a window to the front elevation and fitted plantation shutters, coving to the ceiling. A bespoke built media wall complete with space for a TV, cupboards and shelving. Fireplace opening with a solid stone hearth and brick inset.

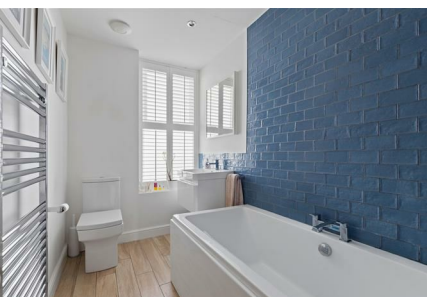
Living/ Dining Room

1304 x 10'09 (397.46m x 3.28m)

Having a Yorkshire stone flagged floor, original Pine cupboards to the recess providing generous storage and coving to the ceiling. Bespoke cloaks storage with built in shelf and bench. French doors lead onto the enclosed rear garden. Feature fireplace with a wood burning stove and stone hearth. A breakfast bar area perfectly blending through to the kitchen with matching cupboards and granite work top.



An immaculate stone built period property ideally situated within a short walk of the town centre amenities and the train station.



Kitchen

9'10 x 6'11 (3.00m x 2.11m)

A range of wall and base units with coordinating granite work tops and upstands, tiling to the splash areas, recessed stainless steel sink and drainer. Integral appliances to include a range cooker with an extractor hood over, microwave and fridge/freezer. There are windows to both the rear and side elevations and tiling to the floor area.

Basement/Utility Comprising

Room One

13'01 x 6'01 (3.99m x 1.85m)

With plumbing for a washing machine, worktop, wall mounted boiler, meters and consumer units. There is an external door providing access down the side of the house to the rear garden and also to the front of the property

Room Two

12'08 x 7'05 (3.86m x 2.26m)

Providing a useful storage area with power and lights.

Steps to the first floor

A large window to the rear elevation and useful built in storage cupboards.

Bedroom

13'05 x 9'07 (4.09m x 2.92m)

With a window to the rear elevation.

Bedroom

13'03 x 9'06 (4.04m x 2.90m)

With a window to the front elevation and coving to the ceiling.

Bathroom

9'01 x 5'04 (2.77m x 1.63m)

A window to the front elevation with fitted plantation shutter, a bath with a shower over, vanity sink unit, WC, towel rail, tiling to the splash areas, an Oak effect tiled floor and spotlights to the ceiling.

Stairs to the Second Floor

Bedroom

16' 10 x 13'10 (4.88m 3.05m x 4.22m)

Triple built in wardrobes, two Velux window to the rear elevation providing stunning views across Ilkley and the Moors beyond and a further Velux window to the front elevation. Spotlights to the ceiling and loft access hatch.

Study/ Dressing Room

8'04 x 6'04 (2.54m x 1.93m)

With a Velux window to the front elevation. This room could readily convert to create ensuite facilities.

Parking

A parking space and electric car charging facilities. Zoned residents parking permits also available.

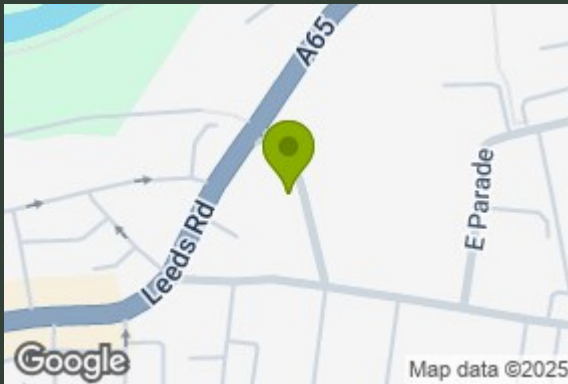
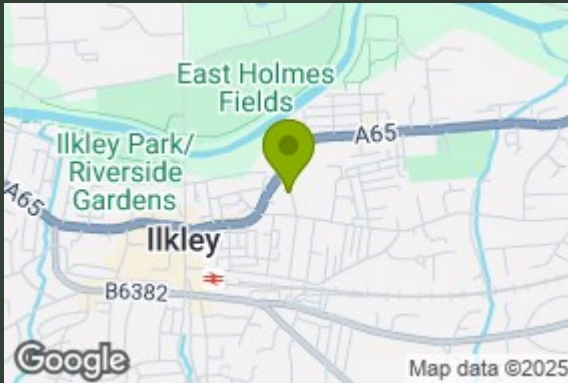
Garden

A West facing enclosed rear garden with paved patio area, decking and gated access.

Outbuilding

7'8 x 6'0 (2.34m x 1.83m)

Stone garden store with power and lights. Would make an ideal home office or studio.

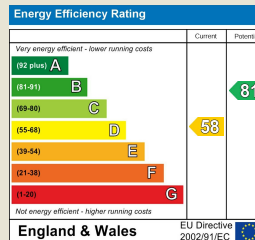


Total Area: 134.2 m² ... 1445 ft²

All measurements are approximate and for display purposes only.

No liability is accepted by either the agency or Box Property Solutions Ltd as to the exact measurements of the rooms.

Box Property Solutions Ltd retains the copyright on this plan and allows agents to use it with agreed permission.



139 Bolling Road
Ben Rhydding
Ilkley
West Yorkshire
LS29 8PN
01943 661141

ilkley@tranmerwhite.co.uk
<https://www.tranmerwhite.co.uk/>