



**CORONATION
SQUARE**

LEYTON




Computer generated image.



Welcome to Coronation Square

**A PLACE WITH HEART.
A HOME TO LOVE.**

New 1, 2 & 3 bedroom apartments in the heart of Leyton. Set around a Central Square with amenities from shops to sports and health facilities, these homes are perfect for first time buyers, families, professionals and those looking for a balanced city lifestyle.



03



CORONATION SQUARE

LEYTON



Computer generated image.



05



Enjoy all that Leyton has to offer

Much sought after by those who love its combination of character and sense of community, Leyton has deep roots and a distinctive identity. With its great connections to central London and the City, together with an excellent choice of cafés, relaxing pubs, local shops and gardens, Coronation Square is ideal for modern living.

From the bustling high street to a green oasis



07

A breath of fresh air



^ CORONATION GARDENS

There is a strong beat to Leyton's urban pulse, and yet a wealth of open spaces that will draw you outdoors all year round. The buzzing plaza at Coronation Square for instance, brings a continental feel, enhancing the connections to Leyton's beautiful Coronation Park, while the wonderful local parklands and waterways are perfect to visit all year round. From special bird havens to the hundreds of acres of Queen Elizabeth Olympic Park, there is room for everyone.





^ WALTHAMSTOW WETLANDS

Coronation Gardens has been Leyton's civic park for over a century. Here you can enjoy the lawns and colourful summer borders, explore the maze near the rose garden, or find shade under one of the many mature trees. Its original bandstand now hosts performances by local musicians across a range of genres. Leyton's Saturday food market gathers around it too, with stalls selling fresh-baked bread, brioche rolls and bagels, artisan coffee, and some of the capital's favourite street food from around the world.



^ MIDDLESEX FILTER BEDS

09



LEYTON
STATION

LONDON CITY
AIRPORT

STRATFORD

LEYTON
ORIENT FC

CORONATION
GARDENS

SALES
OFFICE

Aerial view with computer generated image of Coronation Square. The development layout does not show details of gradients of land, boundary treatments, local authority street lighting or landscaping. It is our intention to build in accordance with this layout. However, there may be occasions when the property designs, boundaries, landscaping and positions of roads and footpaths change as the development proceeds. Please check the details of your chosen property with a sales executive prior to reservation.

QUEEN ELIZABETH
OLYMPIC PARK

CANARY
WHARF

HACKNEY
MARSHES



CORONATION
SQUARE
LEYTON





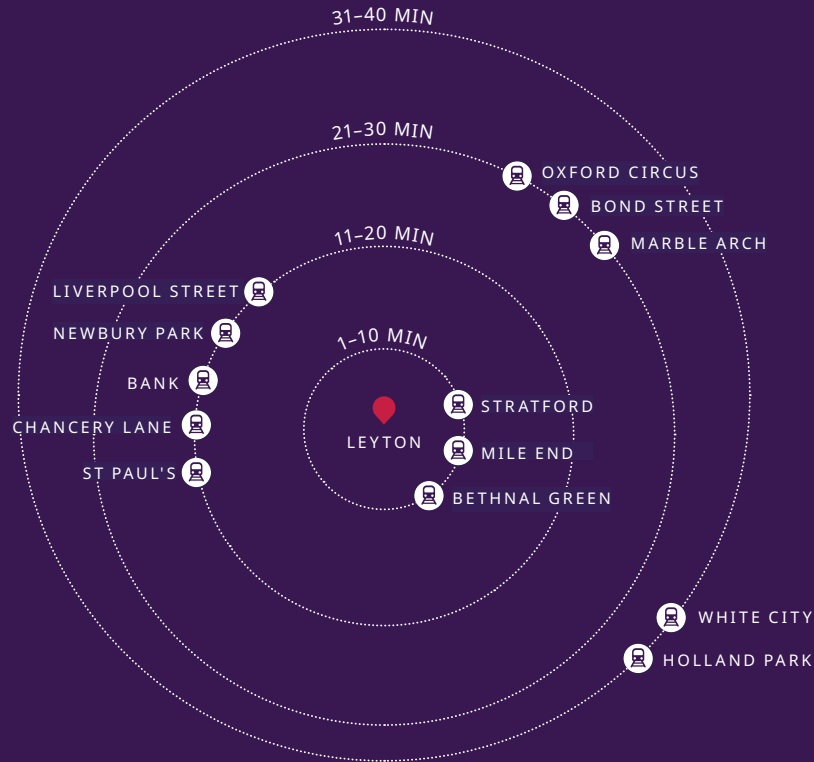
London calling

MAKING IT EASIER TO BE WHERE YOU WANT TO BE.

With some of the world's best sights, attractions and activities easily in reach, Coronation Square is perfect for commuting or visiting the capital.

Leyton underground station is a short walk away with Central line services into Stratford taking just two minutes. DLR connections here lead to Canary Wharf, while Central line connections head to London Liverpool Street and the West End.

BY TUBE FROM LEYTON STATION – ZONE 3



ON FOOT AND BICYCLE FROM CORONATION SQUARE



**CORONATION
SQUARE**
LEYTON



4 MIN	Leyton High Road	1 MIN
9 MIN	Leyton Jubilee Park	3 MIN
11 MIN	Leyton Station	4 MIN
11 MIN	Queen Elizabeth Olympic Park	4 MIN
13 MIN	Leyton Cricket Ground	5 MIN
17 MIN	Leyton Midland Road Station	5 MIN
19 MIN	Hackney Marshes	8 MIN
22 MIN	Leyton Leisure Centre	7 MIN
26 MIN	Leytonstone High Road Station	8 MIN
27 MIN	Westfield Stratford City	10 MIN
28 MIN	Lea Bridge Station	8 MIN
36 MIN	Stratford Station	11 MIN



Invest
bright

Computer generated image.

ed in a
future



15

A place alive with people and possibilities

Coronation Square is 21st century London. Fountains of water bounce with light and energy in an exciting development that is bringing new jobs and investment, and encouraging existing businesses. It is a place alive with people enjoying a setting made for everyday life and for the special events that bring people together.



Computer generated image.



Computer generated image.

THE CIVIC SQUARE – SOCIAL AND SUSTAINABLE

The new public square is a focus for Coronation Square and all Leyton residents. It's the place to visit the outdoor market as well as the new market hall and enjoy the superb new amenities that line the square, or if you like, to simply sit and take in the surroundings.



HIGH QUALITY LANDSCAPING – PEOPLE, PLANTS AND PUBLIC OPEN SPACE

Coronation Square has been designed by those with a talent and a passion for landscaping and there's a rich biodiversity in the shrubs, wildflowers and habitats landscaped into the development. Nowhere can it be more appreciated than when sitting or engaging with friends at the communal benches and tables.



PLAY AREAS TO ENGAGE YOUNG MINDS AND BODIES

The open spaces at Coronation Square have dedicated play places that children will love, from natural lawns to equipment designed for imaginative play. There is also outdoor table tennis, and a water feature to bring a big splash of extra fun.



NHS HEALTH HUB AND PHARMACY

A modern, purpose-built health centre for the Coronation Square neighbourhood with handy pharmacy providing treatment and consultation for all registered residents.





PRE-SCHOOL NURSERY AND PRIVATE PLAY AREA

This purpose-built nursery on the Square is in a car-free zone to make drop-off and collection safer. There will be plenty of buggy parking for parents and carers while the children enjoy fresh-air play in the nursery's own private outdoor area.

SPORTS CENTRE

With a ground-floor café opening onto the Square, the Sports Centre is equipped with first-floor studios for exercise and dance classes, and multi-purpose courts for badminton, basketball, five-a-side and gymnastics. This is the perfect place for future Olympic champions to develop their skills.



Choose a home that suits you

Designed from the start to complement its surroundings in every way, Coronation Square brings its own contemporary style and feel to Leyton. Using London Brick, an icon of the capital's streets, Coronation Square's red brick façades are contrasted with white bricks for a fresh new look.

Inside each home, whether you choose a 1, 2 or 3 bedroom apartment, you'll find thoughtfully designed living space. Over half of the homes at Coronation Square have open views with dual-aspect rooms inviting the sunlight in.

You can also relax on your own balcony or terrace looking out across garden courtyards at ground or podium level.



Photography of Coronation Square show apartment.



Photography of Coronation Square show apartment.



Photography of Coronation Square show apartment.



CORONATION SQUARE

LEYTON

SPECIFICATION

The specification at Coronation Square gives you a unique opportunity to select which colour palette you prefer for your kitchen and bathroom. Choose between the light and dark palettes and put your own stamp on your new home.

The information below shows the intended specification for each of the homes available at Coronation Square. Everything has been professionally designed and thoughtfully chosen to maximise space and light.

KITCHEN

- Nobilia fitted kitchen units, laminate worktop and full-height splashback
- Integrated appliances
 - Siemens stainless steel built-under single oven or double oven built in tall housing
 - Siemens ceramic hob
 - Integrated extractor hood
- Zanussi Fridge/Freezer
- Zanussi Dishwasher
- Zanussi Washer/Dryer*
- Soft close doors/drawers
- Under wall unit lighting
- Handle lighting
- Franke composite sink with 1.5 bowl in black or grey and Franke tap

BATHROOMS

- White sanitaryware throughout with 180 litre bath
- Satin chrome mixer tap to wash hand basins
- Thermostatic shower, bath screen and full-height tiling to bath
- Half-height tiling to all walls
- Thermostatic shower and full-height tiling to shower enclosure in en suite
- Wall mirror included to main bathroom
- Tiled flooring
- Extractor fan
- Shaver socket to en suite or main bathroom (if no en suite)
- Satin chrome heated towel rail to bathroom and en suite

DOORS AND WINDOWS

- Timber front entrance door with multi-point lock
- Aluminium double glazed windows with security locks
- Video door entry system

ELECTRICAL

- Satin chrome downlighters to kitchen/living area, bathrooms, en suites and cloakrooms
- Energy-efficient pendant ceiling lights to all other rooms
- USB charge point to kitchen double socket**
- Satin chrome switches throughout
- Multi-socket media plate to living room (specific provider to be connected by purchaser)
- TV and telephone point to bedroom 1 (specific provider to be connected by purchaser)
- Mains operated smoke detector with battery backup
- Mechanical extract ventilation to selected plots†
- Balcony downlight

HEATING

- Central district heating system – no gas to individual dwellings
- Underfloor heating throughout with the exception to bathrooms, cloakrooms and en suites

INTERNAL FINISHES

- White painted internal doors with chrome furniture
- Soft white painted walls and smooth white ceilings
- White painted mouldings including skirting boards, architraves and window boards

FLOORING

- Abingdon essential carpet to bedrooms
- Amtico Spacia to all other areas, (with the exception to bedrooms and bathrooms)

WARDROBES

- 1300mm wardrobe with glazed sliding doors to bedroom 1 (location as shown in brochure)††
- Top shelf and hanging rail included

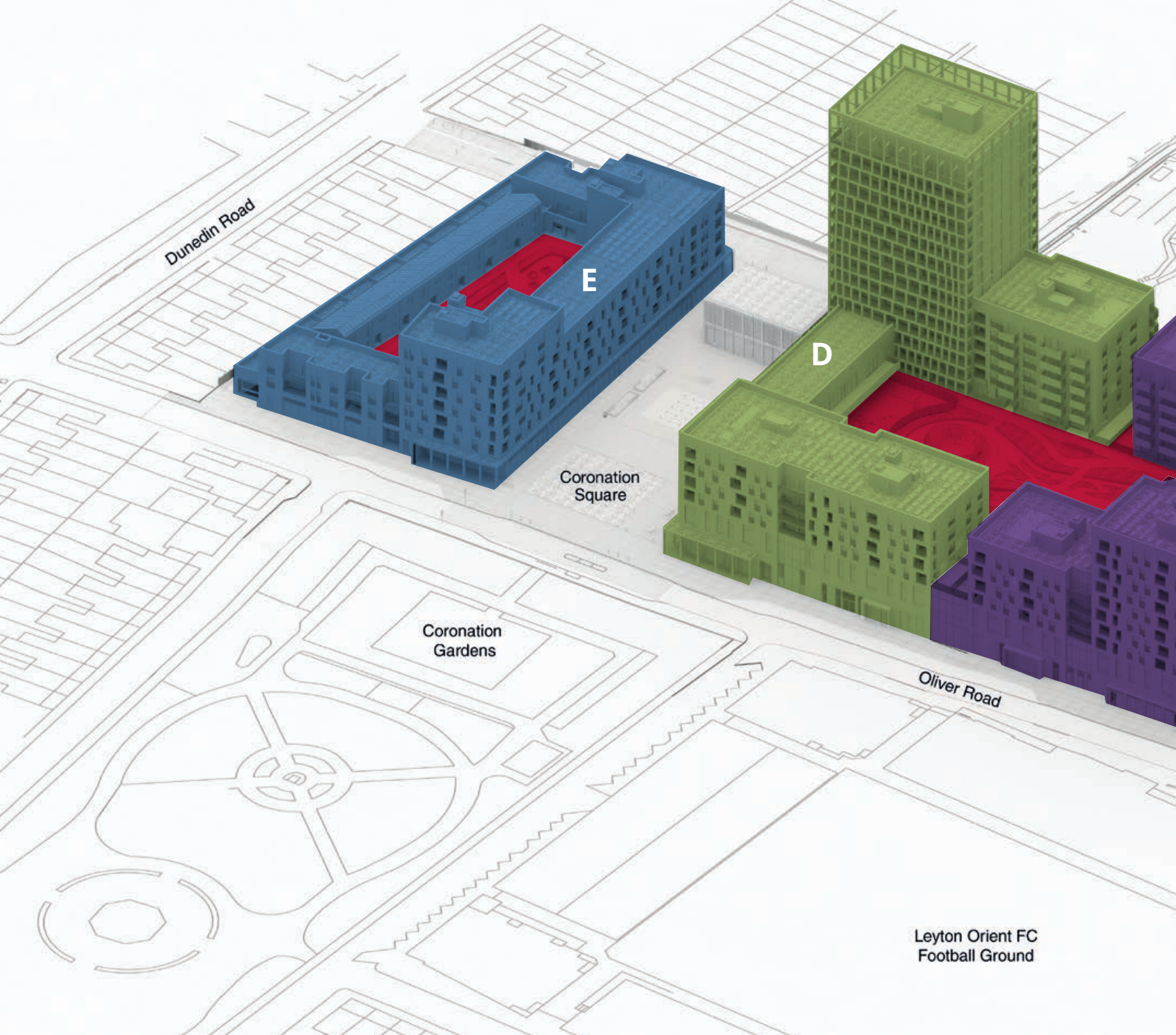
NB Flow restrictors included to reduce water consumption. Standard specifications are correct at time of broadcast, but are subject to change without notice. Please contact the Sales Executive for further information. *Located within hall cupboard to certain plots. Please speak to a Sales Executive for further information. **Standard sitting, no surge protection. †Please refer to the Sales Executive for specific details. ††Size is approximate, variations do occur due to layout restrictions. These are the only options available and are subject to stage of construction. We will not be able to accommodate any changes to the specification or layout other than the options available. Options are correct at time of broadcast, but are subject to plot size. Please speak to a Sales Executive for further details. Images are of the light specification and are of the light colour palette. Image may include optional upgrades at additional cost. January 2024.



Photography of Coronation Square show apartment.



Photography of Coronation Square show apartment.



Development layout

**MORE THAN A VISION FOR LEYTON,
A PLACE DESIGNED FOR LIFE.**

With its rich choice of apartments, each home at Coronation Square combines contemporary design with beautiful living space and looks out onto an exciting architectural neighbourhood designed to harmonise with the local surroundings.



PHASE 1

Block C
Plots 410–429

Block D
Plots 68–205

Block E
Plots 1–67

**Communal gardens
and play area**

PHASE 2

Block A
Plots 660, 665 & 722–735

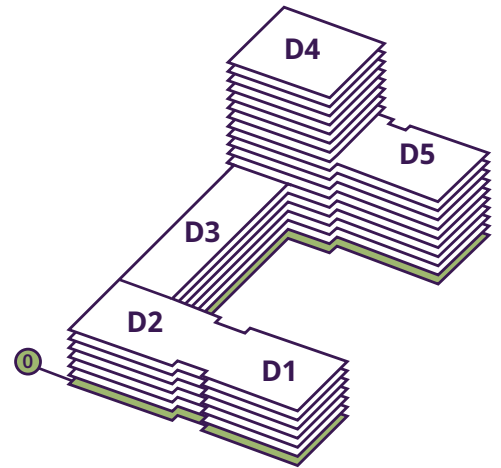
Block B
Plots 457–641

This development layout does not show details of gradients of land, boundary treatments, local authority street lighting or landscaping. It is our intention to build in accordance with this layout. However, there may be occasions when the property designs, boundaries, landscaping and positions of roads and footpaths change as the development proceeds. Please check the details of your chosen property with your Sales Executive prior to reservation.

25

BLOCK D

Ground Floor



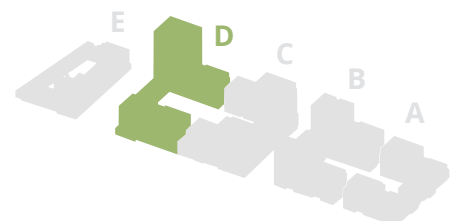
We build for the future

A ground-floor café will open onto the square, and will include the NHS Health Hub, a sports centre and a children's nursery.

The residents' concierge and lounge makes Coronation Square the perfect place to call home. Within Block D3, the sports centre is located on the ground, first and second floors with the children's nursery located on floors three to five.



- Resident's Space
- Non Resident's Space
- Commercial Space



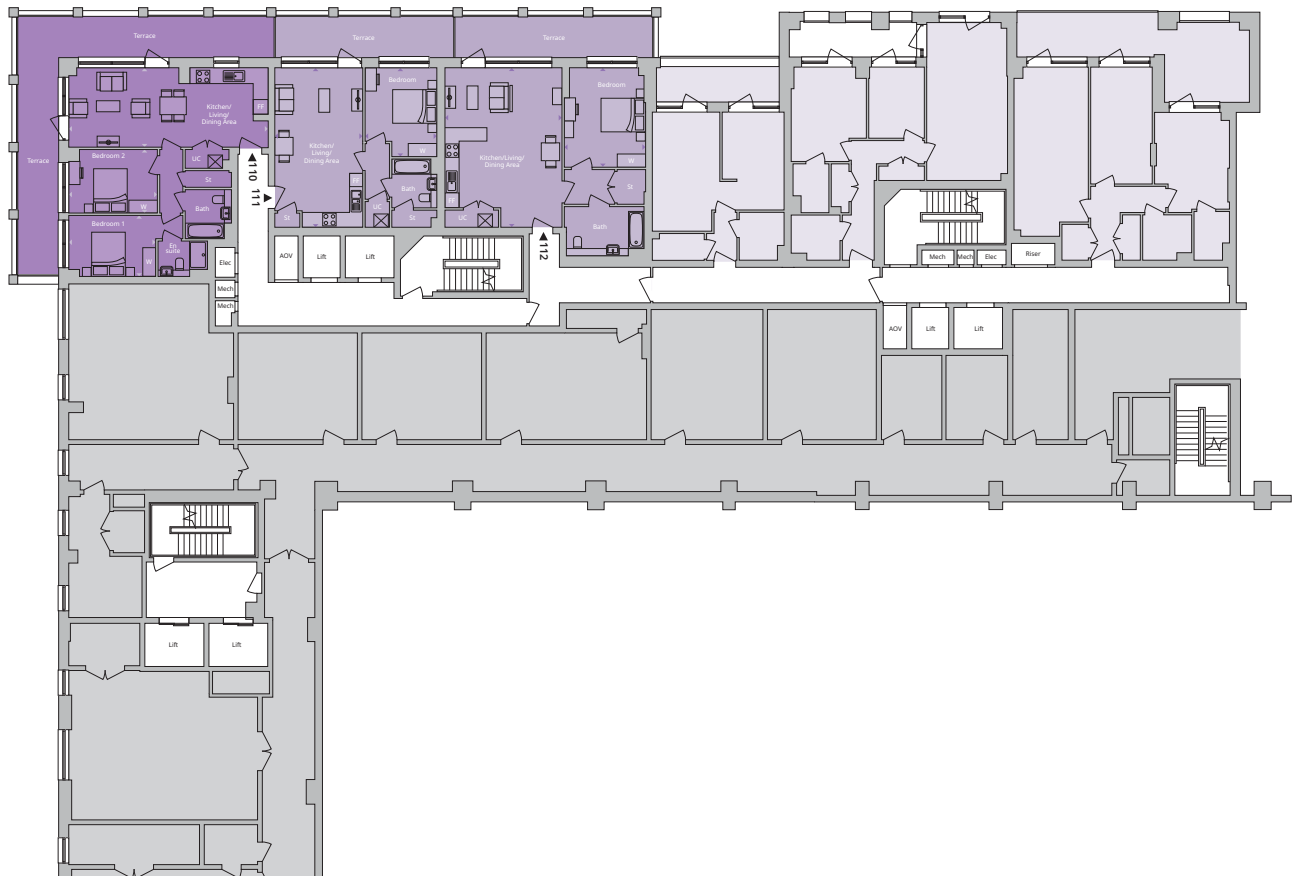
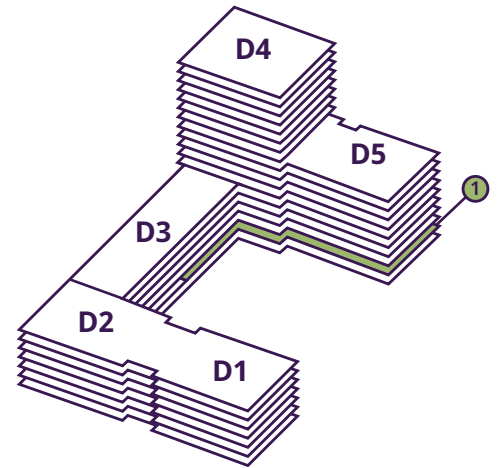


Floor plans depict a typical layout of this apartment type. For exact plot specification, details of external and internal finishes, dimensions and floor plan differences consult your Sales Executive. All dimensions are + or - 50mm and floor plans are not shown to scale. The kitchen layout and furniture positions are for indicative purposes only. Reduction to the ceiling heights in the kitchen/living/dining area from 2.5m to 2.4m on selected plots.

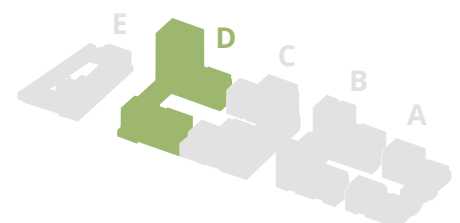
BLOCK D

First Floor

NORTH WEST



- 1 bedroom
- 2 bedroom
- Affordable housing
- Commercial area
- FF** Fridge freezer
- St** Storage
- UC** Utility cupboard
- W** Wardrobe



1 BED APARTMENTS

Plot 111 Type CD02

Kitchen/Living/Dining Area max.

7.20m × 4.00m 23'7" × 13'0"

Bedroom max.

4.00m × 3.30m 13'2" × 10'8"

Total: 52.60 sq. m. | 566 sq. ft.

Plot 112 Type CD31

Kitchen/Living/Dining Area

6.30m min. × 5.30m max. 20'9" min. × 17'4" max.

Bedroom max.

4.50m × 3.70m 14'7" × 12'1"

Total: 69.90 sq. m. | 752 sq. ft.

2 BED APARTMENT

Plot 110 Type CD01

Kitchen/Living/Dining Area max.

8.90m × 3.60m 29'1" × 11'10"

Bedroom 1

3.90m min. × 2.80m max. 12'10" min. × 9'0" max.

Bedroom 2

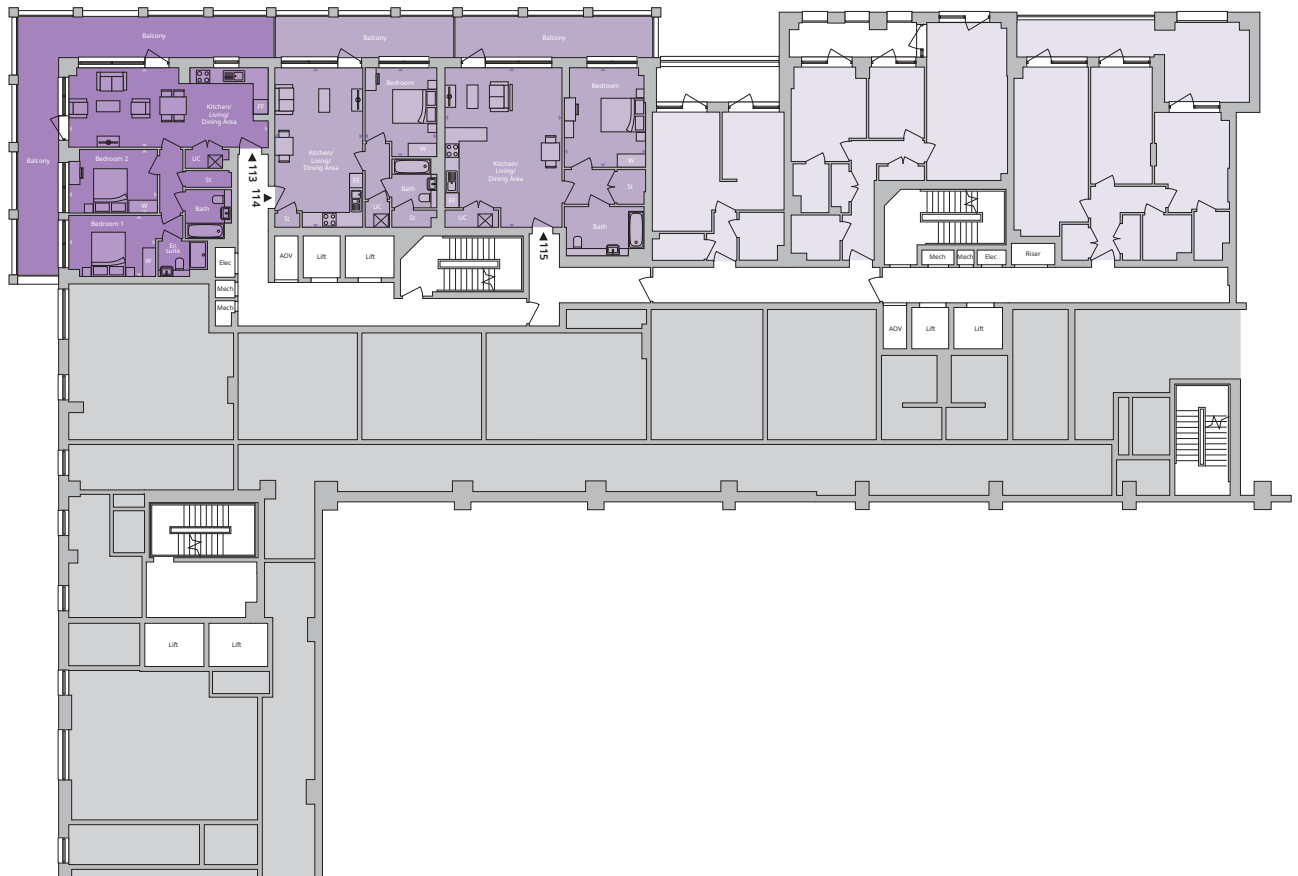
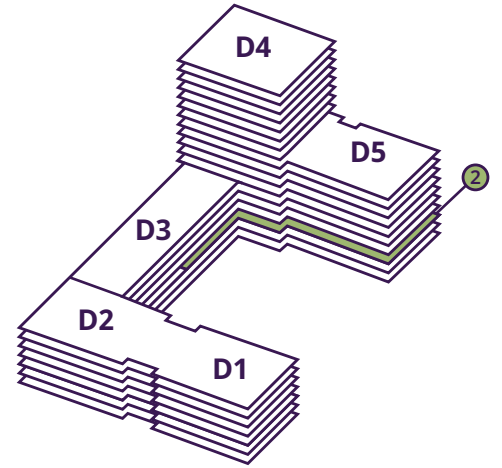
4.00m × 2.90m 13'2" × 9'5"

Total: 72.50 sq. m. | 780 sq. ft.

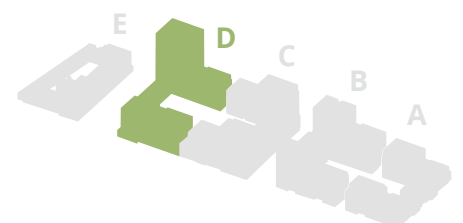
BLOCK D

Second Floor

NORTH WEST



- 1 bedroom
- 2 bedroom
- Affordable housing
- Commercial area
- FF Fridge freezer
- St Storage
- UC Utility cupboard
- W Wardrobe



1 BED APARTMENTS

Plot 114 Type CD02

Kitchen/Living/Dining Area max.

7.20m × 4.00m 23'7" × 13'0"

Bedroom max.

4.00m × 3.30m 13'2" × 10'8"

Total: 52.60 sq. m. | 566 sq. ft.

Plot 115 Type CD31

Kitchen/Living/Dining Area

6.30m min. × 5.30m max. 20'9" min. × 17'4" max.

Bedroom max.

4.80m × 3.60m 15'9" × 11'11"

Total: 69.90 sq. m. | 752 sq. ft.

2 BED APARTMENT

Plot 113 Type CD01

Kitchen/Living/Dining Area max.

8.90m × 3.60m 29'1" × 11'10"

Bedroom 1

3.90m min. × 2.80m max. 12'10" min. × 9'0" max.

Bedroom 2

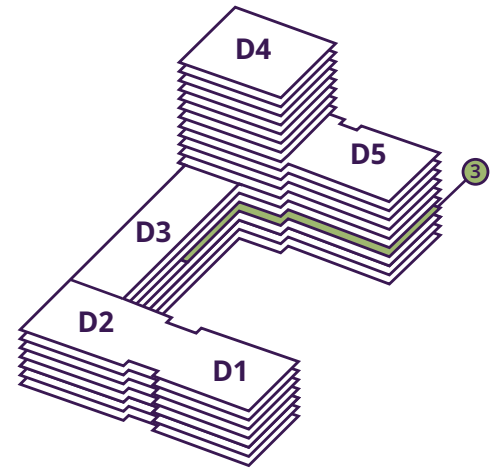
4.00m × 2.90m 13'2" × 9'5"

Total: 72.50 sq. m. | 780 sq. ft.

BLOCK D

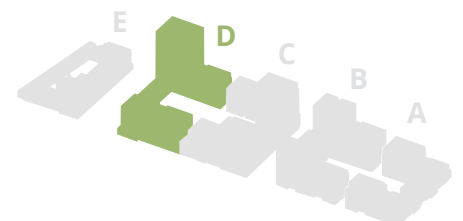
Third Floor

NORTH WEST



- 1 bedroom
- 2 bedroom
- Affordable housing
- Commercial area

- FF Fridge freezer
- P Pantry
- St Storage
- UC Utility cupboard
- W Wardrobe



1 BED APARTMENTS

Plot 117 Type CD02

Kitchen/Living/Dining Area max.

7.20m × 4.00m 23'7" × 13'0"

Bedroom max.

4.00m × 3.30m 13'2" × 10'8"

Total: 52.60 sq. m. | 566 sq. ft.

Plot 118 Type CD31

Kitchen/Living/Dining Area

6.30m × 5.30m 20'9" × 17'4"

Bedroom max.

4.50m × 3.70m 14'7" × 12'1"

Total: 69.90 sq. m. | 752 sq. ft.

Plot 119 Type CD18

Kitchen/Living/Dining Area max.

7.00m × 3.60m 22'9" × 11'8"

Bedroom max.

4.90m × 3.20m 16'1" × 10'4"

Total: 53.20 sq. m. | 572 sq. ft.

Plot 120 Type CD35

Kitchen/Living/Dining Area max.

7.00m × 3.60m 23'7" × 11'10"

Bedroom max.

4.00m × 3.60m 13'2" × 11'10"

Total: 52.60 sq. m. | 566 sq. ft.

2 BED APARTMENTS

Plot 116 Type CD01

Kitchen/Living/Dining Area max.

8.90m × 3.60m 29'1" × 11'10"

Bedroom 1

3.90m min. × 2.80m max. 12'10" min. × 9'0" max.

Bedroom 2

4.00m × 2.90m 13'2" × 9'5"

Total: 72.50 sq. m. | 780 sq. ft.

Plot 121 Type CD01

Kitchen/Living/Dining Area max.

8.90m × 3.60m 29'1" × 11'10"

Bedroom 1

3.90m min. × 2.80m max. 12'10" min. × 9'0" max.

Bedroom 2

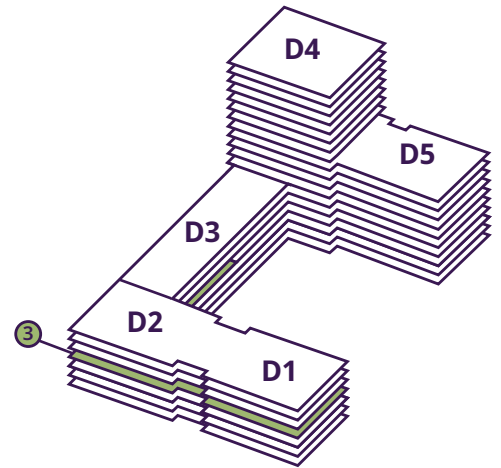
4.00m × 2.90m 13'2" × 9'5"

Total: 72.50 sq. m. | 780 sq. ft.

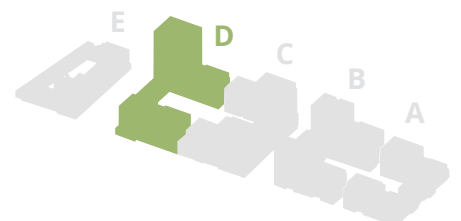
BLOCK D

Third Floor

NORTH EAST



- 1 bedroom
- 2 bedroom
- 3 bedroom
- Affordable housing
- Commercial area
- FF Fridge freezer
- P Pantry
- St Storage
- UC Utility cupboard
- W Wardrobe
- WC Washroom
- Indicative wardrobe space



1 BED APARTMENTS

Plot 69 Type CD08

Kitchen/Living/Dining Area max.

6.50m × 5.70m 21'5" × 18'9"

Bedroom max.

4.50m × 3.10m 14'9" × 10'0"

Total: 54.90 sq. m. | 591 sq. ft.

Plot 72 Type CD04

Kitchen/Living/Dining Area max.

5.40m × 5.00m 17'4" × 16'4"

Bedroom max.

4.40m × 3.00m 14'6" × 9'10"

Total: 50.60 sq. m. | 545 sq. ft.

Plot 92 Type CD08

Kitchen/Living/Dining Area max.

6.50m × 5.70m 21'5" × 18'9"

Bedroom max.

4.50m × 3.10m 14'9" × 10'0"

Total: 54.90 sq. m. | 591 sq. ft.

2 BED APARTMENTS

Plot 68 Type CD33

Kitchen/Living/Dining Area max.

5.90m × 4.70m 19'3" × 15'5"

Bedroom 1

4.20m × 3.00m 13'11" × 9'9"

Bedroom 2

4.20m × 2.80m 13'11" × 9'1"

Total: 73.70 sq. m. | 793 sq. ft.

Plot 71 Type CD34

Kitchen/Living/Dining Area max.

6.10m × 4.00m 19'11" × 13'1"

Bedroom 1

4.40m × 3.40m 14'6" × 11'1"

Bedroom 2

4.90m × 2.80m 16'2" × 9'0"

Total: 74.70 sq. m. | 566 sq. ft.

Plot 93 Type CD17

Kitchen/Living/Dining Area max.

5.90m × 4.70m 19'3" × 15'7"

Bedroom 1

3.70m min. × 3.50m max. 12'0" min. × 11'5" max.

Bedroom 2 max.

4.30m × 2.80m 14'0" × 9'1"

Total: 72.00 sq. m. | 775 sq. ft.

3 BED APARTMENTS

Plot 70 Type CD23

Kitchen/Living/Dining Area max.

10.00m × 4.07m 32'10" × 13'4"

Bedroom 1 max.

5.12m × 4.05m 16'9" × 13'3"

Bedroom 2

5.37m × 3.00m 17'7" × 9'10"

Bedroom 3

3.86m × 2.78m 12'8" × 9'1"

Total: 119.50 sq. m. | 1,286 sq. ft.

Plot 91 Type CD23

Kitchen/Living/Dining Area max.

10.00m × 4.07m 32'10" × 13'4"

Bedroom 1 max.

5.12m × 4.05m 16'9" × 13'3"

Bedroom 2

5.37m × 3.00m 17'7" × 9'10"

Bedroom 3

3.86m × 2.78m 12'8" × 9'1"

Total: 119.50 sq. m. | 1,286 sq. ft.

Plot 94 Type CD13

Kitchen/Living/Dining Area max.

6.60m × 6.00m 21'6" × 19'7"

Bedroom 1 max.

4.40m × 4.10m 14'4" × 13'4"

Bedroom 2 max.

4.80m × 3.70m 15'8" × 12'2"

Bedroom 3

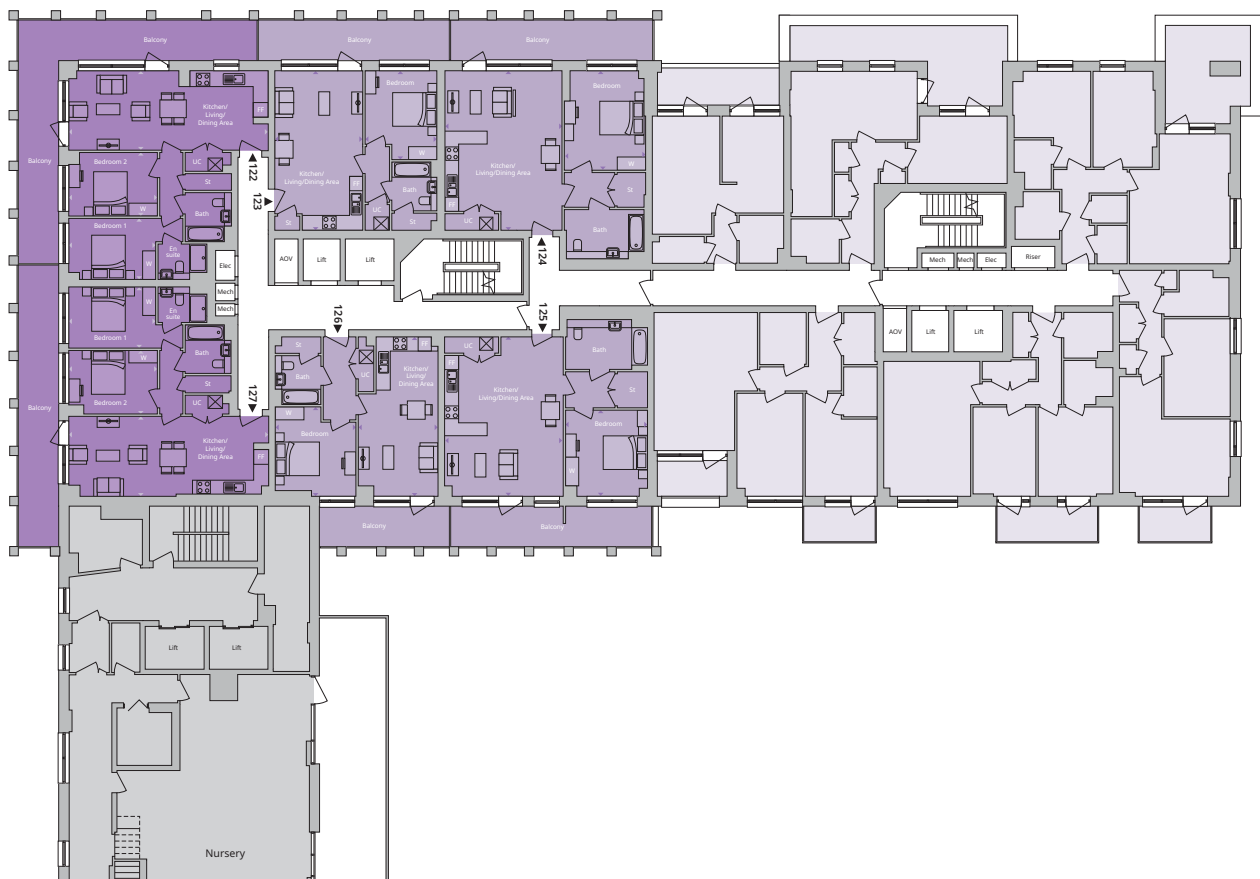
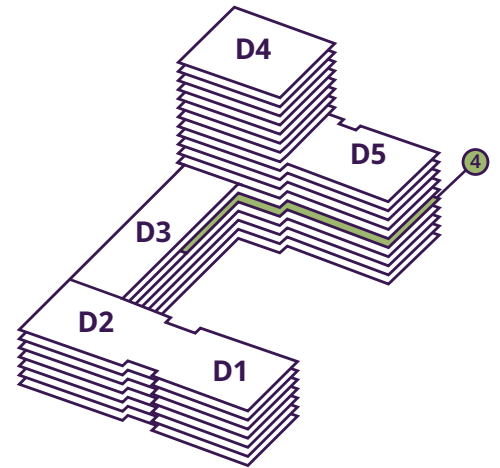
4.80m × 2.60m 15'8" × 8'5"

Total: 118.20 sq. m. | 1,272 sq. ft.

BLOCK D

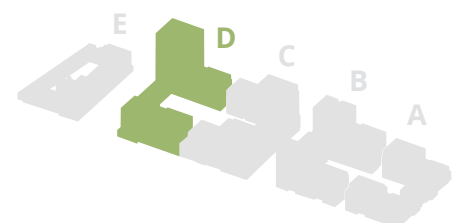
Fourth Floor

NORTH WEST



- 1 bedroom
- 2 bedroom
- Affordable housing
- Commercial area

- FF Fridge freezer
- St Storage
- UC Utility cupboard
- W Wardrobe
- Indicative wardrobe space



1 BED APARTMENTS

Plot 123 Type CD02

Kitchen/Living/Dining Area max.

7.20m × 4.00m 23'7" × 13'0"

Bedroom max.

4.00m × 3.30m 13'2" × 10'8"

Total: 52.60 sq. m. | 566 sq. ft.

Plot 124 Type CD31

Kitchen/Living/Dining Area

6.30m min. × 5.30m max. 20'9" min. × 17'4" max.

Bedroom max.

4.50m × 3.70m 14'7" × 12'1"

Total: 69.90 sq. m. | 752 sq. ft.

Plot 125 Type CD31

Kitchen/Living/Dining Area

6.30m min. × 5.30m max. 20'9" min. × 17'4" max.

Bedroom max.

4.50m × 3.70m 14'7" × 12'1"

Total: 68.60 sq. m. | 738 sq. ft.

Plot 126 Type CD35

Kitchen/Living/Dining Area max.

7.20m × 3.60m 23'7" × 11'10"

Bedroom max.

4.00m × 3.60m 13'2" × 11'10"

Total: 52.60 sq. m. | 566 sq. ft.

2 BED APARTMENTS

Plot 122 Type CD01

Kitchen/Living/Dining Area max.

8.90m × 3.60m 29'1" × 11'10"

Bedroom 1

3.90m min. × 2.80m max. 12'10" min. × 9'0" max.

Bedroom 2

4.00m × 2.90m 13'2" × 9'5"

Total: 72.50 sq. m. | 780 sq. ft.

Plot 127 Type CD01

Kitchen/Living/Dining Area max.

8.90m × 3.60m 29'1" × 11'10"

Bedroom 1

3.90m min. × 2.80m max. 12'10" min. × 9'0" max.

Bedroom 2

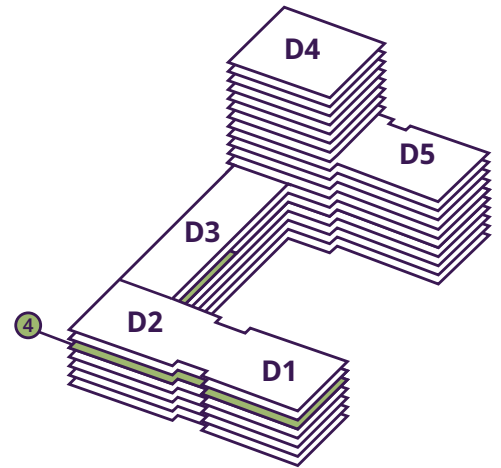
4.00m × 2.90m 13'2" × 9'5"

Total: 72.50 sq. m. | 780 sq. ft.

BLOCK D

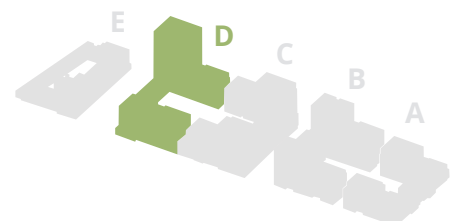
Fourth Floor

NORTH EAST



- 1 bedroom
- 2 bedroom
- 3 bedroom
- Commercial area

- FF Fridge freezer
- P Pantry
- St Storage
- UC Utility cupboard
- W Wardrobe
- WC Washroom
- Indicative wardrobe space



1 BED APARTMENTS

Plot 74 Type CD08

Kitchen/Living/Dining Area max.

6.50m × 5.70m 21'5" × 18'9"

Bedroom max.

4.50m × 3.10m 14'9" × 10'0"

Total: 54.90 sq. m. | 591 sq. ft.

Plot 76 Type CD06

Kitchen/Living/Dining Area max.

8.25m × 3.34m 27'1" × 10'11"

Bedroom

4.67m × 2.85m 15'4" × 9'4"

Total: 51.10 sq. m. | 550 sq. ft.

Plot 78 Type CD04

Kitchen/Living/Dining Area max.

5.40m × 5.00m 17'4" × 16'4"

Bedroom max.

4.40m × 3.00m 14'6" × 9'10"

Total: 50.60 sq. m. | 545 sq. ft.

Plot 96 Type CD08

Kitchen/Living/Dining Area max.

6.50m × 5.70m 21'5" × 18'9"

Bedroom max.

4.50m × 3.10m 14'9" × 10'0"

Total: 54.90 sq. m. | 591 sq. ft.

Plot 99 Type CD06

Kitchen/Living/Dining Area max.

8.25m × 3.34m 27'1" × 10'11"

Bedroom

4.67m × 2.85m 15'4" × 9'4"

Total: 51.10 sq. m. | 550 sq. ft.

2 BED APARTMENTS

Plot 73 Type CD33

Kitchen/Living/Dining Area max.

5.90m × 4.70m 19'3" × 15'5"

Bedroom 1

4.20m × 3.00m 13'11" × 9'9"

Bedroom 2

4.20m × 2.80m 13'11" × 9'1"

Total: 73.70 sq. m. | 793 sq. ft.

Plot 75 Type CD07

Kitchen/Living/Dining Area max.

8.20m × 3.60m 27'0" × 11'11"

Bedroom 1 max.

4.40m × 3.10m 14'7" × 10'1"

Bedroom 2

3.00m min. × 2.90m max. 9'10" min. × 9'5" max.

Total: 72.80 sq. m. | 784 sq. ft.

Plot 77 Type CD34

Kitchen/Living/Dining Area max.

6.10m × 4.00m 19'11" × 13'1"

Bedroom 1

4.40m × 3.40m 14'6" × 11'1"

Bedroom 2

4.90m × 2.80m 16'2" × 9'0"

Total: 74.70 sq. m. | 804 sq. ft.

Plot 95 Type CD07

Kitchen/Living/Dining Area max.

8.20m × 3.60m 27'0" × 11'11"

Bedroom 1 max.

4.40m × 3.10m 14'7" × 10'1"

Bedroom 2

3.00m min. × 2.90m max. 9'10" min. × 9'5" max.

Total: 72.80 sq. m. | 784 sq. ft.

Plot 97 Type CD17

Kitchen/Living/Dining Area max.

5.90m × 4.70m 19'3" × 15'7"

Bedroom 1

3.70m min. × 3.50m max. 12'0" min. × 11'5" max.


Bedroom 2 max.

4.30m × 2.80m 14'0" × 9'1"

Total: 72.00 sq. m. | 775 sq. ft.

3 BED APARTMENT

Plot 98 Type CD13

Kitchen/Living/Dining Area max. 

6.60m × 6.00m 21'6" × 19'7"

Bedroom 1 max.

4.40m × 4.10m 14'4" × 13'4"

Bedroom 2 max.

4.80m × 3.70m 15'8" × 12'2"

Bedroom 3

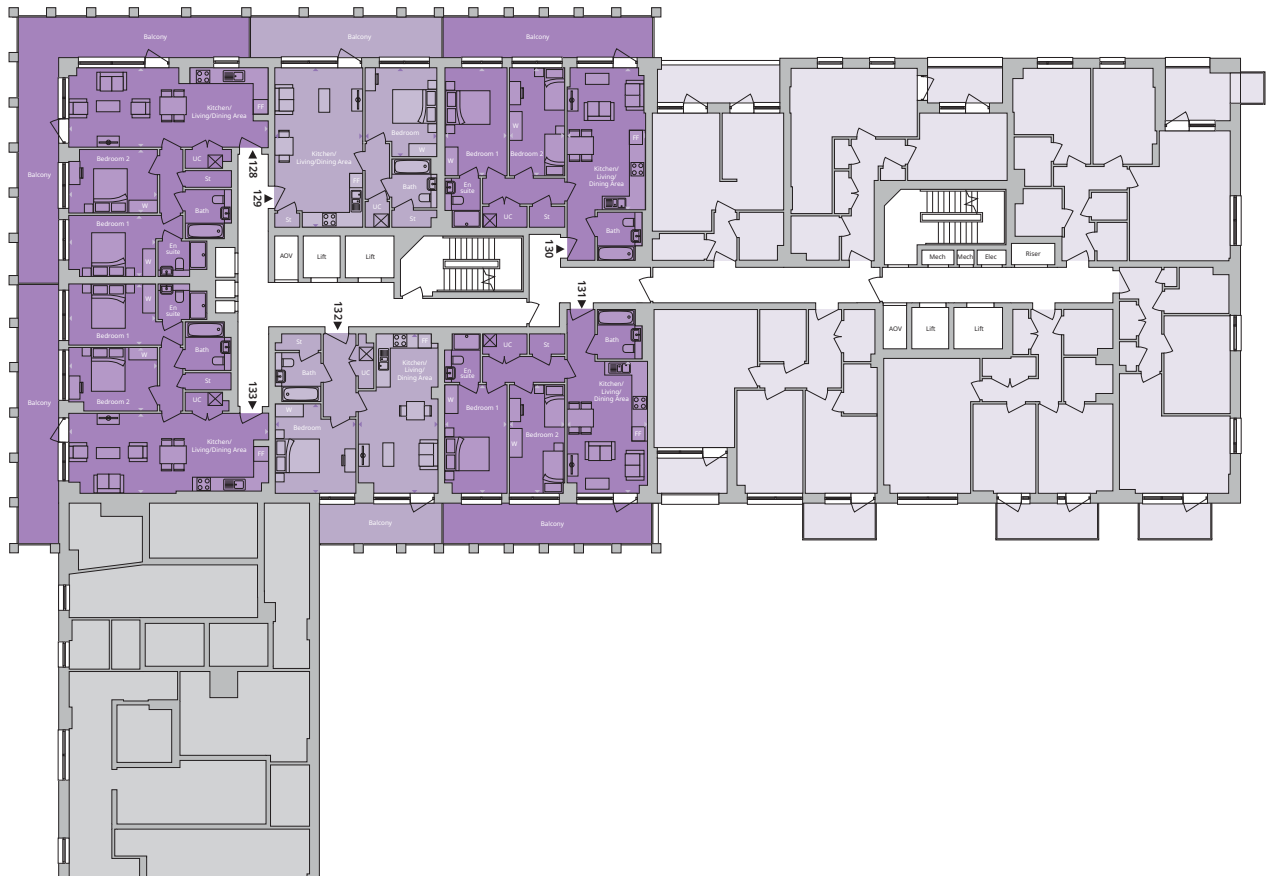
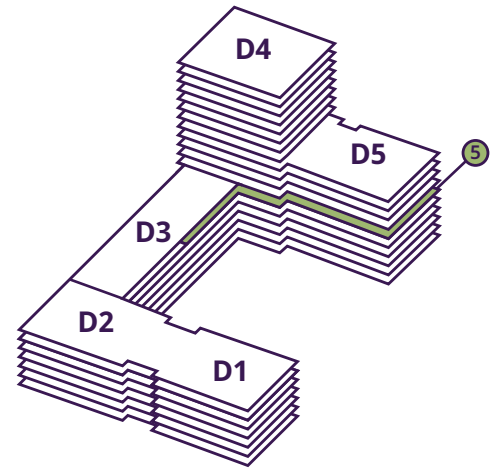
4.80m × 2.60m 15'8" × 8'5"

Total: 118.20 sq. m. | 1,272 sq. ft.

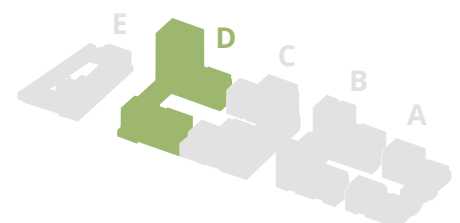
BLOCK D

Fifth Floor

NORTH WEST



- 1 bedroom
- 2 bedroom
- Affordable housing
- Commercial area
- FF** Fridge freezer
- St** Storage
- UC** Utility cupboard
- W** Wardrobe
- Indicative wardrobe space



1 BED APARTMENTS

Plot 129 Type CD02

Kitchen/Living/Dining Area max.

7.20m × 4.00m 23'7" × 13'0"

Bedroom max.

4.00m × 3.30m 13'2" × 10'8"

Total: 52.60 sq. m. | 566 sq. ft.

Plot 132 Type CD35

Kitchen/Living/Dining Area max.

7.20m × 3.60m 23'7" × 11'10"

Bedroom max.

4.00m × 3.60m 13'2" × 11'10"

Total: 52.60 sq. m. | 566 sq. ft.

2 BED APARTMENTS

Plot 128 Type CD01

Kitchen/Living/Dining Area max.

8.90m × 3.60m 29'1" × 11'10"

Bedroom 1

3.90m min. × 2.80m max. 12'10" min. × 9'0" max.

Bedroom 2

4.00m × 2.90m 13'2" × 9'5"

Total: 72.50 sq. m. | 780 sq. ft.

Plot 130 Type CD39

Kitchen/Living/Dining Area

6.00m × 3.70m 19'6" × 12'1"

Bedroom 1 max.

4.90m × 2.80m 16'1" × 9'11"

Bedroom 2

4.90m × 2.50m max. 16'1" × 8'3" max.

Total: 70.8 sq. m. | 762 sq. ft.

Plot 131 Type CD39

Kitchen/Living/Dining Area

6.00m × 3.70m 19'6" × 12'1"

Bedroom 1 max.

4.90m × 2.80m 16'1" × 9'11"

Bedroom 2

4.90m × 2.50m max. 16'1" × 8'3" max.

Total: 70.0 sq. m. | 753 sq. ft.

Plot 133 Type CD01

Kitchen/Living/Dining Area max.

8.90m × 3.60m 29'1" × 11'10"

Bedroom 1

3.90m min. × 2.80m max. 12'10" min. × 9'0" max.

Bedroom 2

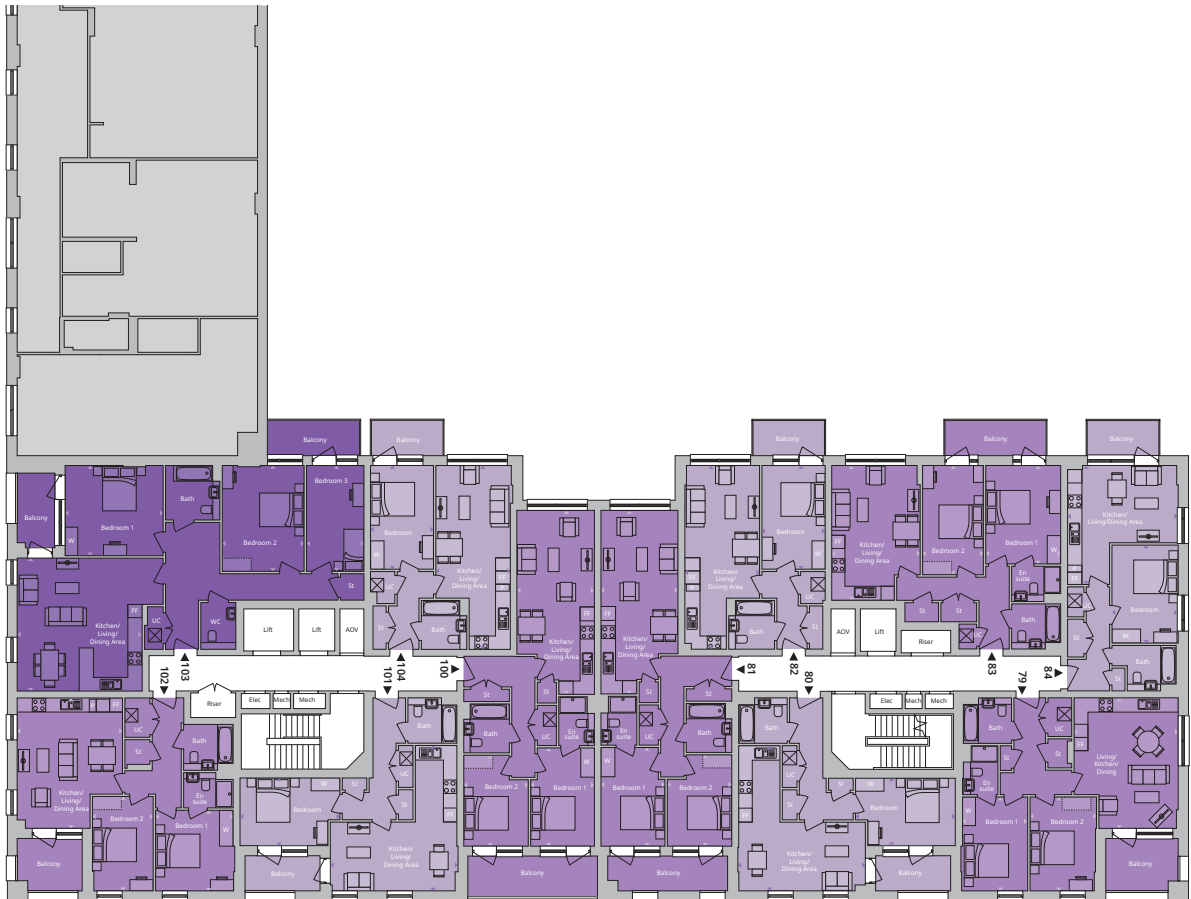
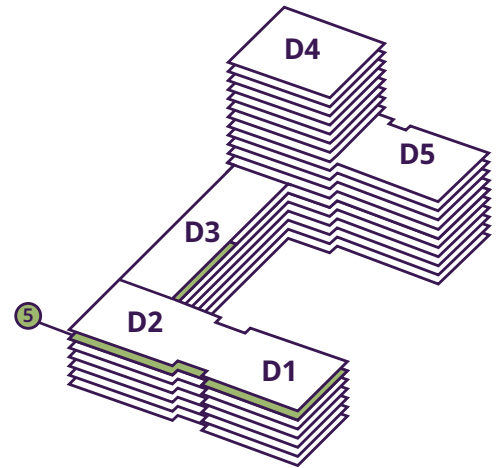
4.00m × 2.90m 13'2" × 9'5"

Total: 72.50 sq. m. | 780 sq. ft.

BLOCK D

Fifth Floor

NORTH EAST



FF Fridge freezer

P Pantry

St Storage

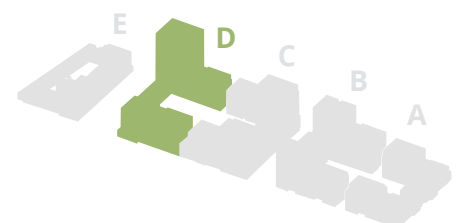
UC Utility cupboard

W Wardrobe

WC Washroom

--- Indicative wardrobe space

- 1 bedroom
- 2 bedroom
- 3 bedroom
- Commercial area



1 BED APARTMENTS

Plot 80 Type CD08

Kitchen/Living/Dining Area max.

6.50m × 5.70m 21'5" × 18'9"

Bedroom max.

4.50m × 3.10m 14'9" × 10'0"

Total: 54.90 sq. m. | 591 sq. ft.

Plot 82 Type CD06

Kitchen/Living/Dining Area max.

8.25m × 3.34m 27'1" × 10'11"

Bedroom

4.67m × 2.85 m 15'4" × 9'4"

Total: 51.10 sq. m. | 550 sq. ft.

Plot 84 Type CD04

Kitchen/Living/Dining Area max.

5.40m × 5.00m 17'4" × 16'4"

Bedroom max.

4.40m × 3.00m 14'6" × 9'10"

Total: 50.60 sq. m. | 545 sq. ft.

Plot 101 Type CD08

Kitchen/Living/Dining Area max.

6.50m × 5.70m 21'5" × 18'9"

Bedroom max.

4.50m × 3.10m 14'9" × 10'0"

Total: 54.90 sq. m. | 591 sq. ft.

Plot 104 Type CD06

Kitchen/Living/Dining Area max.

8.25m × 3.34m 27'1" × 10'11"

Bedroom

4.67m × 2.85m 15'4" × 9'4"

Total: 51.10 sq. m. | 550 sq. ft.

2 BED APARTMENTS

Plot 79 Type CD33

Kitchen/Living/Dining Area max.

5.90m × 4.70m 19'3" × 15'5"

Bedroom 1

4.20m × 3.00m 13'11" × 9'9"

Bedroom 2

4.20m × 2.80m 13'11" × 9'1"

Total: 73.70 sq. m. | 793 sq. ft.

Plot 81 Type CD07

Kitchen/Living/Dining Area max.

8.20m × 3.60m 27'0" × 11'11"

Bedroom 1 max.

4.40m × 3.10m 14'7" × 10'1"

Bedroom 2

3.00m min. × 2.90m max. 9'10" min. × 9'5" max.

Total: 72.80 sq. m. | 784 sq. ft.

Plot 83 Type CD34

Kitchen/Living/Dining Area max.

6.10m × 4.00m 19'11" × 13'1"

Bedroom 1

4.40m × 3.40m 14'6" × 11'1"

Bedroom 2

4.90m × 2.80m 16'2" × 9'0"

Total: 74.70 sq. m. | 804 sq. ft.

Plot 100 Type CD07

Kitchen/Living/Dining Area max.

8.20m × 3.60m 27'0" × 11'11"

Bedroom 1 max.

4.40m × 3.10m 14'7" × 10'1"

Bedroom 2

3.00m min. × 2.90m max. 9'10" min. × 9'5" max.

Total: 72.80 sq. m. | 784 sq. ft.

Plot 102 Type CD17

Kitchen/Living/Dining Area max.

5.90m × 4.70m 19'3" × 15'7"

Bedroom 1

3.70m min. × 3.50m max. 12'0" min. × 11'5" max.

Bedroom 2 max.

4.30m × 2.80m 14'0" × 9'1"

Total: 72.00 sq. m. | 775 sq. ft.

3 BED APARTMENT

Plot 103 Type CD13

Kitchen/Living/Dining Area max.

6.60m × 6.00m 21'6" × 19'7"

Bedroom 1 max.

4.40m × 4.10m 14'4" × 13'4"

Bedroom 2 max.

4.80m × 3.70m 15'8" × 12'2"

Bedroom 3

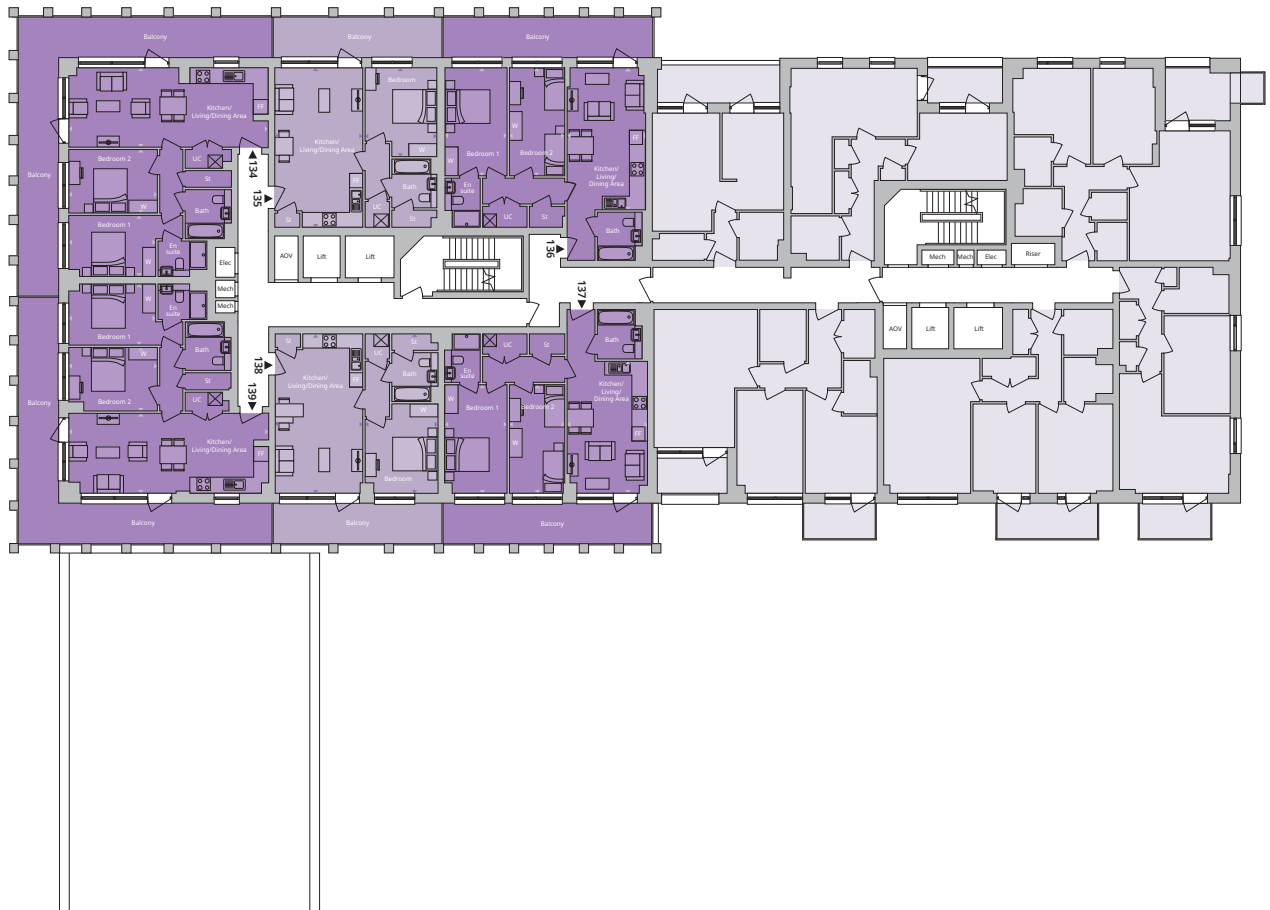
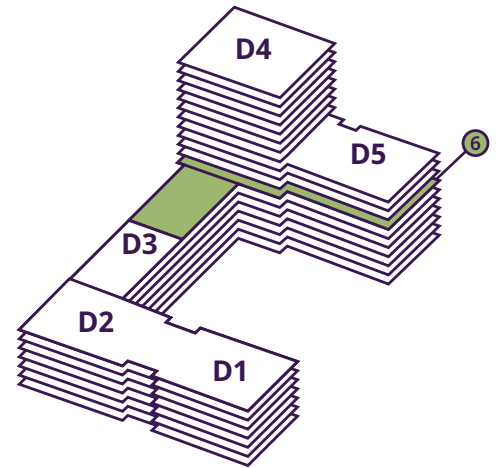
4.80m × 2.60m 15'8" × 8'5"

Total: 118.20 sq. m. | 1,272 sq. ft.

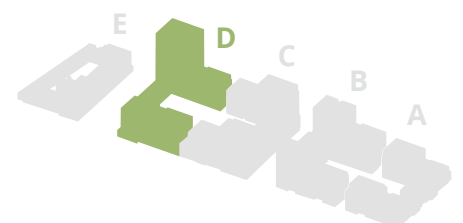
BLOCK D

Sixth Floor

NORTH WEST



- 1 bedroom
- 2 bedroom
- 3 bedroom
- Affordable housing
- Commercial area
- FF** Fridge freezer
- St** Storage
- UC** Utility cupboard
- W** Wardrobe
- Indicative wardrobe space



1 BED APARTMENTS

Plot 135 Type CD02

Kitchen/Living/Dining Area max.

7.20m × 4.00m 23'7" × 13'0"

Bedroom max.

4.00m × 3.30m 13'2" × 10'8"

Total: 52.60 sq. m. | 566 sq. ft.

Plot 138 Type CD02

Kitchen/Living/Dining Area max.

7.20m × 4.00m 23'7" × 13'0"

Bedroom max.

4.00m × 3.30m 13'2" × 10'8"

Total: 52.60 sq. m. | 566 sq. ft.

2 BED APARTMENTS

Plot 134 Type CD01

Kitchen/Living/Dining Area max.

8.90m × 3.60m 29'1" × 11'10"

Bedroom 1

3.90m min. × 2.80m max. 12'10" min. × 9'0" max.

Bedroom 2

4.00m × 2.90m 13'2" × 9'5"

Total: 72.50 sq. m. | 780 sq. ft.

Plot 136 Type CD39

Kitchen/Living/Dining Area

6.00m × 3.70m 19'6" × 12'1"

Bedroom 1 max.

4.90m × 2.80m 16'1" × 9'11"

Bedroom 2

4.90m × 2.50m max. 16'1" × 8'3" max.

Total: 70.8 sq. m. | 762 sq. ft.

Plot 137 Type CD39

Kitchen/Living/Dining Area

6.00m × 3.70m 19'6" × 12'1"

Bedroom 1 max.

4.90m × 2.80m 16'1" × 9'11"

Bedroom 2

4.90m × 2.50m max. 16'1" × 8'3" max.

Total: 70.0 sq. m. | 753 sq. ft.

Plot 139 Type CD01

Kitchen/Living/Dining Area max.

8.90m × 3.60m 29'1" × 11'10"

Bedroom 1

3.90m min. × 2.80m max. 12'10" min. × 9'0" max.

Bedroom 2

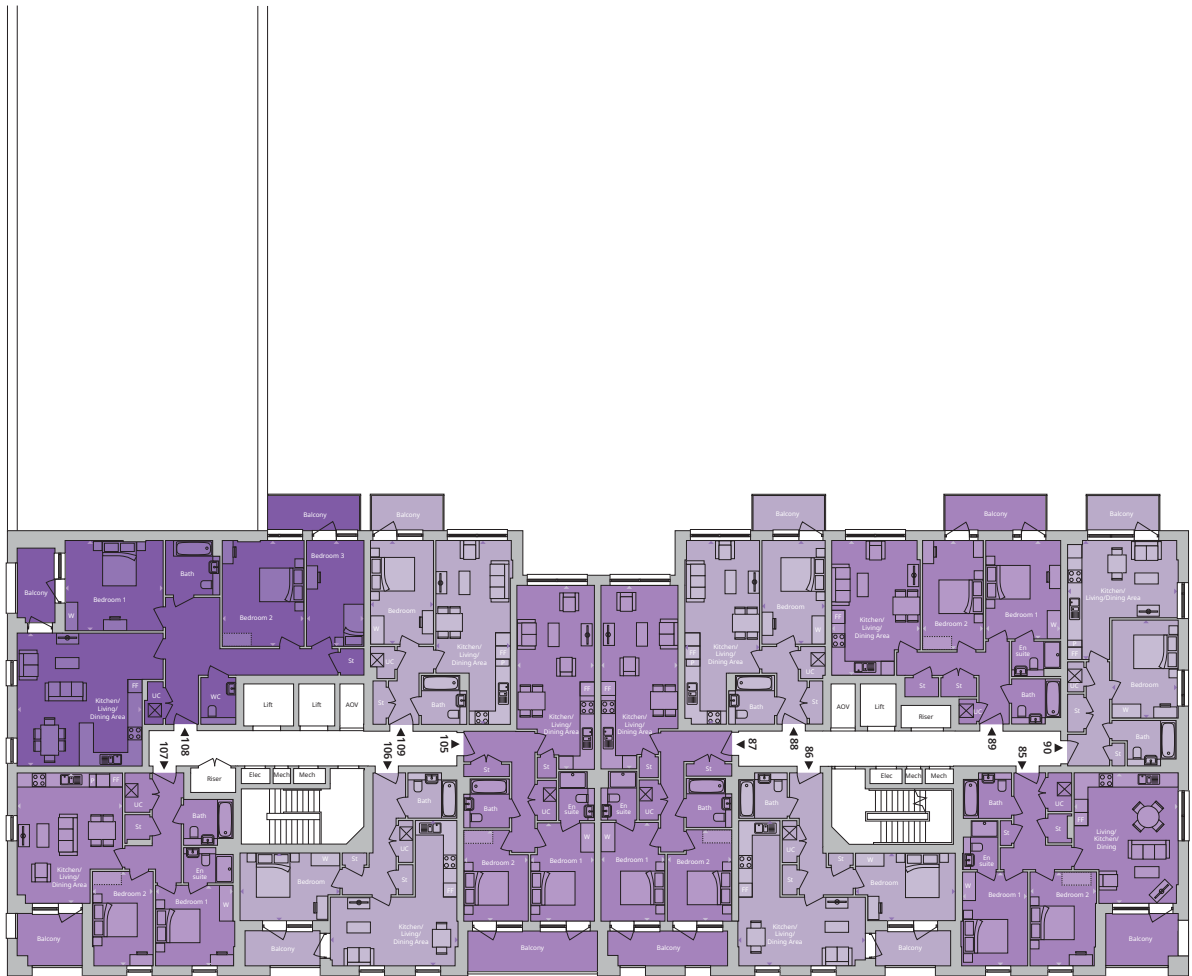
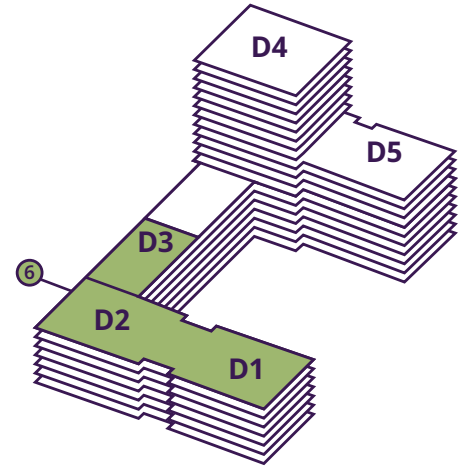
4.00m × 2.90m 13'2" × 9'5"

Total: 72.50 sq. m. | 780 sq. ft.

BLOCK D

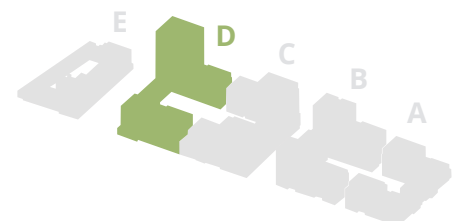
Sixth Floor

NORTH EAST



- 1 bedroom
- 2 bedroom
- 3 bedroom

- FF Fridge freezer
- P Pantry
- St Storage
- UC Utility cupboard
- W Wardrobe
- WC Washroom
- Indicative wardrobe space



1 BED APARTMENTS

Plot 86 Type CD08

Kitchen/Living/Dining Area max.

6.50m × 5.70m 21'5" × 18'9"

Bedroom max.

4.50m × 3.10m 14'9" × 10'0"

Total: 54.90 sq. m. | 591 sq. ft.

Plot 88 Type CD06

Kitchen/Living/Dining Area max.

8.25m × 3.34m 27'1" × 10'11"

Bedroom

4.67m × 2.85m 15'4" × 9'4"

Total: 51.10 sq. m. | 550 sq. ft.

Plot 90 Type CD04

Kitchen/Living/Dining Area max.

5.40m × 5.00m 17'4" × 16'4"

Bedroom max.

4.40m × 3.00m 14'6" × 9'10"

Total: 50.60 sq. m. | 545 sq. ft.

Plot 106 Type CD08

Kitchen/Living/Dining Area max.

6.50m × 5.70m 21'5" × 18'9"

Bedroom max.

4.50m × 3.10m 14'9" × 10'0"

Total: 54.90 sq. m. | 591 sq. ft.

Plot 109 Type CD06

Kitchen/Living/Dining Area max.

8.25m × 3.34m 27'1" × 10'11"

Bedroom

4.67m × 2.85m 15'4" × 9'4"

Total: 51.10 sq. m. | 550 sq. ft.

Plot 87 Type CD07

Kitchen/Living/Dining Area max.

8.20m × 3.60m 27'0" × 11'11"

Bedroom 1 max.

4.40m × 3.10m 14'7" × 10'1"

Bedroom 2

3.00m min. × 2.90m max. 9'10" min. × 9'5" max.

Total: 72.80 sq. m. | 784 sq. ft.

Plot 89 Type CD34

Kitchen/Living/Dining Area max.

6.10m × 4.00m 19'11" × 13'1"

Bedroom 1

4.40m × 3.40m 14'6" × 11'1"

Bedroom 2

4.90m × 2.80m 16'2" × 9'0"

Total: 74.70 sq. m. | 804 sq. ft.

Plot 105 Type CD07

Kitchen/Living/Dining Area max.

8.20m × 3.60m 27'0" × 11'11"

Bedroom 1 max.

4.40m × 3.10m 14'7" × 10'1"

Bedroom 2

3.00m min. × 2.90m max. 9'10" min. × 9'5" max.

Total: 72.80 sq. m. | 784 sq. ft.

Plot 107 Type CD17

Kitchen/Living/Dining Area max.

5.90m × 4.70m 19'3" × 15'7"

Bedroom 1

3.70m min. × 3.50m max. 12'0" min. × 11'5" max.

Bedroom 2 max.

4.30m × 2.80m 14'0" × 9'1"

Total: 72.00 sq. m. | 775 sq. ft.

2 BED APARTMENTS

Plot 85 Type CD33

Kitchen/Living/Dining Area max.

5.90m × 4.70m 19'3" × 15'5"

Bedroom 1

4.20m × 3.00m 13'11" × 9'9"

Bedroom 2

4.20m × 2.80m 13'11" × 9'1"

Total: 73.70 sq. m. | 793 sq. ft.

3 BED APARTMENT

Plot 108 Type CD13

Kitchen/Living/Dining Area max.

6.60m × 6.00m 21'6" × 19'7"

Bedroom 1 max.

4.40m × 4.10m 14'4" × 13'4"

Bedroom 2 max.

4.80m × 3.70m 15'8" × 12'2"

Bedroom 3

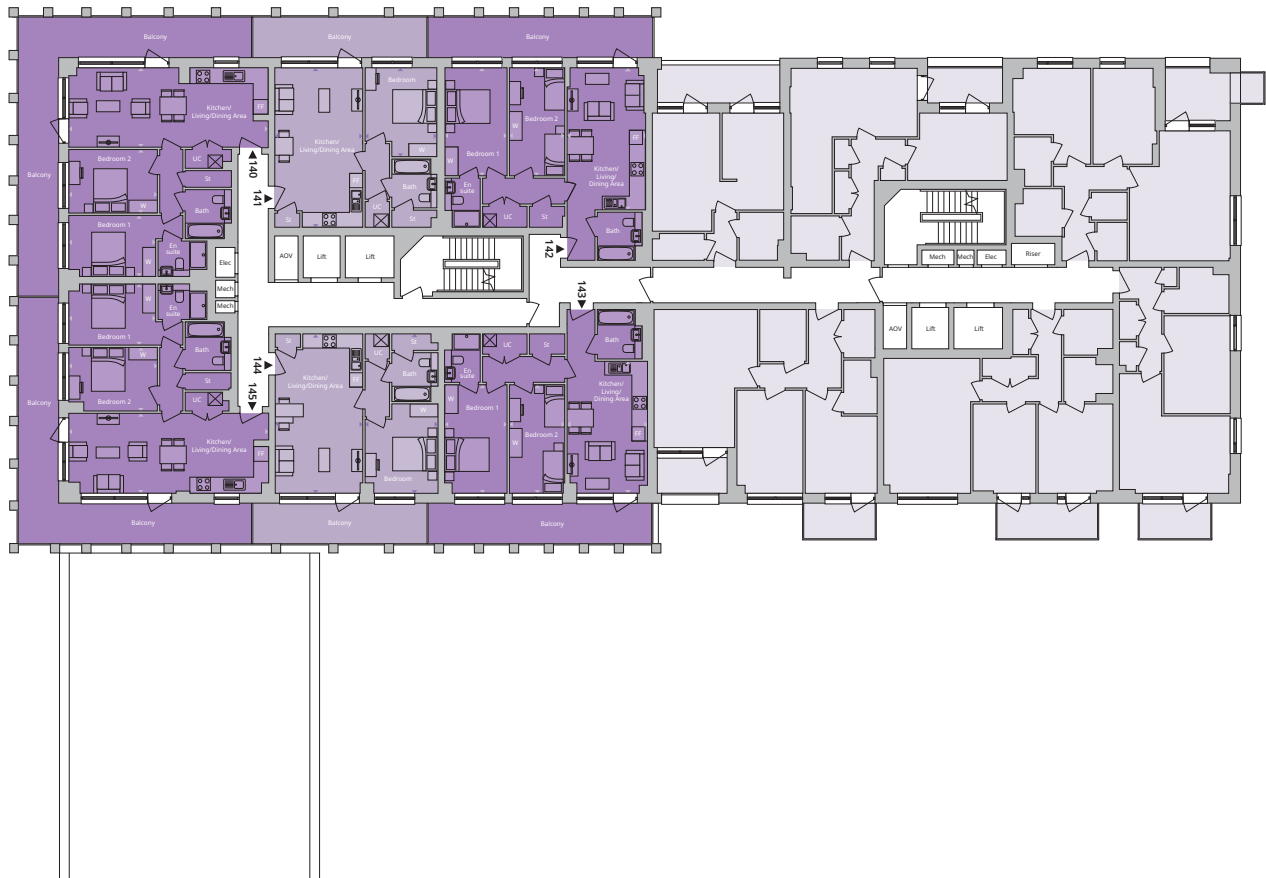
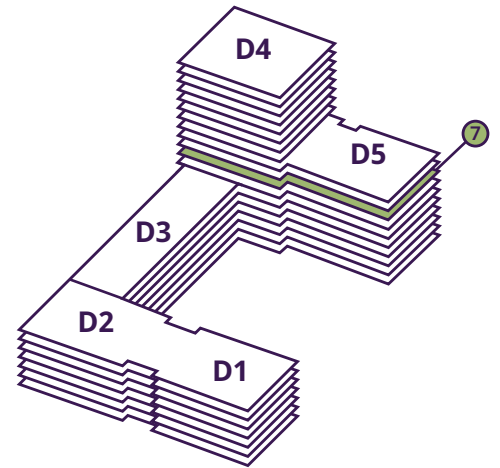
4.80m × 2.60m 15'8" × 8'5"

Total: 118.20 sq. m. | 1,272 sq. ft.

BLOCK D

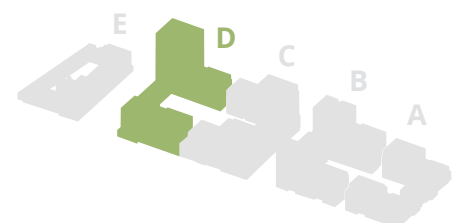
Seventh Floor

NORTH WEST



- 1 bedroom
- 2 bedroom
- Commercial area

- FF Fridge freezer
- St Storage
- UC Utility cupboard
- W Wardrobe
- Indicative wardrobe space



1 BED APARTMENTS

Plot 144 Type CD02

Kitchen/Living/Dining Area max.

7.20m × 4.00m 23'7" × 13'0"

Bedroom max.

4.00m × 3.30m 13'2" × 10'8"

Total: 52.60 sq. m. | 566 sq. ft.

Plot 141 Type CD02

Kitchen/Living/Dining Area max.

7.20m × 4.00m 23'7" × 13'0"

Bedroom max.

4.00m × 3.30m 13'2" × 10'8"

Total: 52.60 sq. m. | 566 sq. ft.

2 BED APARTMENTS

Plot 140 Type CD01

Kitchen/Living/Dining Area max.

8.90m × 3.60m 29'1" × 11'10"

Bedroom 1

3.90m min. × 2.80m max. 12'10" min. × 9'0" max.

Bedroom 2

4.00m × 2.90m 13'2" × 9'5"

Total: 72.50 sq. m. | 780 sq. ft.

Plot 142 Type CD39

Kitchen/Living/Dining Area

6.00m × 3.70m 19'6" × 12'1"

Bedroom 1 max.

4.90m × 2.80m 16'1" × 9'11"

Bedroom 2

4.90m × 2.50m max. 16'1" × 8'3" max.

Total: 70.8 sq. m. | 762 sq. ft.

Plot 143 Type CD39

Kitchen/Living/Dining Area

6.00m × 3.70m 19'6" × 12'1"

Bedroom 1 max.

4.90m × 2.80m 16'1" × 9'11"

Bedroom 2

4.90m × 2.50m max. 16'1" × 8'3" max.

Total: 70.0 sq. m. | 753 sq. ft.

Plot 145 Type CD01

Kitchen/Living/Dining Area max.

8.90m × 3.60m 29'1" × 11'10"

Bedroom 1

3.90m min. × 2.80m max. 12'10" min. × 9'0" max.

Bedroom 2

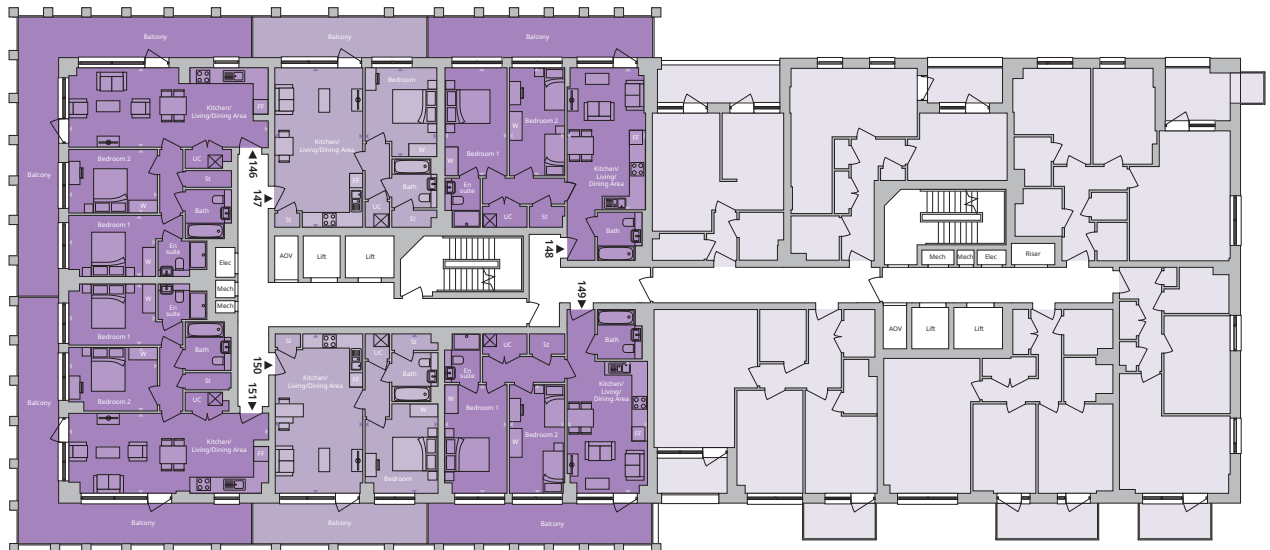
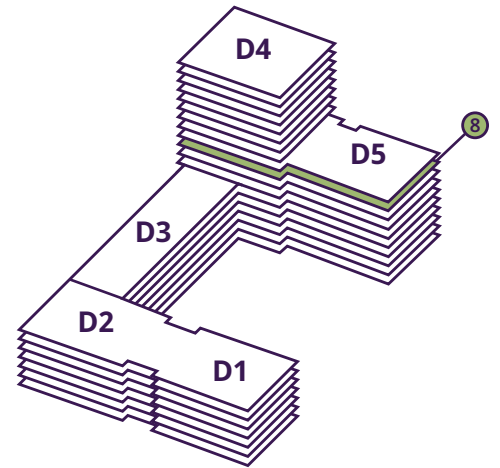
4.00m × 2.90m 13'2" × 9'5"

Total: 72.50 sq. m. | 780 sq. ft.

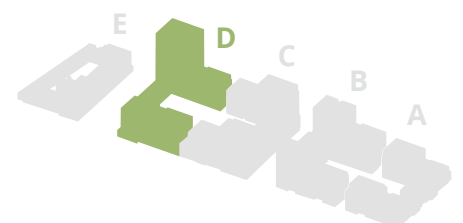
BLOCK D

Eighth Floor

NORTH WEST



- 1 bedroom
- 2 bedroom
- 3 bedroom
- Affordable housing
- Commercial area
- FF Fridge freezer
- St Storage
- UC Utility cupboard
- W Wardrobe
- Indicative wardrobe space



1 BED APARTMENTS

Plot 147 Type CD02

Kitchen/Living/Dining Area max.

7.20m × 4.00m 23'7" × 13'0"

Bedroom max.

4.00m × 3.30m 13'2" × 10'8"

Total: 52.60 sq. m. | 566 sq. ft.

Plot 150 Type CD02

Kitchen/Living/Dining Area max.

7.20m × 4.00m 23'7" × 13'0"

Bedroom max.

4.00m × 3.30m 13'2" × 10'8"

Total: 52.60 sq. m. | 566 sq. ft.

2 BED APARTMENTS

Plot 146 Type CD01

Kitchen/Living/Dining Area max.

8.90m × 3.60m 29'1" × 11'10"

Bedroom 1

3.90m min. × 2.80m max. 12'10" min. × 9'0" max.

Bedroom 2

4.00m × 2.90m 13'2" × 9'5"

Total: 72.50 sq. m. | 780 sq. ft.

Plot 148 Type CD39

Kitchen/Living/Dining Area

6.00m × 3.70m 19'6" × 12'1"

Bedroom 1 max.

4.90m × 2.80m 16'1" × 9'11"

Bedroom 2

4.90m × 2.50m max. 16'1" × 8'3" max.

Total: 70.8 sq. m. | 762 sq. ft.

Plot 149 Type CD39

Kitchen/Living/Dining Area

6.00m × 3.70m 19'6" × 12'1"

Bedroom 1 max.

4.90m × 2.80m 16'1" × 9'11"

Bedroom 2

4.90m × 2.50m max. 16'1" × 8'3" max.

Total: 70.0 sq. m. | 753 sq. ft.

Plot 151 Type CD01

Kitchen/Living/Dining Area max.

8.90m × 3.60m 29'1" × 11'10"

Bedroom 1

3.90m min. × 2.80m max. 12'10" min. × 9'0" max.

Bedroom 2

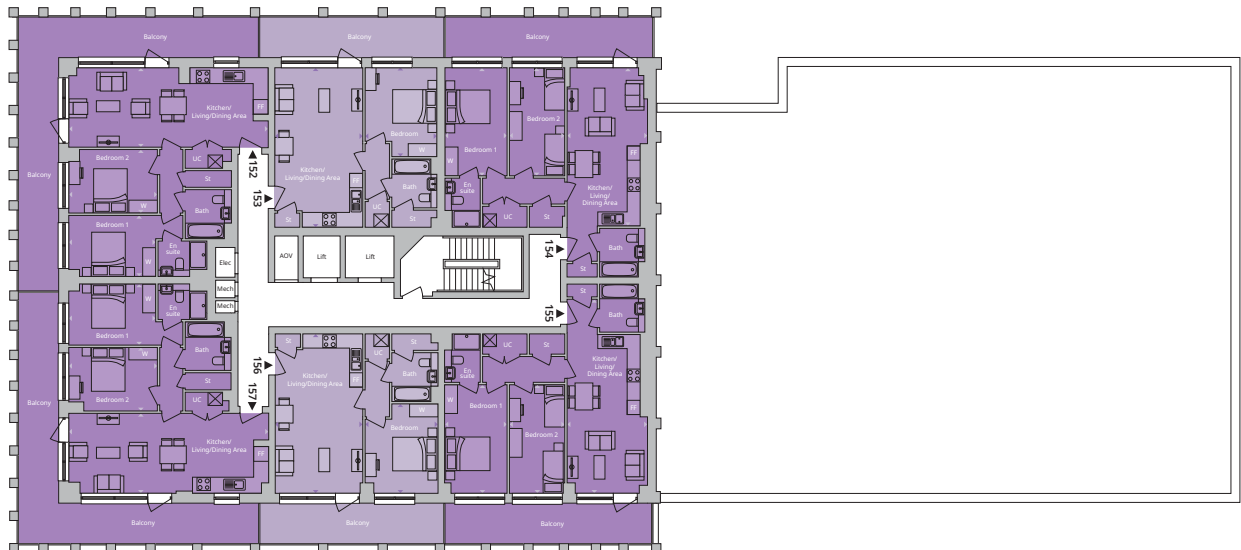
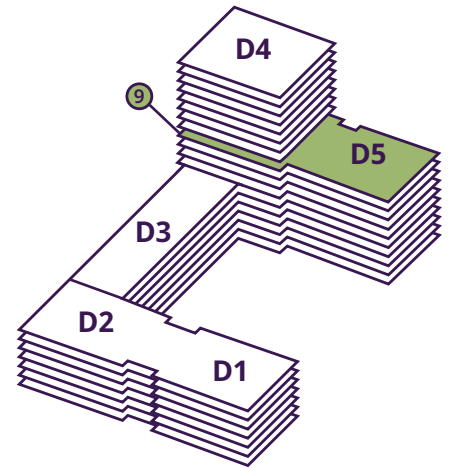
4.00m × 2.90m 13'2" × 9'5"

Total: 72.50 sq. m. | 780 sq. ft.

BLOCK D

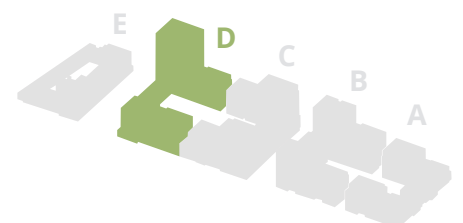
Ninth Floor

NORTH WEST



- 1 bedroom
- 2 bedroom

- FF Fridge freezer
- St Storage
- UC Utility cupboard
- W Wardrobe
- Indicative wardrobe space



1 BED APARTMENTS

Plot 153 Type CD02

Kitchen/Living/Dining Area max.

7.20m × 4.00m 23'7" × 13'0"

Bedroom max.

4.00m × 3.30m 13'2" × 10'8"

Total: 52.60 sq. m. | 566 sq. ft.

Plot 156 Type CD02

Kitchen/Living/Dining Area max.

7.20m × 4.00m 23'7" × 13'0"

Bedroom max.

4.00m × 3.30m 13'2" × 10'8"

Total: 52.60 sq. m. | 566 sq. ft.

2 BED APARTMENTS

Plot 152 Type CD01

Kitchen/Living/Dining Area max.

8.90m × 3.60m 29'1" × 11'10"

Bedroom 1

3.90m min. × 2.80m max. 12'10" min. × 9'0" max.

Bedroom 2

4.00m × 2.90m 13'2" × 9'5"

Total: 72.50 sq. m. | 780 sq. ft.

Plot 154 Type CD03

Kitchen/Living/Dining Area

7.10m min. × 3.60m max. 23'4" min. × 11'10" max.

Bedroom 1 max.

4.90m × 2.80m 16'1" × 9'11"

Bedroom 2

4.90m × 2.50m max. 16'1" × 8'3" max.

Total: 73.50 sq. m. | 791 sq. ft.

Plot 155 Type CD03

Kitchen/Living/Dining Area

7.10m min. × 3.60m max. 23'4" min. × 11'10" max.

Bedroom 1 max.

4.90m. × 2.80m 16'1" × 9'11"

Bedroom 2

4.90m × 2.50m max. 16'1" × 8'3" max.

Total: 73.50 sq. m. | 791 sq. ft.

Plot 157 Type CD01

Kitchen/Living/Dining Area max.

8.90m × 3.60m 29'1" × 11'10"

Bedroom 1

3.90m min. × 2.80m max. 12'10" min. × 9'0" max.

Bedroom 2

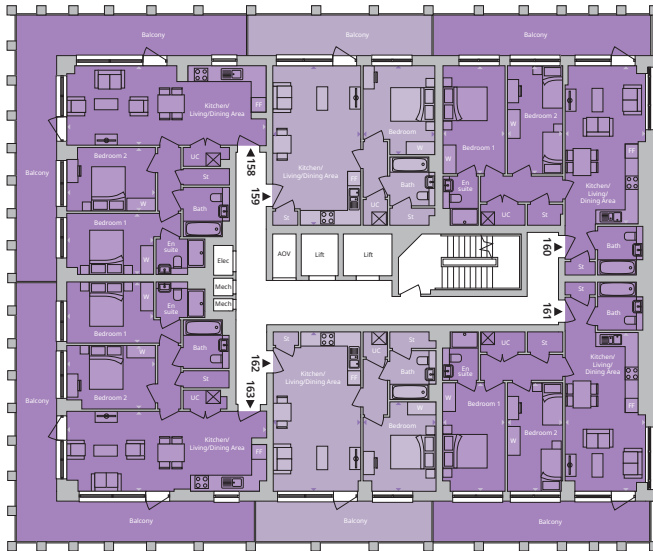
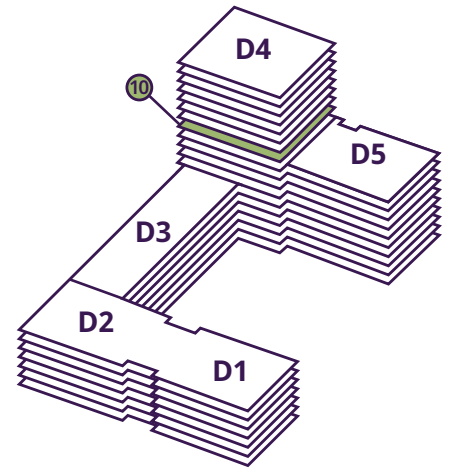
4.00m × 2.90m 13'2" × 9'5"

Total: 72.50 sq. m. | 780 sq. ft.

BLOCK D

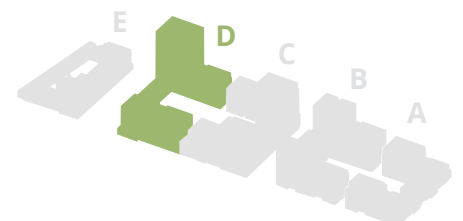
Tenth Floor

NORTH WEST



- 1 bedroom
- 2 bedroom

- FF Fridge freezer
- St Storage
- UC Utility cupboard
- W Wardrobe
- Indicative wardrobe space



1 BED APARTMENTS

Plot 159 Type CD02

Kitchen/Living/Dining Area max.

7.20m × 4.00m 23'7" × 13'0"

Bedroom max.

4.00m × 3.30m 13'2" × 10'8"

Total: 52.60 sq. m. | 566 sq. ft.

Plot 162 Type CD02

Kitchen/Living/Dining Area max.

7.20m × 4.00m 23'7" × 13'0"

Bedroom max.

4.00m × 3.30m 13'2" × 10'8"

Total: 52.60 sq. m. | 566 sq. ft.

2 BED APARTMENTS

Plot 158 Type CD01

Kitchen/Living/Dining Area max.

8.90m × 3.60m 29'1" × 11'10"

Bedroom 1

3.90m min. × 2.80m max. 12'10" min. × 9'0" max.

Bedroom 2

4.00m × 2.90m 13'2" × 9'5"

Total: 72.50 sq. m. | 780 sq. ft.

Plot 160 Type CD03

Kitchen/Living/Dining Area

7.10m min. × 3.60m max. 23'4" min. × 11'10" max.

Bedroom 1 max.

4.90m × 2.80m 16'1" × 9'11"

Bedroom 2

4.90m × 2.50m max. 16'1" × 8'3" max.

Total: 73.50 sq. m. | 791 sq. ft.

Plot 161 Type CD03

Kitchen/Living/Dining Area

7.10m min. × 3.60m max. 23'4" min. × 11'10" max.

Bedroom 1 max.

4.90m × 2.80m 16'1" × 9'11"

Bedroom 2

4.90m × 2.50m max. 16'1" × 8'3" max.

Total: 73.50 sq. m. | 791 sq. ft.

Plot 163 Type CD01

Kitchen/Living/Dining Area max.

8.90m × 3.60m 29'1" × 11'10"

Bedroom 1

3.90m min. × 2.80m max. 12'10" min. × 9'0" max.

Bedroom 2

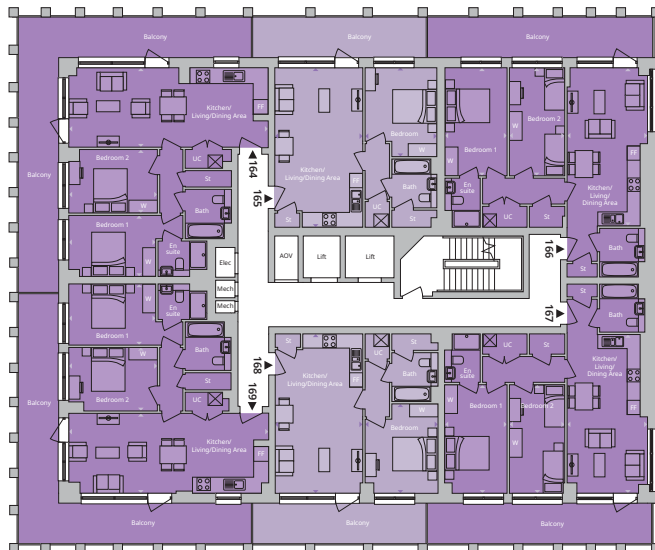
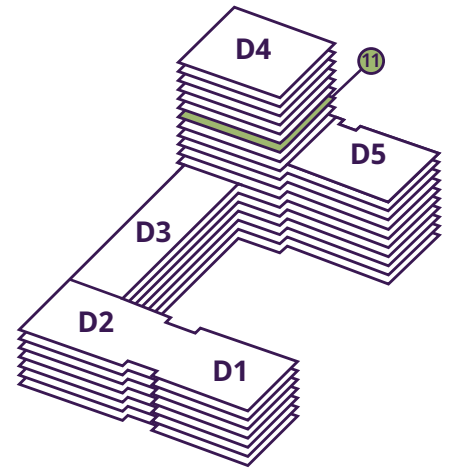
4.00m × 2.90m 13'2" × 9'5"

Total: 72.50 sq. m. | 780 sq. ft.

BLOCK D

Eleventh Floor

NORTH WEST



- 1 bedroom
- 2 bedroom

- FF Fridge freezer
- St Storage
- UC Utility cupboard
- W Wardrobe
- Indicative wardrobe space



1 BED APARTMENTS

Plot 165 Type CD02

Kitchen/Living/Dining Area max.

7.20m × 4.00m 23'7" × 13'0"

Bedroom max.

4.00m × 3.30m 13'2" × 10'8"

Total: 52.60 sq. m. | 566 sq. ft.

Plot 168 Type CD02

Kitchen/Living/Dining Area max.

7.20m × 4.00m 23'7" × 13'0"

Bedroom max.

4.00m × 3.30m 13'2" × 10'8"

Total: 52.60 sq. m. | 566 sq. ft.

2 BED APARTMENTS

Plot 164 Type CD01

Kitchen/Living/Dining Area max.

8.90m × 3.60m 29'1" × 11'10"

Bedroom 1

3.90m min. × 2.80m max. 12'10" min. × 9'0" max.

Bedroom 2

4.00m × 2.90m 13'2" × 9'5"

Total: 72.50 sq. m. | 780 sq. ft.

Plot 166 Type CD03

Kitchen/Living/Dining Area

7.10m min. × 3.60m max. 23'4" min. × 11'10" max.

Bedroom 1 max.

4.90m × 2.80m 16'1" × 9'11"

Bedroom 2

4.90m × 2.50m max. 16'1" × 8'3" max.

Total: 73.50 sq. m. | 791 sq. ft.

Plot 167 Type CD03

Kitchen/Living/Dining Area

7.10m min. × 3.60m max. 23'4" min. × 11'10" max.

Bedroom 1 max.

4.90m × 2.80m 16'1" × 9'11"

Bedroom 2

4.90m × 2.50m max. 16'1" × 8'3" max.

Total: 73.50 sq. m. | 791 sq. ft.

Plot 169 Type CD01

Kitchen/Living/Dining Area max.

8.90m × 3.60m 29'1" × 11'10"

Bedroom 1

3.90m min. × 2.80m max. 12'10" min. × 9'0" max.

Bedroom 2

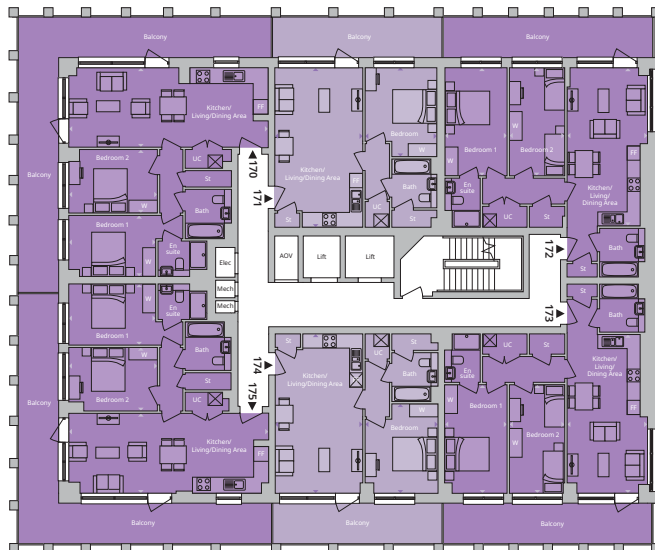
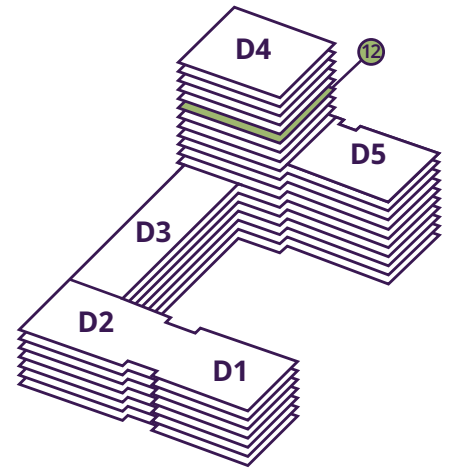
4.00m × 2.90m 13'2" × 9'5"

Total: 72.50 sq. m. | 780 sq. ft.

BLOCK D

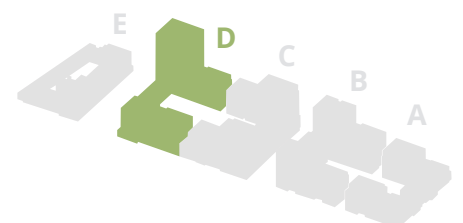
Twelfth Floor

NORTH WEST



- 1 bedroom
- 2 bedroom

- FF Fridge freezer
- St Storage
- UC Utility cupboard
- W Wardrobe
- Indicative wardrobe space



1 BED APARTMENTS

Plot 171 Type CD02

Kitchen/Living/Dining Area max.

7.20m × 4.00m 23'7" × 13'0"

Bedroom max.

4.00m × 3.30m 13'2" × 10'8"

Total: 52.60 sq. m. | 566 sq. ft.

Plot 174 Type CD02

Kitchen/Living/Dining Area max.

7.20m × 4.00m 23'7" × 13'0"

Bedroom max.

4.00m × 3.30m 13'2" × 10'8"

Total: 52.60 sq. m. | 566 sq. ft.

2 BED APARTMENTS

Plot 170 Type CD01

Kitchen/Living/Dining Area max.

8.90m × 3.60m 29'1" × 11'10"

Bedroom 1

3.90m min. × 2.80m max. 12'10" min. × 9'0" max.

Bedroom 2

4.00m × 2.90m 13'2" × 9'5"

Total: 72.50 sq. m. | 780 sq. ft.

Plot 172 Type CD03

Kitchen/Living/Dining Area

7.10m min. × 3.60m max. 23'4" min. × 11'10" max.

Bedroom 1 max.

4.90m × 2.80m 16'1" × 9'11"

Bedroom 2

4.90m × 2.50m max. 16'1" × 8'3" max.

Total: 73.50 sq. m. | 791 sq. ft.

Plot 173 Type CD03

Kitchen/Living/Dining Area

7.10m min. × 3.60m max. 23'4" min. × 11'10" max.

Bedroom 1 max.

4.90m × 2.80m 16'1" × 9'11"

Bedroom 2

4.90m × 2.50m max. 16'1" × 8'3" max.

Total: 73.50 sq. m. | 791 sq. ft.

Plot 175 Type CD01

Kitchen/Living/Dining Area max.

8.90m × 3.60m 29'1" × 11'10"

Bedroom 1

3.90m min. × 2.80m max. 12'10" min. × 9'0" max.

Bedroom 2

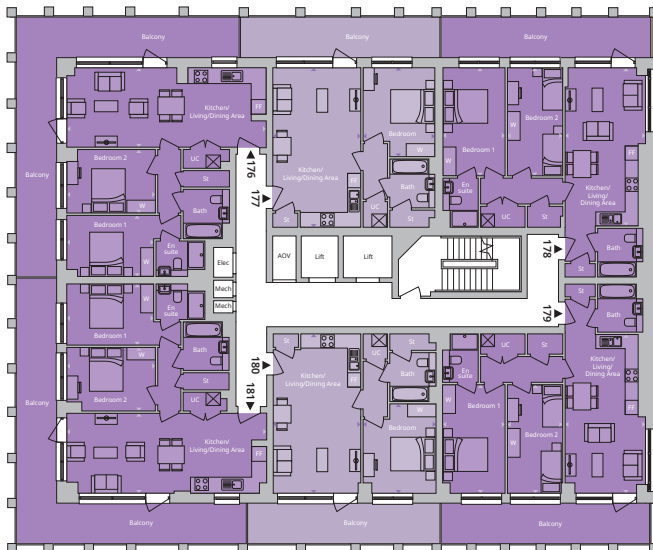
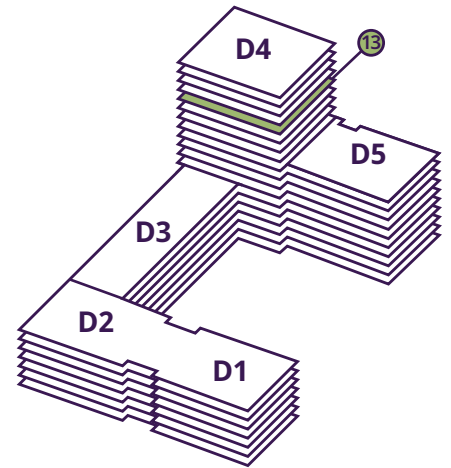
4.00m × 2.90m 13'2" × 9'5"

Total: 72.50 sq. m. | 780 sq. ft.

BLOCK D

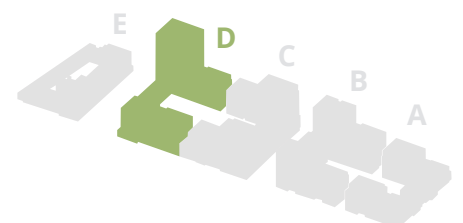
Thirteenth Floor

NORTH WEST



- 1 bedroom
- 2 bedroom

- FF Fridge freezer
- St Storage
- UC Utility cupboard
- W Wardrobe
- Indicative wardrobe space



1 BED APARTMENTS

Plot 177 Type CD02

Kitchen/Living/Dining Area max.

7.20m × 4.00m 23'7" × 13'0"

Bedroom max.

4.00m × 3.30m 13'2" × 10'8"

Total: 52.60 sq. m. | 566 sq. ft.

Plot 180 Type CD02

Kitchen/Living/Dining Area max.

7.20m × 4.00m 23'7" × 13'0"

Bedroom max.

4.00m × 3.30m 13'2" × 10'8"

Total: 52.60 sq. m. | 566 sq. ft.

2 BED APARTMENTS

Plot 176 Type CD01

Kitchen/Living/Dining Area max.

8.90m × 3.60m 29'1" × 11'10"

Bedroom 1

3.90m min. × 2.80m max. 12'10" min. × 9'0" max.

Bedroom 2

4.00m × 2.90m 13'2" × 9'5"

Total: 72.50 sq. m. | 780 sq. ft.

Plot 178 Type CD03

Kitchen/Living/Dining Area

7.10m min. × 3.60m max. 23'4" min. × 11'10" max.

Bedroom 1 max.

4.90m × 2.80m 16'1" × 9'11"

Bedroom 2

4.90m × 2.50m max. 16'1" × 8'3" max.

Total: 73.50 sq. m. | 791 sq. ft.

Plot 179 Type CD03

Kitchen/Living/Dining Area

7.10m min. × 3.60m max. 23'4" min. × 11'10" max.

Bedroom 1 max.

4.90m × 2.80m 16'1" × 9'11"

Bedroom 2

4.90m × 2.50m max. 16'1" × 8'3" max.

Total: 73.50 sq. m. | 791 sq. ft.

Plot 181 Type CD01

Kitchen/Living/Dining Area max.

8.90m × 3.60m 29'1" × 11'10"

Bedroom 1

3.90m min. × 2.80m max. 12'10" min. × 9'0" max.

Bedroom 2

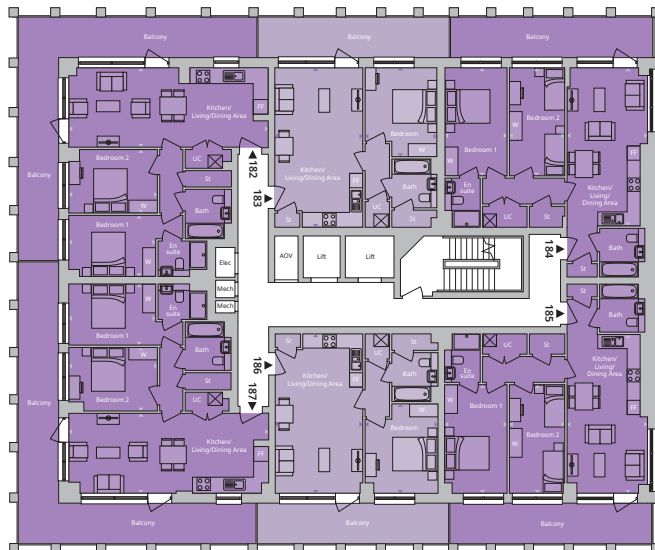
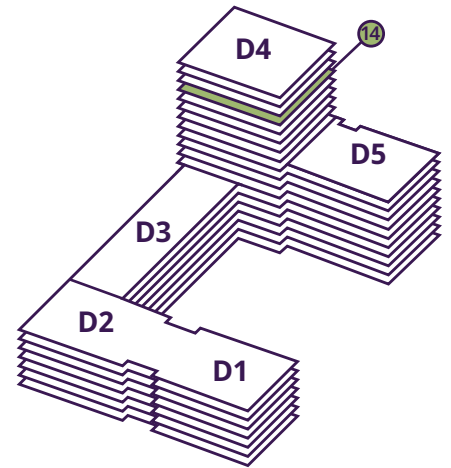
4.00m × 2.90m 13'2" × 9'5"

Total: 72.50 sq. m. | 780 sq. ft.

BLOCK D

Fourteenth Floor

NORTH WEST



FF Fridge freezer

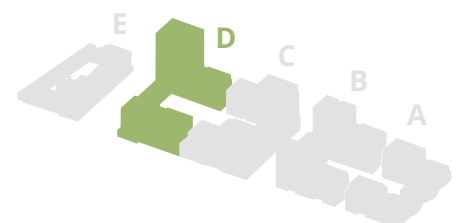
St Storage

UC Utility cupboard

W Wardrobe

--- Indicative wardrobe space

- 1 bedroom
- 2 bedroom



1 BED APARTMENTS

Plot 183 Type CD02

Kitchen/Living/Dining Area max.

7.20m × 4.00m 23'7" × 13'0"

Bedroom max.

4.00m × 3.30m 13'2" × 10'8"

Total: 52.60 sq. m. | 566 sq. ft.

Plot 186 Type CD02

Kitchen/Living/Dining Area max.

7.20m × 4.00m 23'7" × 13'0"

Bedroom max.

4.00m × 3.30m 13'2" × 10'8"

Total: 52.60 sq. m. | 566 sq. ft.

2 BED APARTMENTS

Plot 182 Type CD01

Kitchen/Living/Dining Area max.

8.90m × 3.60m 29'1" × 11'10"

Bedroom 1

3.90m min. × 2.80m max. 12'10" min. × 9'0" max.

Bedroom 2

4.00m × 2.90m 13'2" × 9'5"

Total: 72.50 sq. m. | 780 sq. ft.

Plot 184 Type CD03

Kitchen/Living/Dining Area

7.10m min. × 3.60m max. 23'4" min. × 11'10" max.

Bedroom 1 max.

4.90m × 2.80m 16'1" × 9'11"

Bedroom 2

4.90m × 2.50m max. 16'1" × 8'3" max.

Total: 73.50 sq. m. | 791 sq. ft.

Plot 185 Type CD03

Kitchen/Living/Dining Area

7.10m min. × 3.60m max. 23'4" min. × 11'10" max.

Bedroom 1 max.

4.90m × 2.80m 16'1" × 9'11"

Bedroom 2

4.90m × 2.50m max. 16'1" × 8'3" max.

Total: 73.50 sq. m. | 791 sq. ft.

Plot 187 Type CD01

Kitchen/Living/Dining Area max.

8.90m × 3.60m 29'1" × 11'10"

Bedroom 1

3.90m min. × 2.80m max. 12'10" min. × 9'0" max.

Bedroom 2

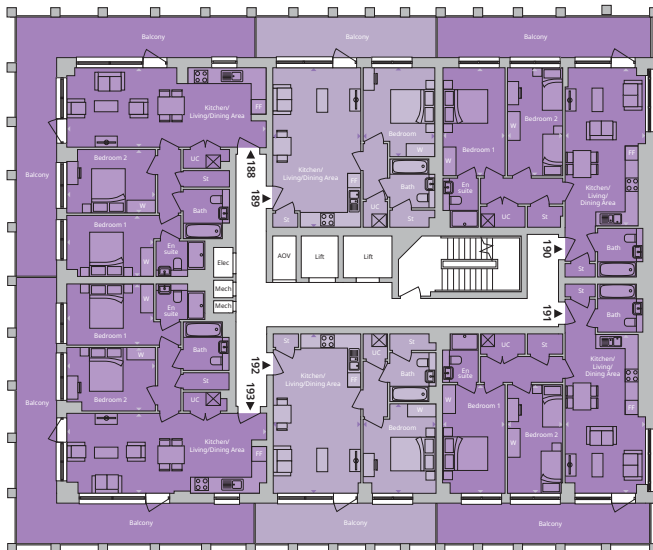
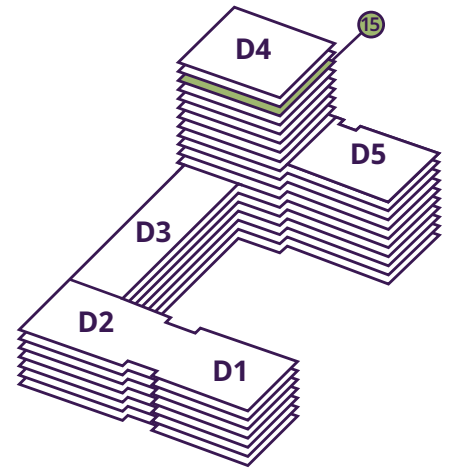
4.00m × 2.90m 13'2" × 9'5"

Total: 72.50 sq. m. | 780 sq. ft.

BLOCK D

Fifteenth Floor

NORTH WEST



FF Fridge freezer

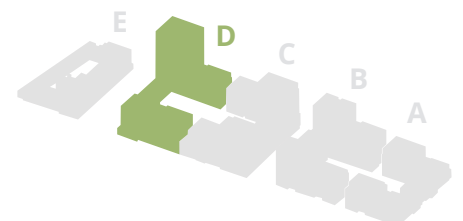
St Storage

UC Utility cupboard

W Wardrobe

--- Indicative wardrobe space

- 1 bedroom
- 2 bedroom



1 BED APARTMENTS

Plot 189 Type CD02

Kitchen/Living/Dining Area max.

7.20m × 4.00m 23'7" × 13'0"

Bedroom max.

4.00m × 3.30m 13'2" × 10'8"

Total: 52.60 sq. m. | 566 sq. ft.

Plot 192 Type CD02

Kitchen/Living/Dining Area max.

7.20m × 4.00m 23'7" × 13'0"

Bedroom max.

4.00m × 3.30m 13'2" × 10'8"

Total: 52.60 sq. m. | 566 sq. ft.

2 BED APARTMENTS

Plot 188 Type CD01

Kitchen/Living/Dining Area max.

8.90m × 3.60m 29'1" × 11'10"

Bedroom 1

3.90m min. × 2.80m max. 12'10" min. × 9'0" max.

Bedroom 2

4.00m × 2.90m 13'2" × 9'5"

Total: 72.50 sq. m. | 780 sq. ft.

Plot 190 Type CD03

Kitchen/Living/Dining Area

7.10m min. × 3.60m max. 23'4" min. × 11'10" max.

Bedroom 1 max.

4.90m × 2.80m 16'1" × 9'11"

Bedroom 2

4.90m × 2.50m max. 16'1" × 8'3" max.

Total: 73.50 sq. m. | 791 sq. ft.

Plot 191 Type CD03

Kitchen/Living/Dining Area

7.10m min. × 3.60m max. 23'4" min. × 11'10" max.

Bedroom 1 max.

4.90m × 2.80m 16'1" × 9'11"

Bedroom 2

4.90m × 2.50m max. 16'1" × 8'3" max.

Total: 73.50 sq. m. | 791 sq. ft.

Plot 193 Type CD01

Kitchen/Living/Dining Area max.

8.90m × 3.60m 29'1" × 11'10"

Bedroom 1

3.90m min. × 2.80m max. 12'10" min. × 9'0" max.

Bedroom 2

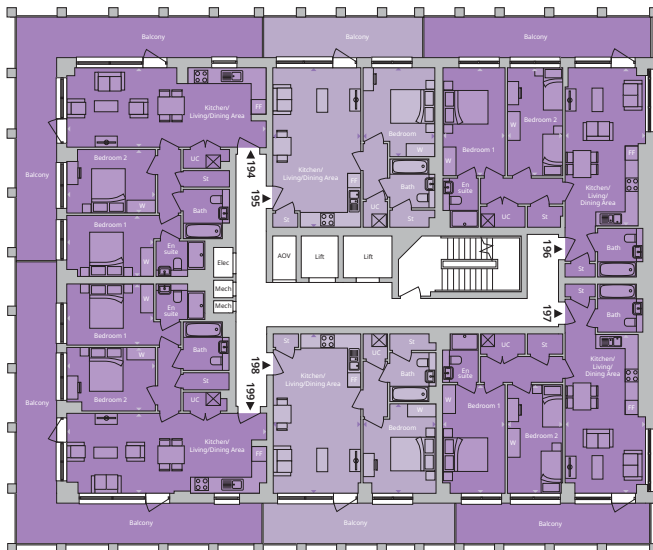
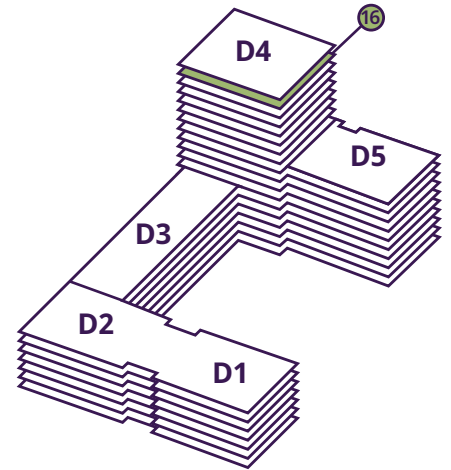
4.00m × 2.90m 13'2" × 9'5"

Total: 72.50 sq. m. | 780 sq. ft.

BLOCK D

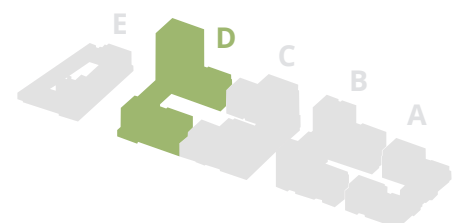
Sixteenth Floor

NORTH WEST



- 1 bedroom
- 2 bedroom

- FF Fridge freezer
- St Storage
- UC Utility cupboard
- W Wardrobe
- Indicative wardrobe space



1 BED APARTMENTS

Plot 195 Type CD02

Kitchen/Living/Dining Area max.

7.20m × 4.00m 23'7" × 13'0"

Bedroom max.

4.00m × 3.30m 13'2" × 10'8"

Total: 52.60 sq. m. | 566 sq. ft.

Plot 198 Type CD02

Kitchen/Living/Dining Area max.

7.20m × 4.00m 23'7" × 13'0"

Bedroom max.

4.00m × 3.30m 13'2" × 10'8"

Total: 52.60 sq. m. | 566 sq. ft.

2 BED APARTMENTS

Plot 194 Type CD01

Kitchen/Living/Dining Area max.

8.90m × 3.60m 29'1" × 11'10"

Bedroom 1

3.90m min. × 2.80m max. 12'10" min. × 9'0" max.

Bedroom 2

4.00m × 2.90m 13'2" × 9'5"

Total: 72.50 sq. m. | 780 sq. ft.

Plot 196 Type CD03

Kitchen/Living/Dining Area

7.10m min. × 3.60m max. 23'4" min. × 11'10" max.

Bedroom 1 max.

4.90m × 2.80m 16'1" × 9'11"

Bedroom 2

4.90m × 2.50m max. 16'1" × 8'3" max.

Total: 73.50 sq. m. | 791 sq. ft.

Plot 197 Type CD03

Kitchen/Living/Dining Area

7.10m min. × 3.60m max. 23'4" min. × 11'10" max.

Bedroom 1 max.

4.90m × 2.80m 16'1" × 9'11"

Bedroom 2

4.90m × 2.50m max. 16'1" × 8'3" max.

Total: 73.50 sq. m. | 791 sq. ft.

Plot 199 Type CD01

Kitchen/Living/Dining Area max.

8.90m × 3.60m 29'1" × 11'10"

Bedroom 1

3.90m min. × 2.80m max. 12'10" min. × 9'0" max.

Bedroom 2

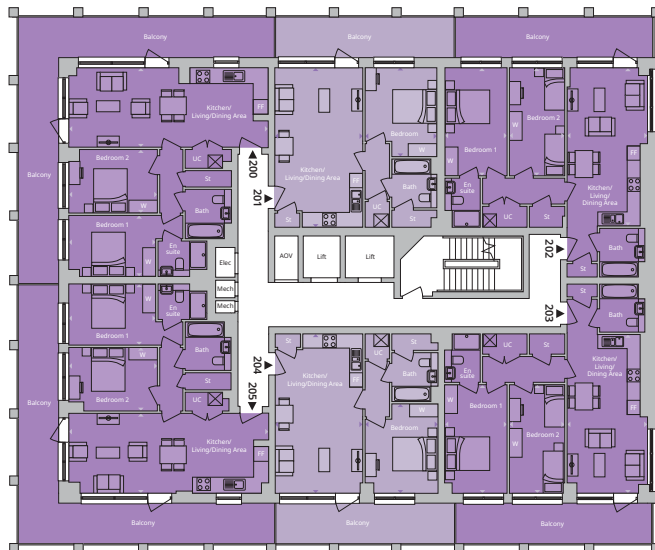
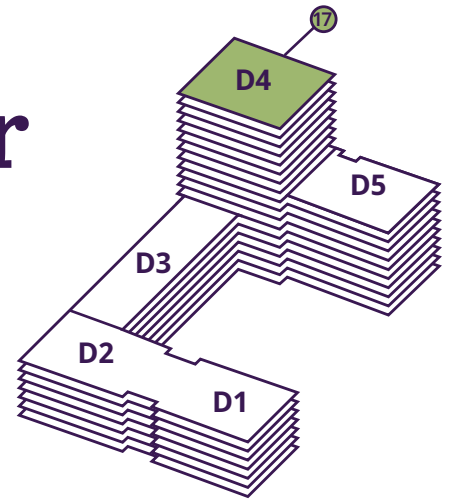
4.00m × 2.90m 13'2" × 9'5"

Total: 72.50 sq. m. | 780 sq. ft.

BLOCK D

Seventeenth Floor

NORTH WEST



- 1 bedroom
- 2 bedroom

- FF Fridge freezer
- St Storage
- UC Utility cupboard
- W Wardrobe
- Indicative wardrobe space



1 BED APARTMENTS

Plot 201 Type CD02

Kitchen/Living/Dining Area max.

7.20m × 4.00m 23'7" × 13'0"

Bedroom max.

4.00m × 3.30m 13'2" × 10'8"

Total: 52.60 sq. m. | 566 sq. ft.

Plot 204 Type CD02

Kitchen/Living/Dining Area max.

7.20m × 4.00m 23'7" × 13'0"

Bedroom max.

4.00m × 3.30m 13'2" × 10'8"

Total: 52.60 sq. m. | 566 sq. ft.

2 BED APARTMENTS

Plot 200 Type CD01

Kitchen/Living/Dining Area max.

8.90m × 3.60m 29'1" × 11'10"

Bedroom 1

3.90m min. × 2.80m max. 12'10" min. × 9'0" max.

Bedroom 2

4.00m × 2.90m 13'2" × 9'5"

Total: 72.50 sq. m. | 780 sq. ft.

Plot 202 Type CD03

Kitchen/Living/Dining Area

7.10m min. × 3.60m max. 23'4" min. × 11'10" max.

Bedroom 1 max.

4.90m × 2.80m 16'1" × 9'11"

Bedroom 2

4.90m × 2.50m max. 16'1" × 8'3" max.

Total: 73.50 sq. m. | 791 sq. ft.

Plot 203 Type CD03

Kitchen/Living/Dining Area

7.10m min. × 3.60m max. 23'4" min. × 11'10" max.

Bedroom 1 max.

4.90m × 2.80m 16'1" × 9'11"

Bedroom 2

4.90m × 2.50m max. 16'1" × 8'3" max.

Total: 73.50 sq. m. | 791 sq. ft.

Plot 205 Type CD01

Kitchen/Living/Dining Area max.

8.90m × 3.60m 29'1" × 11'10"

Bedroom 1

3.90m min. × 2.80m max. 12'10" min. × 9'0" max.

Bedroom 2

4.00m × 2.90m 13'2" × 9'5"

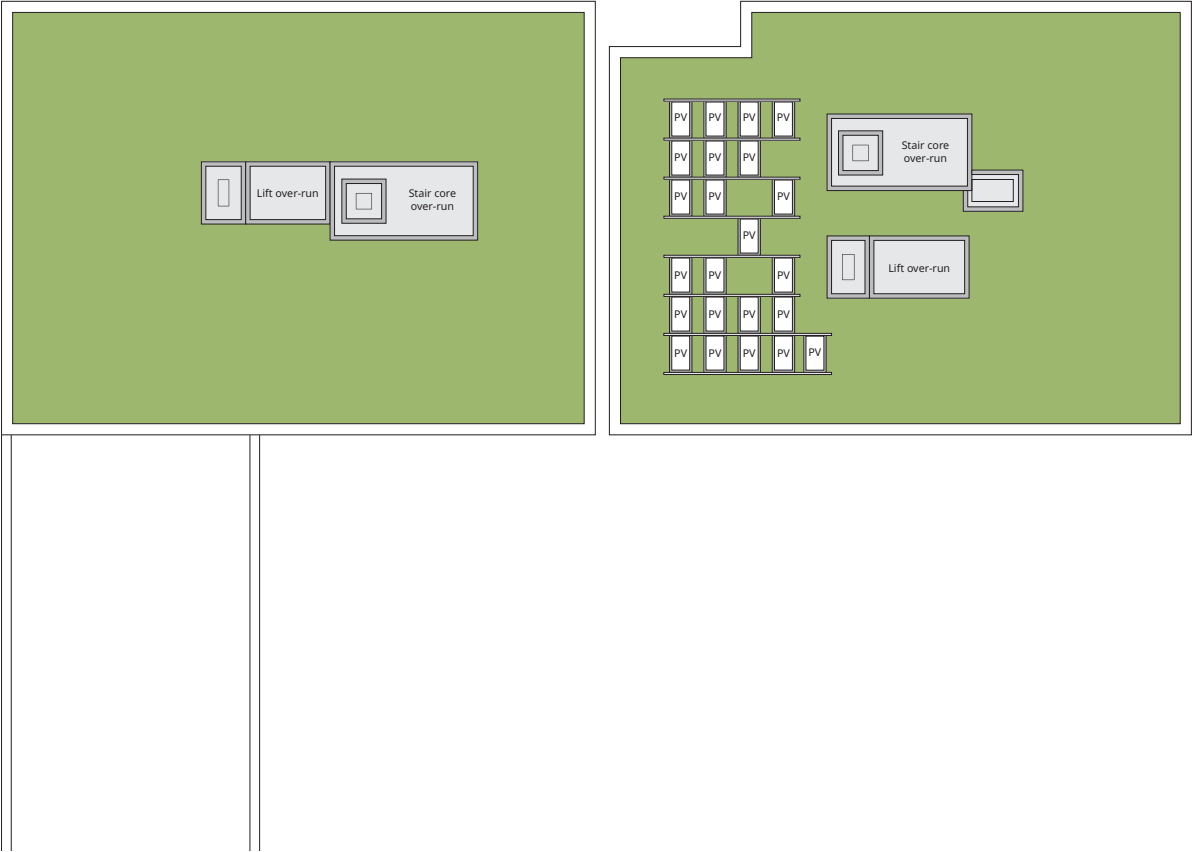
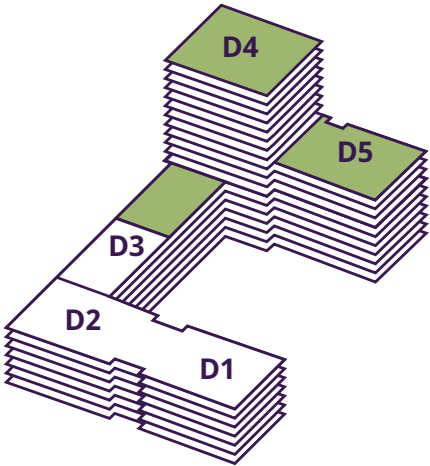
Total: 72.50 sq. m. | 780 sq. ft.



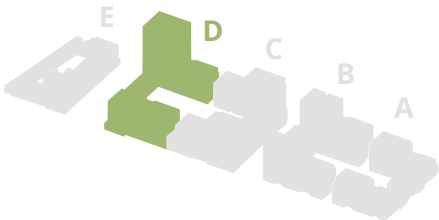
BLOCK D

Roof Plan

NORTH WEST



Roof
PV Solar Panel

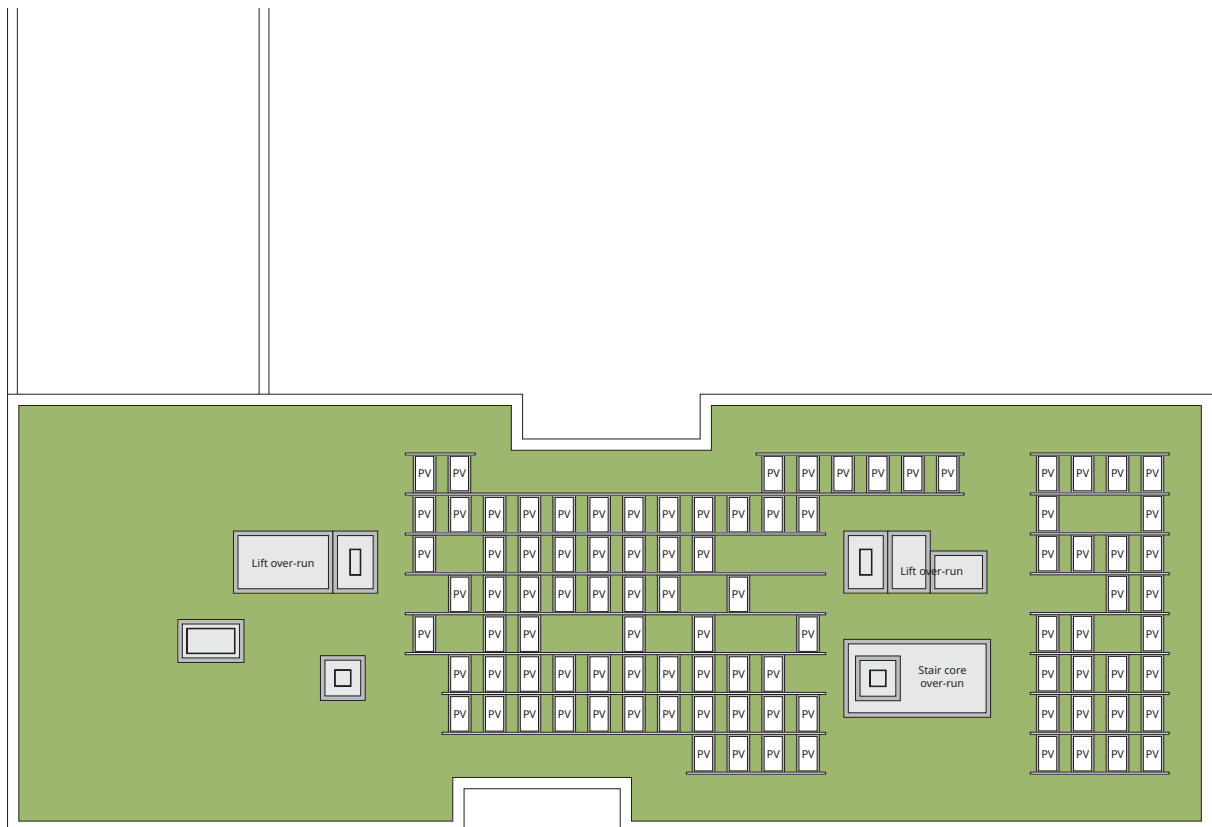
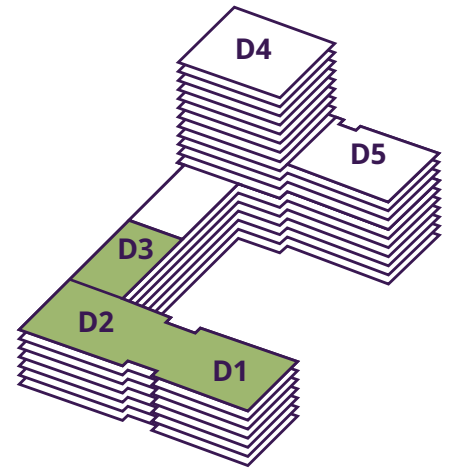




BLOCK D

Roof Plan

NORTH EAST



Floor plans depict a typical layout of this apartment type. For exact plot specification, details of external and internal finishes, dimensions and floor plan differences consult your Sales Executive. All dimensions are + or - 50mm and floor plans are not shown to scale. The kitchen layout and furniture positions are for indicative purposes only. & Wheelchair adaptable design is available for this property type and may have features which differ from our standard apartment type. Please speak to a Sales Executive for further information and specification details. Apartments have openable windows either side of mullions. Please speak to your sales agent for clarification. Reduction to the ceiling heights in the kitchen/ living/dining area from 2.5m to 2.4m on selected plots.



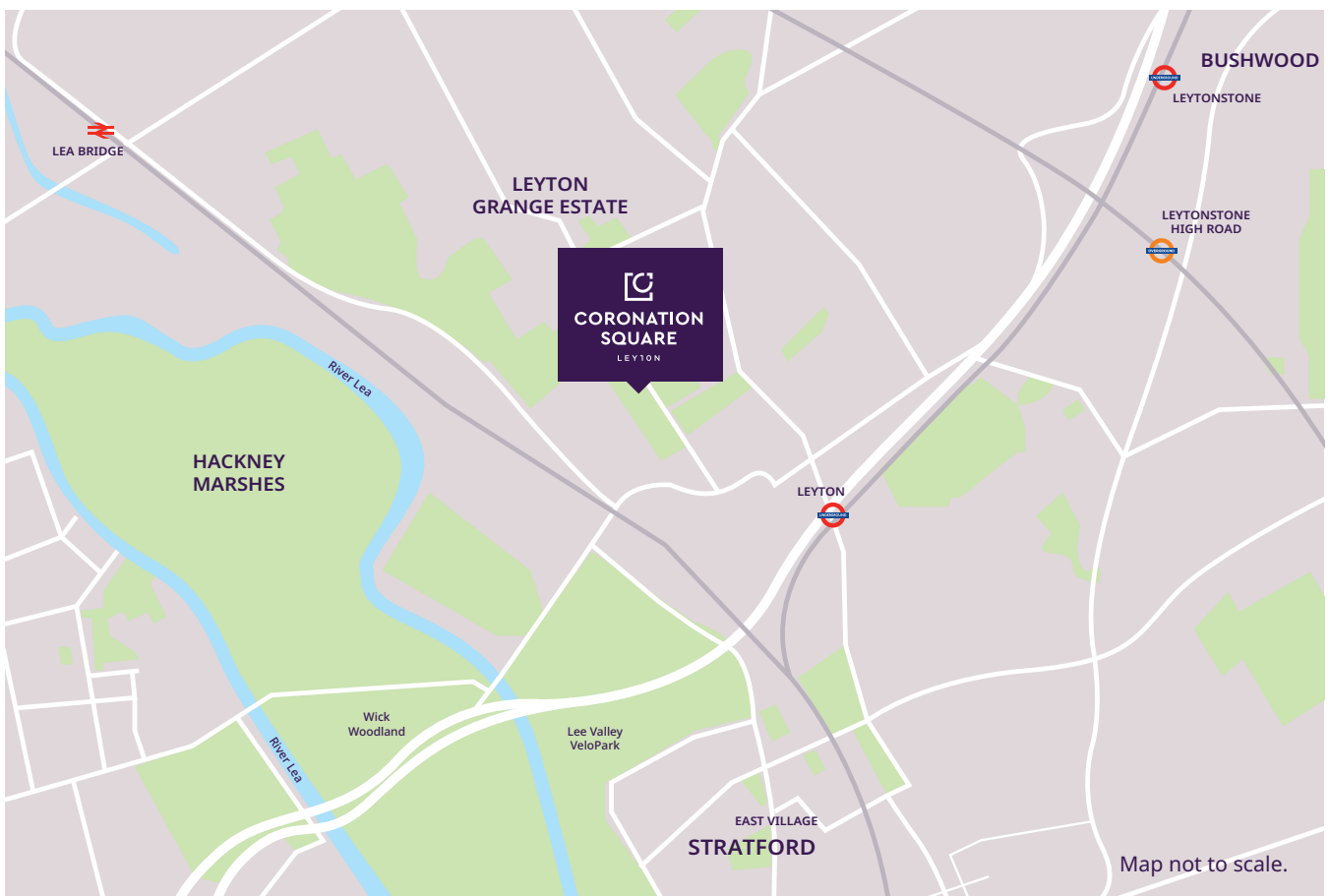
How to find us

FROM A12 (EAST)

- Head south-west on A12
- Use the 2nd from the left lane to take the A106 exit towards Dalston/Hackney/Stratford/New Spitalfields Market/Westfield
- Turn right onto Eastway/A106 (signs for Clapton/Hackney/New Spitalfields Market)
- Turn right to stay on Eastway/A106
- Turn left onto Oliver Road, continue for 0.1 miles
- Coronation Square will be on your left

FROM LEYTON TUBE STATION

- Walk north on High Road Leyton/A112 towards Maud Road
- Turn left onto Maud Road, after 384ft turn right onto York Road
- Continue onto Ruckholt Road/A106
- Turn right onto Oliver Road, after 0.1 miles
- Coronation Square will be on your left




Taylor Wimpey reserves the right to change specifications, designs, floor plans and siteplans at any time. All lifestyle and location imagery used within this brochure is indicative only. Please ask the Sales Executive for up-to-date information when reserving your new home. Information is correct at the time of broadcast. Please see the development page on our website for further details. Distances taken from [google.co.uk/maps](https://www.google.co.uk/maps). 47890/January 2024.



THE TAYLOR WIMPEY STORY

Taylor Wimpey have established an impressive track record for innovation and quality, with an unrivalled reputation for creating first-class residential developments – a reputation that we have built up over many years. We use this in-depth experience each time we plan, design and build a development, always considering the location and heritage that already exists in a town, county or region.

From our flagship city developments such as Postmark and Chobham Manor, to more unique refurbished-based projects such as Beaumont Gardens, our past and current developments offer homes that buyers can enjoy whilst experiencing all the benefits of a new-build home when it comes to energy efficiency and low maintenance. Whether you choose a village setting or the bustle of a market town, a country retreat or a city pad, you will find a home crafted for modern living.



At Taylor Wimpey we are proud of our business – and of the many awards we have won that recognise our commitment to delivering appealing new home schemes for the 21st century.

Coronation Square Sales Suite

118 Oliver Road

Leyton

E10 5UJ

Tel: 020 3053 0743

taylorwimpey.co.uk

Taylor Wimpey London
Ground Floor East Wing, BT Brentwood,
1 London Road, Brentwood, Essex, CM14 4QP



**Taylor
Wimpey**