

TO LET - OFFICE

150 BISHOPSGATE

EC2M 4AF



Key Highlights

- 4,219 to 9,816 sq ft
- Restaurant in the building
- Exposed Services
- Suspended LED lighting
- Newly Refurbished
- Views over Bishopsgate Plaza, the City's newest public square
- Metal raised floors
- Bike Storage and Showers

SAVILLS City
15 Finsbury Circus
London EC2M 7EB
020 7499 8644
savills.co.uk



Description

Designed by PLP Architects, the offices form part of the iconic UOL hotel development at One Bishopsgate Plaza, EC2. The comprehensive refurbishment offers 4,219 to 9,816 sq ft of light-filled media style office space.

Location

Situated opposite one of London's best connected hubs in Liverpool Street Station, offering National Rail and Underground serves, as well as Crossrail.

Overlooking London's newest public square in Bishopsgate Plaza, the building is a short walk to the Broadgate Estate, Spitalfields Market and Bank.

Accommodation

The accommodation comprises of the following

Name	sq ft	sq m	Availability
2nd	4,219	391.96	Available
1st	5,597	519.98	Available
Total	9,816	911.94	

Specification

Exposed A/C
Metal raised access floors
Suspended LED lighting
Bike Storage
Showers

Viewings

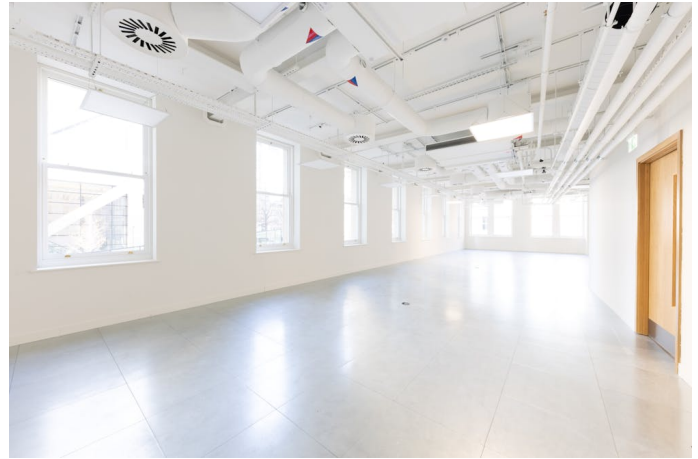
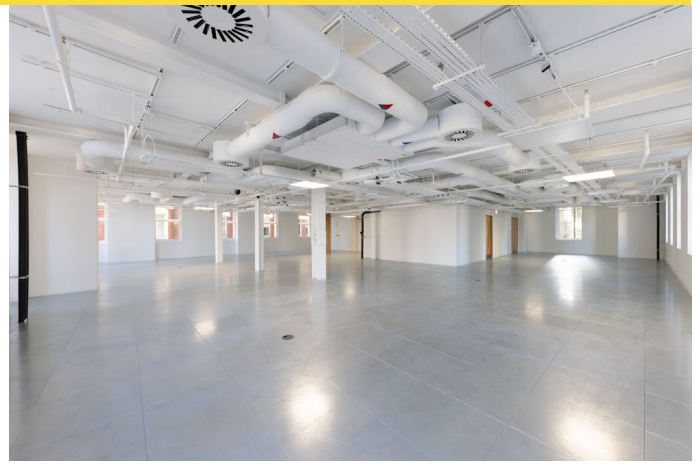
Strictly through Sole Agents Savills, please contact James Gillet or Artie Taylor for more information.

Terms

New lease direct from the Landlord

Business Rates

TBC



Contact

James Gillett

0207 409 8961
0797 200 0250
jgillett@savills.com

Artie Taylor

0207 758 3873
0786 620 3403
artie.taylor@savills.com

Fred Greenslade

07974060010
fred.greenslade@savills.com

IMPORTANT NOTICE

Savills, their clients and any joint agents give notice that: 1. They are not authorised to make or give any representations or warranties in relation to the property either here or elsewhere, either on their own behalf or on behalf of their client or otherwise. They assume no responsibility for any statement that may be made in these particulars. These particulars do not form part of any offer or contract and must not be relied upon as statements or representations of fact. 2. Any areas, measurements or distances are approximate. The text, photographs and plans are for guidance only and are not necessarily comprehensive. It should not be assumed that the property has all necessary planning, building regulation or other consents and Savills have not tested any services, equipment or facilities. Purchasers must satisfy themselves by inspection or otherwise. Generated by AgentsInsight / Generated on 08/03/2024

savills