

ADELAIDE HOUSE

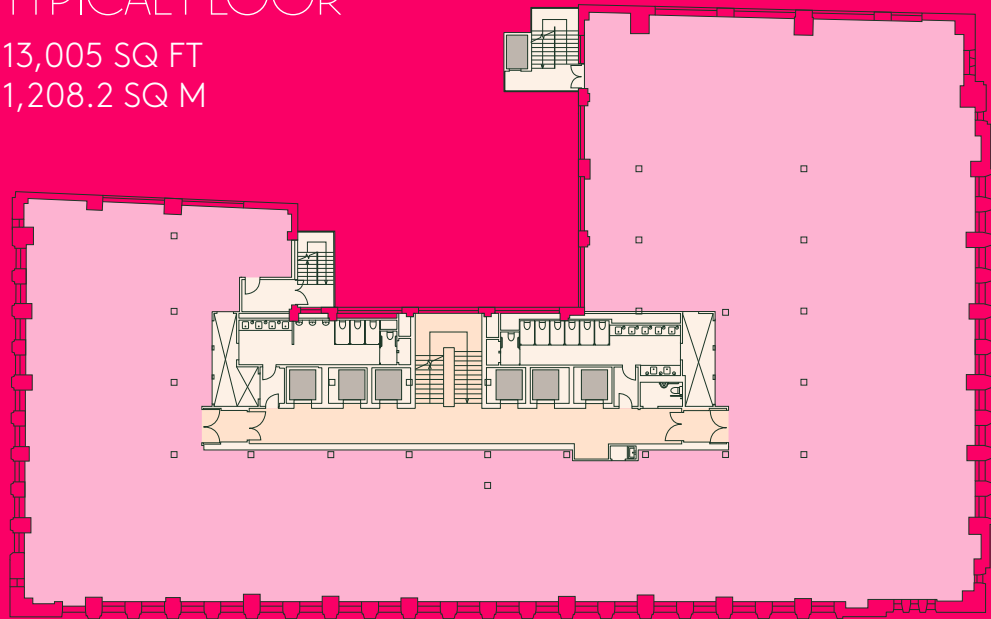
LONDON BRIDGE



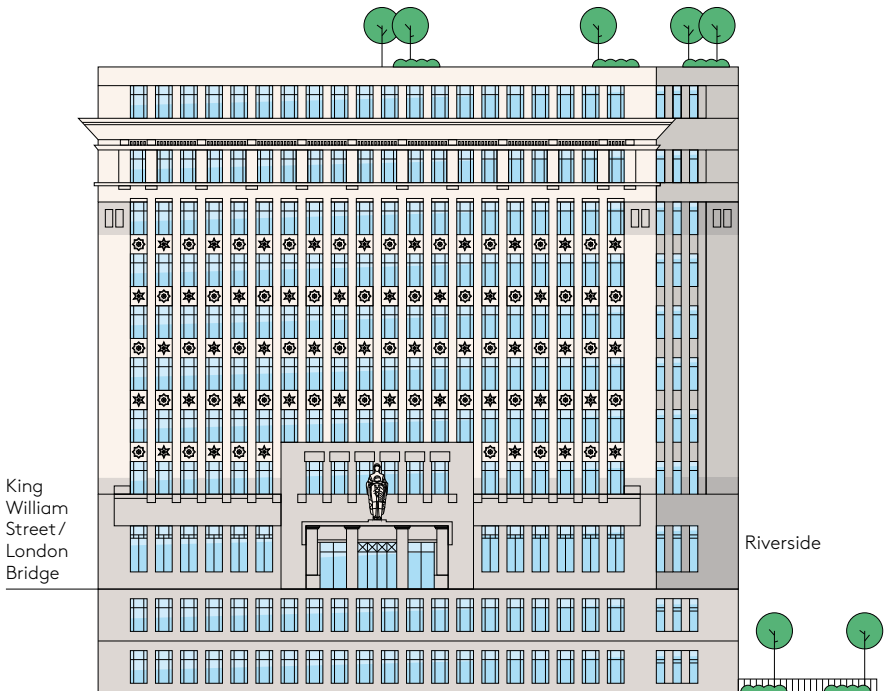
129,000 SQ FT OF
ICONIC RIVERSIDE
WORKSPACE WITH
SPECTACULAR VIEWS.
PC Q1 2025.

TYPICAL FLOOR

13,005 SQ FT
1,208.2 SQ M



OFFICE (SQ FT)	
8	13,069
7	12,858
6	13,021
5	13,083
4	13,005
3	13,167
2	13,225
1	13,403
G	11,578
RL	13,284
TOTAL	129,693



ALL AREAS ARE APPROXIMATE.

ADELAIDE HOUSE

BUILDING HIGHLIGHTS



Major rebuild with all new services, repositioned core & new windows



6 new passenger lifts



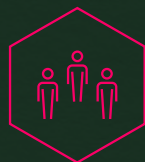
4 pipe fan coil air conditioning



Potential for a business lounge



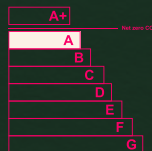
330 Cycle Spaces



Occupational density of 1:8 sq m



Targeting Breeam Excellent



Targeting EPC Rating A

AdelaideHouse.London

Important notice relating to the Misrepresentation Act 1967 and the Property Misdescriptions Act 1991: (i) the particulars are set out as a general outline only for guidance of intending purchasers or lessees and do not constitute, nor constitute part of, an offer or contract (ii) all descriptions, dimensions, references to condition and necessary permission for use and occupation, and other details are given in good faith and are believed to be correct, but any intending purchasers or occupiers should not rely on them as statements or representations of fact, but must satisfy themselves by inspection or otherwise as to the correctness of each of them. September 2023.

