

**10,365 sq ft short term office space
available to let**

HX5

Harbour Exchange London E14



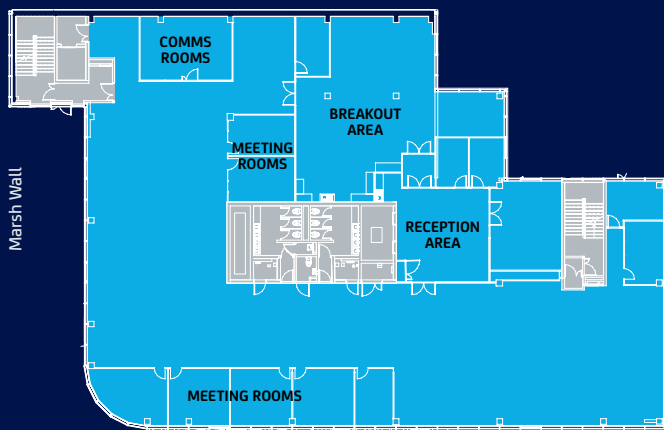
Situated on the 1st floor the available accommodation offers an incoming occupier refurbished and cost effective short term office space.

Specification

- New ceiling and floor finishes
- In situ glazed meeting rooms
- Floor to ceiling heights of 2.6m
- Ethernet cabling
- Manned reception
- Car parking available
- Available to occupy from June 2020

1st Floor Plan

10,365 Sq Ft (NIA)



Harbour Exchange Square

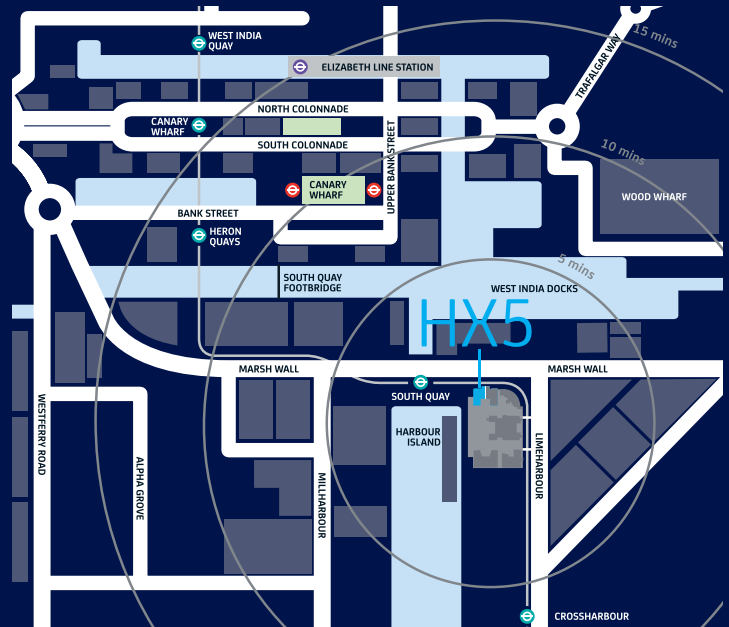
⬅ N For indicative purposes only, not to scale.



Ground floor reception

Location

HX5 is situated on the Harbour Exchange Estate, just south of Canary Wharf and the major Wood Wharf redevelopment. Located within a 1 minute walk from the South Quay DLR station and within 10 minutes from Canary Wharf station.



Viewing

Strictly through sole letting agents.

Josh Lamb
020 7409 8891
jlamb@savills.com

Philip Pearce
020 7409 8917
ppearce@savills.com

Charlie Pascoe
020 7535 2968
charlie.pascoe@savills.com



Important Notice Savills, their clients and any joint agents give notice that: 1. They are not authorised to make or give any representations or warranties in relation to the property either here or elsewhere, either on their own behalf or on behalf of their client or otherwise. They assume no responsibility for any statement that may be made in these particulars. These particulars do not form part of any offer or contract and must not be relied upon as statements or representations of fact. 2. Any areas, measurements or distances are approximate. The text, photographs and plans are for guidance only and are not necessarily comprehensive. It should not be assumed that the property has all necessary planning, building regulation or other consents and Savills have not tested any services, equipment or facilities. Purchasers must satisfy themselves by inspection or otherwise.