



TEMPLE FORTUNE  
ESTATES

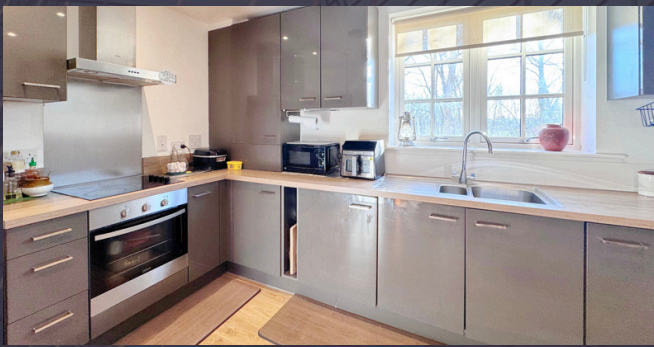
Marina Court, Ashridge Close N3 3AQ

## BEAUTIFUL & MODERN 2 BEDROOM FLAT FOR SALE

PRICE  
£480,000

### ABOUT PROPERTY

This modern property blends comfort and style, making it an ideal choice for various buyers. Located on the first floor, the flat features two bedrooms, an open-plan kitchen, and a family bathroom with a bath. Additional highlights include a covered balcony and convenient lift access, as well as bicycle storage. This well-maintained flat is perfect for anyone seeking a charming home in a great location.



### PROPERTY FEATURES



2 DOUBLE BEDROOMS



SPACIOUS LIVING ROOM



BATHROOM WITH BATHTUB



LARGE BALCONY



MODERN INTERIOR

### GET IN TOUCH

020 8952 0908  
079 5629 1499

admin@templefe.co.uk  
www.templefe.co.uk

1 Hallswelle Parade, Finchley  
Road, London, NW11 0DL





TEMPLE FORTUNE  
ESTATES

## MORE ABOUT THE PROPERTY

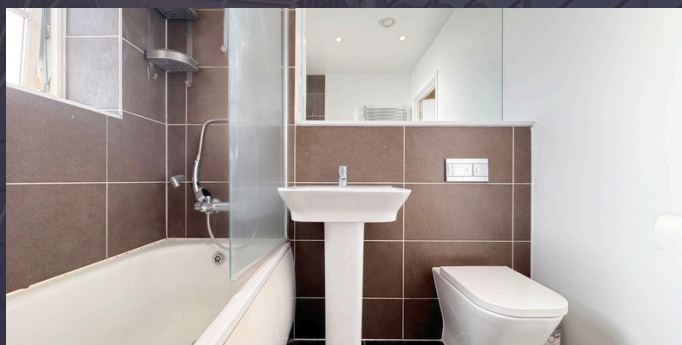
### Property Highlights:

- **Open Plan Kitchen:** Enjoy a contemporary kitchen that flows effortlessly into the living space, ideal for entertaining family and friends.
- **Spacious Bedrooms:** Two well-proportioned bedrooms provide ample space for rest and relaxation.
- **Family Bathroom:** A clean and functional bathroom featuring a bath, designed for your everyday convenience.

### Location:

Conveniently located in Finchley Central, you will appreciate easy access to a variety of local amenities, public transport links, and nearby green spaces.

This is a fantastic opportunity to secure a beautiful home in a sought-after area.



## GET IN TOUCH

020 8952 0908  
079 5629 1499

admin@templefe.co.uk  
www.templefe.co.uk

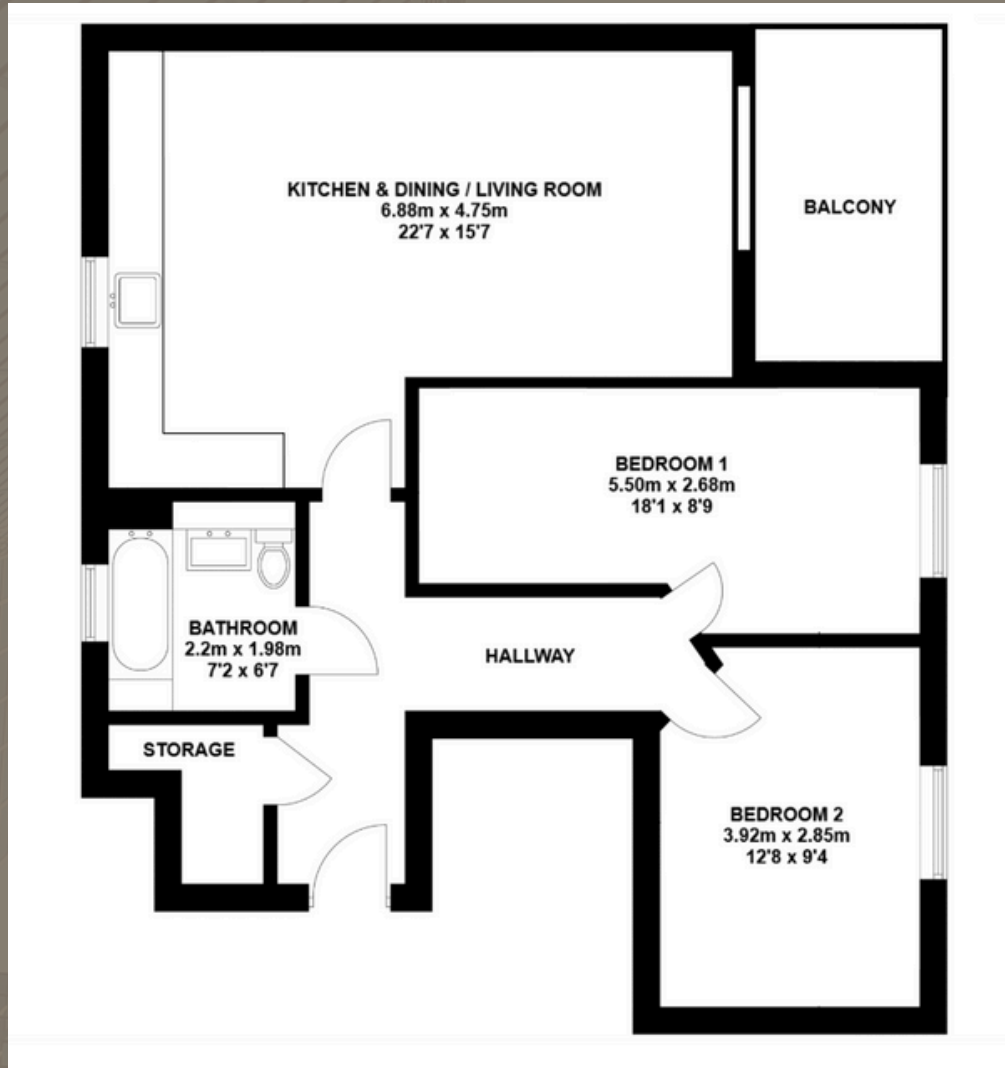
1 Hallswelle Parade, Finchley  
Road, London, NW11 0DL





TEMPLE FORTUNE  
ESTATES

**APPROX. INTERNAL AREA 71.9 SQ METERS / 774 SQ FT  
SITUATED ON THE FIRST FLOOR**



## ADDITIONAL INFORMATION

- Tenure: Leasehold
- Length of Lease: 113 years left
- No Ground Rent
- Council Tax: E (Barnet)

## GET IN TOUCH

020 8952 0908  
079 8336 4090

admin@templefe.co.uk  
www.templefe.co.uk

1 Hallswelle Parade, Finchley  
Road, London, NW11 0DL