



TEMPLE FORTUNE
ESTATES

Marina Court, Ashridge Close N3 3AQ
**BEAUTIFUL & MODERN
2 BEDROOM FLAT
FOR SALE**

PRICE
£425,000

ABOUT PROPERTY

Temple Fortune Estates is delighted to present this charming two-bedroom apartment in Finchley Central. This modern and well-maintained property features an open plan kitchen and living space, two double bedrooms, and a family bathroom with a bathtub.

The apartment is in excellent condition and available for immediate move-in, making it an ideal choice for first-time buyers or investors.



PROPERTY FEATURES



TWO DOUBLE BEDROOMS



SPACIOUS LIVING ROOM



BATHROOM WITH BATHTUB



LARGE BALCONY



MODERN INTERIOR

GET IN TOUCH

020 8952 0908
079 5629 1499

admin@templefe.co.uk
www.templefe.co.uk

1 Hallswelle Parade, Finchley
Road, London, NW11 0DL



TEMPLE FORTUNE
ESTATES

MORE ABOUT THE PROPERTY

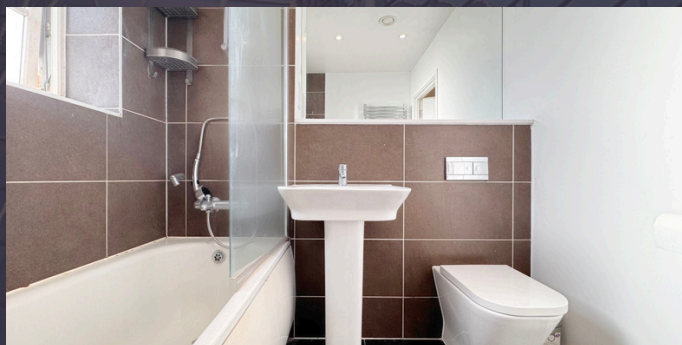
Property Highlights:

- Two double bedrooms
- Spacious open-concept kitchen
- Family bathroom
- Well-maintained throughout
- Complimentary parking available
- Lift in the building
- Secure bicycle storage
- Within walking distance to primary and secondary schools

Located conveniently in Finchley Central, residents will benefit from close proximity to local amenities, public transport options, and green areas, perfect for those who appreciate a vibrant community.



Finchley Central Underground Station / Northern Line: **0.8 miles**



GET IN TOUCH

020 8952 0908
079 5629 1499

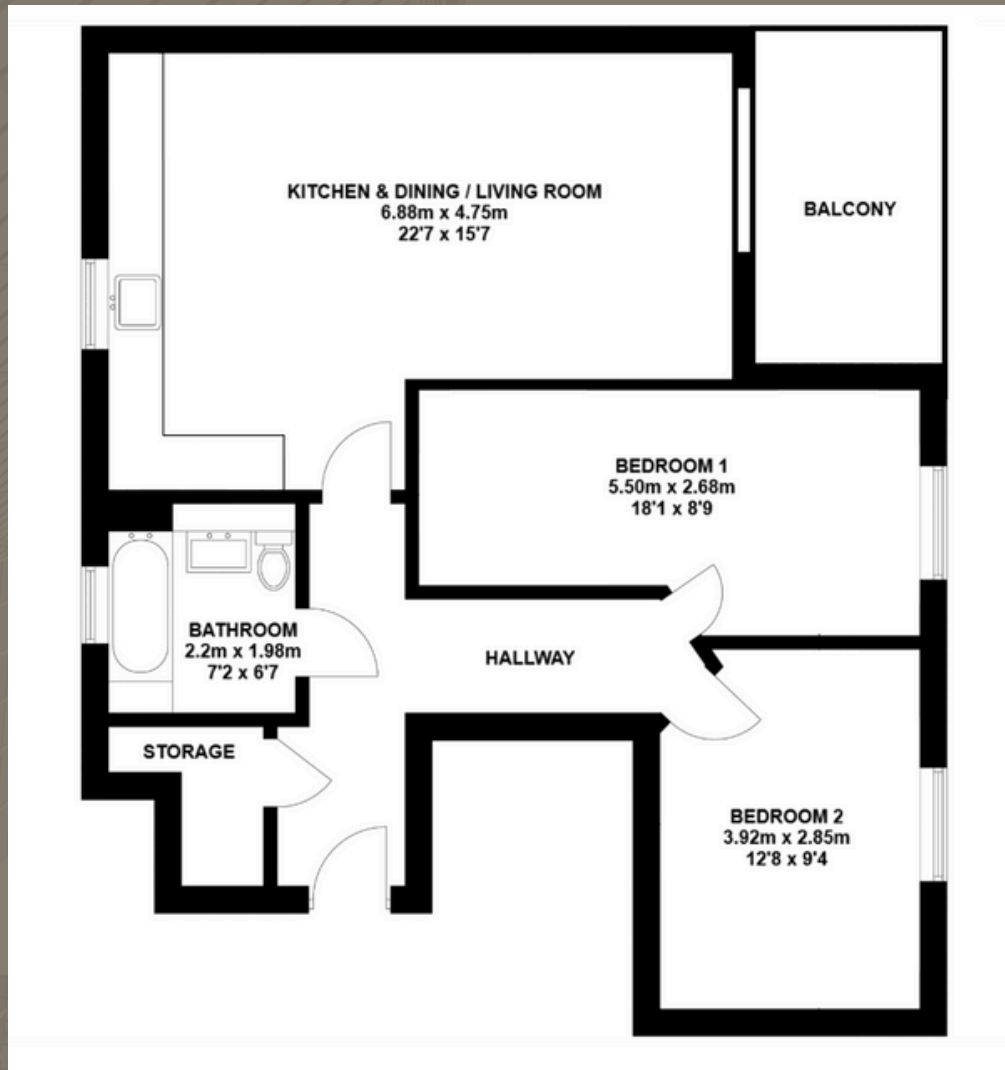
admin@templefe.co.uk
www.templefe.co.uk

1 Hallswelle Parade, Finchley
Road, London, NW11 0DL



TEMPLE FORTUNE
ESTATES

APPROX. INTERNAL AREA 71.9 SQ METERS / 774 SQ FT
SITUATED ON THE FIRST FLOOR



ADDITIONAL INFORMATION

- Tenure: Leasehold
- Length of Lease: 113 years left
- No Ground Rent
- Council Tax: E (Barnet)

GET IN TOUCH

020 8952 0908
079 8336 4090

admin@templefe.co.uk
www.templefe.co.uk

1 Hallswelle Parade, Finchley
Road, London, NW11 0DL