



TEMPLE FORTUNE  
ESTATES

Napsbury Lane, St. Albans AL1  
**4-BEDROOM & 5-BATHROOM  
SEMI-DETACHED HOME**

**FOR SALE**

**PRICE  
£1,100,000**

### ABOUT PROPERTY

This stunning four-bedroom, five-bathroom semi-detached home is one of the largest of its kind currently on the market in St Albans, offering an exceptional 2012 square feet of beautifully designed living space. Situated on a spacious plot just 1.2 miles from St Albans city centre, this home is perfect for families or professionals seeking both convenience and tranquillity. This property is ideal for a growing family and has so many features to offer.



### PROPERTY FEATURES



REFURBISHED TO A HIGH  
STANDARD



4 VERY SPACIOUS  
BEDROOMS



4 BATHROOMS & 1 WC



NEWLY LAID PATIO



2012 SQ FT FLOOR SPACE

### GET IN TOUCH

020 8952 0908  
079 5629 1499

admin@templefe.co.uk  
www.templefe.co.uk

1 Hallswelle Parade, Finchley  
Road, London, NW11 0DL





TEMPLE FORTUNE  
ESTATES

## MORE ABOUT THE PROPERTY

This exceptional home sits on a spacious plot and has been recently refurbished to an immaculate standard, boasting high-end finishes throughout. The property features a large kitchen diner perfect for family living, a 120ft rear garden with a newly laid extensive patio area, and beautiful scenic views over the green belt.

Conveniently located just 1.2 miles from St Albans city centre, with easy access to the motorway, this home is within close proximity to well-regarded schools. The property also benefits from a large driveway offering ample parking.

This property offers the best of both worlds - a peaceful residential setting with quick and easy access to major transport links, including the M1, M25, and St Albans city centre.

Council Tax Band F



## GET IN TOUCH

020 8952 0908  
079 5629 1499

admin@templefe.co.uk  
www.templefe.co.uk

1 Hallswelle Parade, Finchley  
Road, London, NW11 0DL

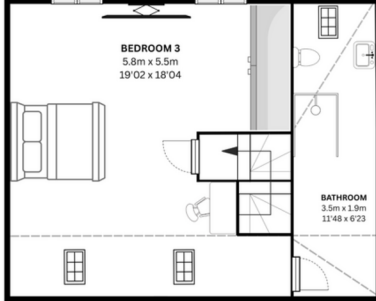




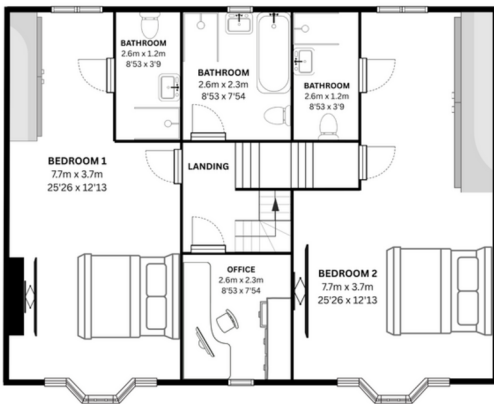
# TEMPLE FORTUNE ESTATES

APPROXIMATE INTERNAL AREA: 186.92 SQ M / 2012 SQ FT

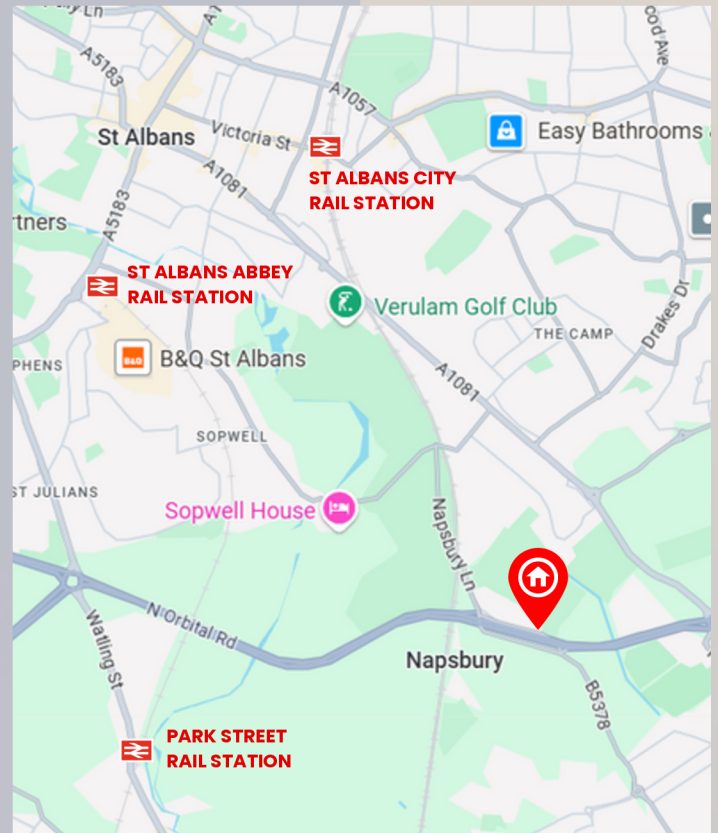
## SECOND FLOOR APPROX. AREA 38.55 SQ M / 414.97 SQ FT



## FIRST FLOOR APPROX. AREA 60.14 SQ M / 647.34 SQ FT



## GROUND FLOOR APPROX. AREA 88.23 SQ M / 949.69 SQ FT



## GET IN TOUCH

020 8952 0908  
079 8336 4090

admin@templefe.co.uk  
www.templefe.co.uk

1 Hallswelle Parade, Finchley  
Road, London, NW11 0DL