



RE/MAX
North

223 Ordsall Lane, Salford, M5 4UZ

£1,150





RE/MAX
North

£1,150

223 Ordsall Lane

Salford, M5 4UZ

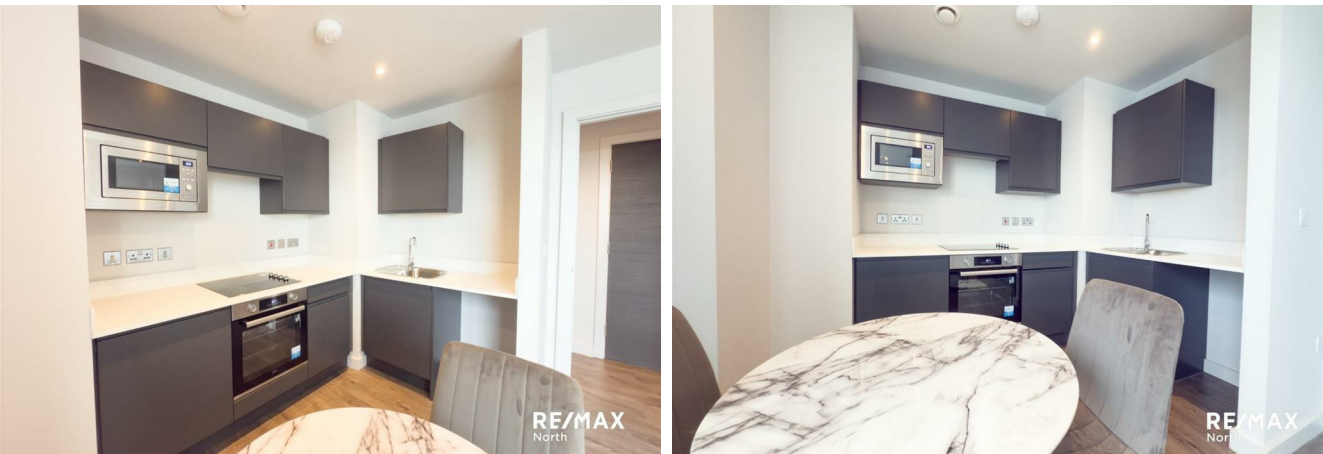
- Spacious open-plan living area
- Generously sized bedrooms
- Private balcony
- Prime location close to shopping
- Laundry Facilities
- Modern kitchen featuring quality appliances
- On-site leisure facilities
- 24 hours concierge
- Easy access to motorway
- Ideal for investor or resident

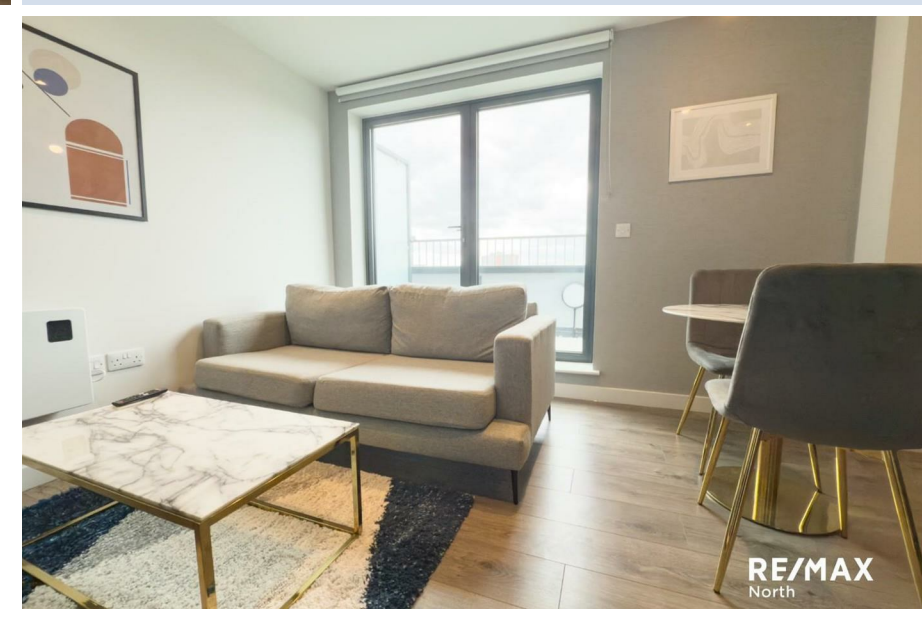
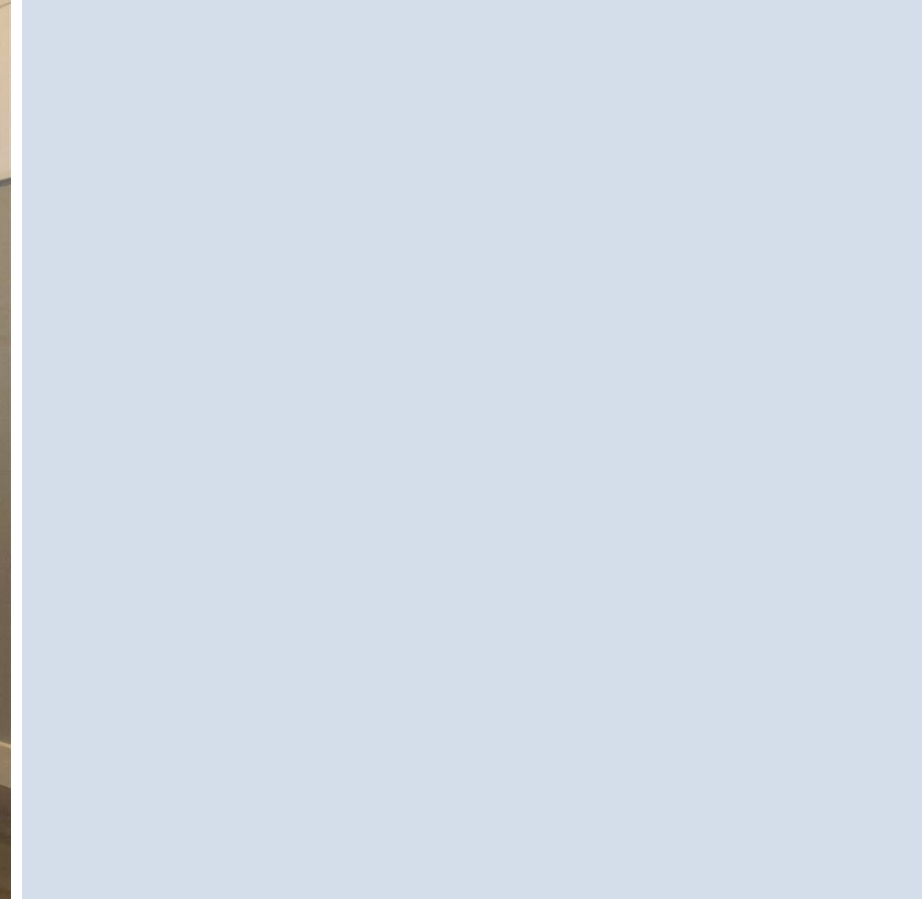
Outstanding 8th-floor 1-bedroom apartment is an exceptional residential development in the heart of Greater Manchester. The apartment is available for move-in right away.

The property offers a spacious open-plan living and kitchen area with integrated appliances, providing a sleek and modern living space. The bedroom is a well-sized double with built-in wardrobe space, and the bathroom is a luxury suite with a bath and overhead shower.

Residents will have access to a range of premium amenities, including a residents' lounge, and an on-site gym.

Vendor House is located in a highly desirable area in close proximity of Manchester City Centre. Commuters will benefit from excellent transport links, including proximity to the motorway network, providing quick and convenient access to the M60, M62, and M6. The development also offers easy access to local shops, restaurants, and the vibrant media city at Salford Quays.

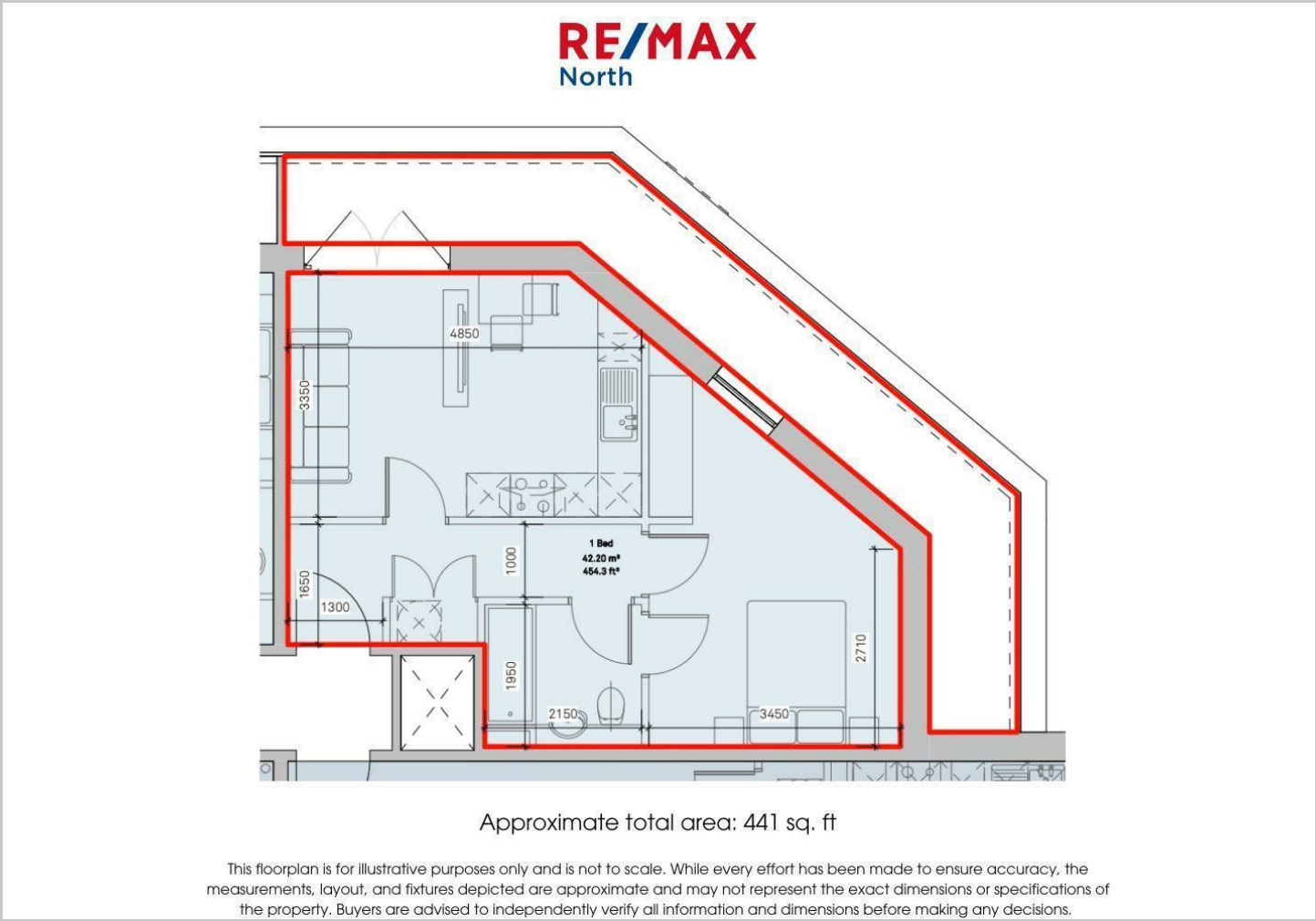






RE/MAX
North

Floor Plans



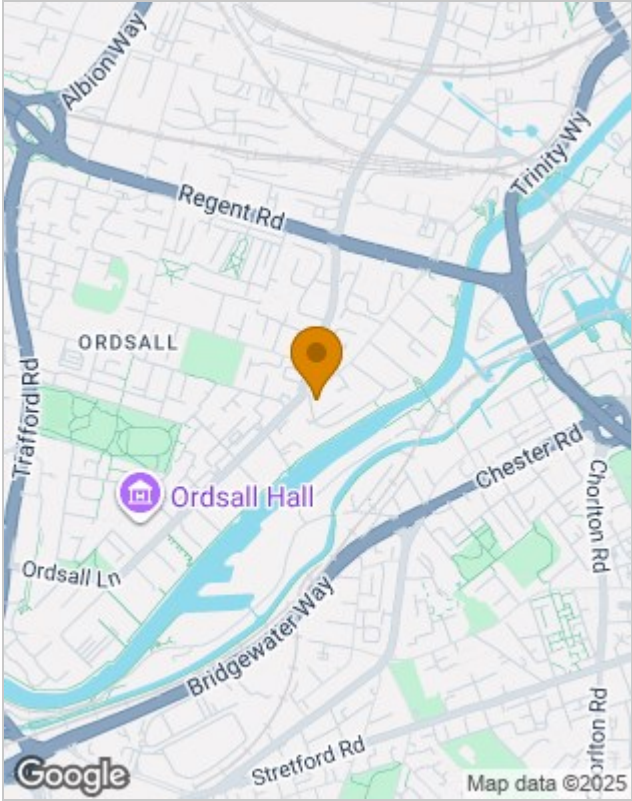
Viewing

Please contact our RE/MAX North Sales Office on +44 (0) 1618 040807 if you wish to arrange a viewing appointment for this property or require further information.

The particulars are set out as a general outline only for the guidance of intended purchasers or lessees, and do not constitute, any part of a contract. Nothing in these particulars shall be deemed to be a statement that the property is in good structural condition or otherwise nor that any of the services, appliances, equipment or facilities are in good working order. Purchasers should satisfy themselves of this prior to purchasing.

94 Phoebe Street, Salford, Greater Manchester, M5 3PH
Tel: +44 (0) 1618 040807 Email: remax.north@remax.co.uk remax.co.uk

Location Map



Energy Performance Graph

