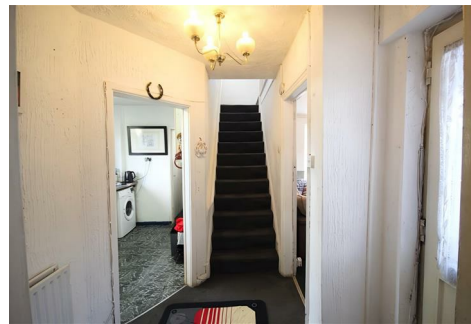




RE/MAX

Elite



39 Gower Street, Walsall, WS2 9AT

£200,000

SPACIOUS 3-BED SEMI-DETACHED IN WS2 WITH NO UPWARD CHAIN

This three-bedroom semi-detached property in the WS2 area is available with no upward chain, making it ideal for buyers looking for a project to renovate and put their personal stamp on.

Located in a residential area close to local amenities and transport links, this home offers plenty of potential for a buyer willing to invest some time and effort. With a generous back garden and spacious interior layout, it has the bones to become a great family home or investment property.

PROPERTY DETAILS:

Living Room

A cosy living space at the front of the house, featuring a large window that lets in plenty of natural light. The room offers enough space for comfortable seating but would benefit from modern updates.

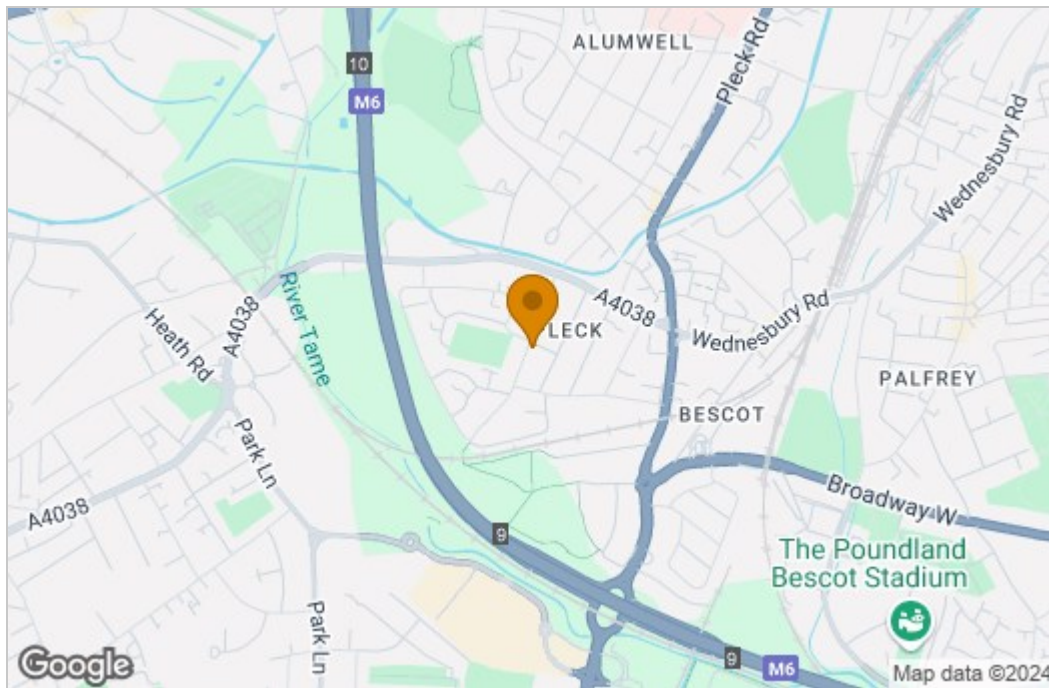
Floor Plan



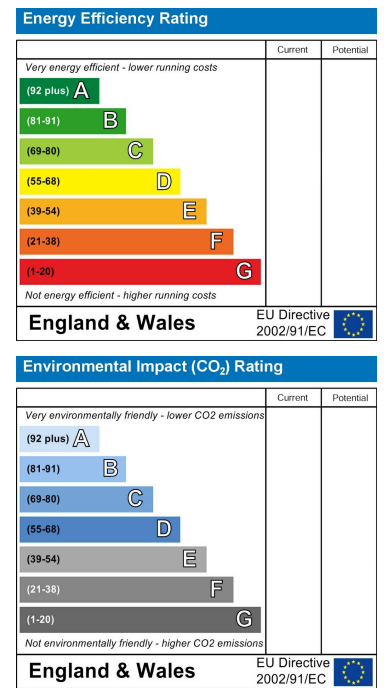
TOTAL: 93 m2
 FLOOR 1: 48 m2, FLOOR 2: 45 m2
 EXCLUDED AREAS: SCREENED PORCH: 6 m2, FIREPLACE: 1 m2
 Floor Plan Created By Cubicasa App. Measurements Deemed Highly Reliable But Not Guaranteed.



Area Map



Energy Efficiency Graph



These particulars, whilst believed to be accurate are set out as a general outline only for guidance and do not constitute any part of an offer or contract. Intending purchasers should not rely on them as statements of representation of fact, but must satisfy themselves by inspection or otherwise as to their accuracy. No person in this firm's employment has the authority to make or give any representation or warranty in respect of the property.

155 Lichfield Rd, Rushall, Walsall, Staffordshire, WS4 1HA
 Tel: +44 (0) 1922 322988 Email: elite@remax.co.uk www.remaxlocalestateagents.co.uk