



RE/MAX
Elite



154 Cavendish Road, Walsall, WS2 7HY

£180,000

Beautifully Renovated 3-bedroom Terraced House

Overview:

This charming 3-bedroom terraced house has been fully renovated to an excellent standard, boasting new flooring and carpets throughout, and all-new UPVC windows and doors. Situated in a friendly neighbourhood, this property offers a fantastic opportunity for first-time buyers or investors.

The large garden, though in need of some care, holds great potential for those with a green thumb.

Screened Porch 7'7" x 2'3" (2.32m x 0.71m)



An inviting entrance space, perfect for relaxing with a morning coffee.

Living Room 12'7" x 15'9" (3.84m x 4.82m)



Spacious and bright, featuring new flooring and large windows that flood the room with natural light.

Kitchen 10'1" x 9'3" (3.09m x 2.84m)



Dining Area 8'1" x 6'8" (2.47m x 2.04)



Adjacent to the kitchen, perfect for family meals and entertaining guests.

Master Bedroom 12'4" x 12'0" (3.76m x 3.67)



Generously sized with new carpets and large windows.

Bedroom 2 12'4" x 8'10" (3.76m x 2.70)

Bright and airy, ideal for a guest room or home office

Bedroom 3 (8'6" x 6'5" ((2.60m x 1.98)



Cosy and perfect for a child's room or nursery.

Bathroom 7'10" x 7'2" (2.40m x 2.19)



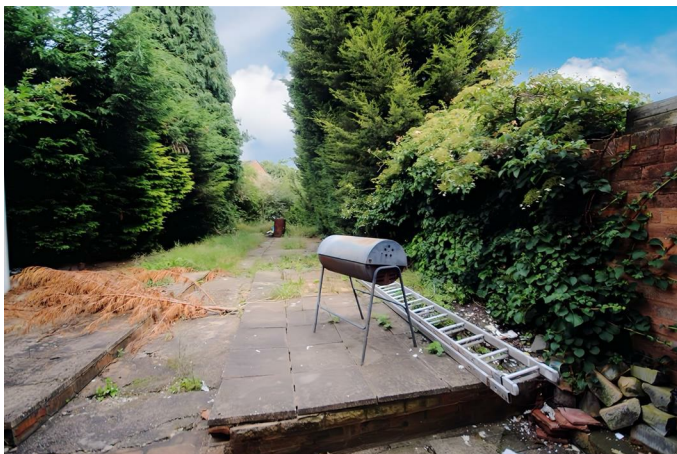
Contemporary design with a modern suite and fittings.

Exterior:

Front Garden

Well-maintained with curb appeal.

Rear Garden

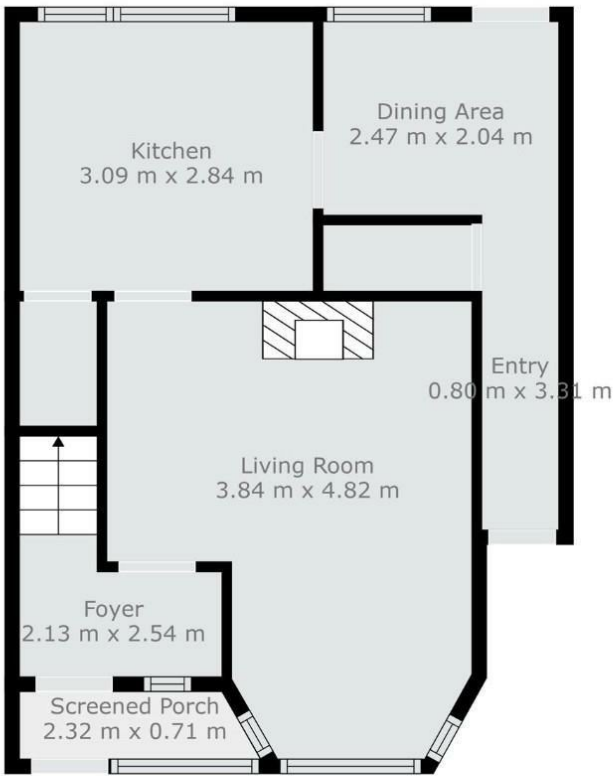


A big garden with lots of potential, perfect for gardening enthusiasts.

This property is ideal for those looking to move in with minimal fuss, thanks to its thorough renovation. Located in a desirable area, it offers easy access to local amenities and transport links.

For more information or to schedule a viewing, please contact us at REMAX Elite.

Floor Plan



Floor 1



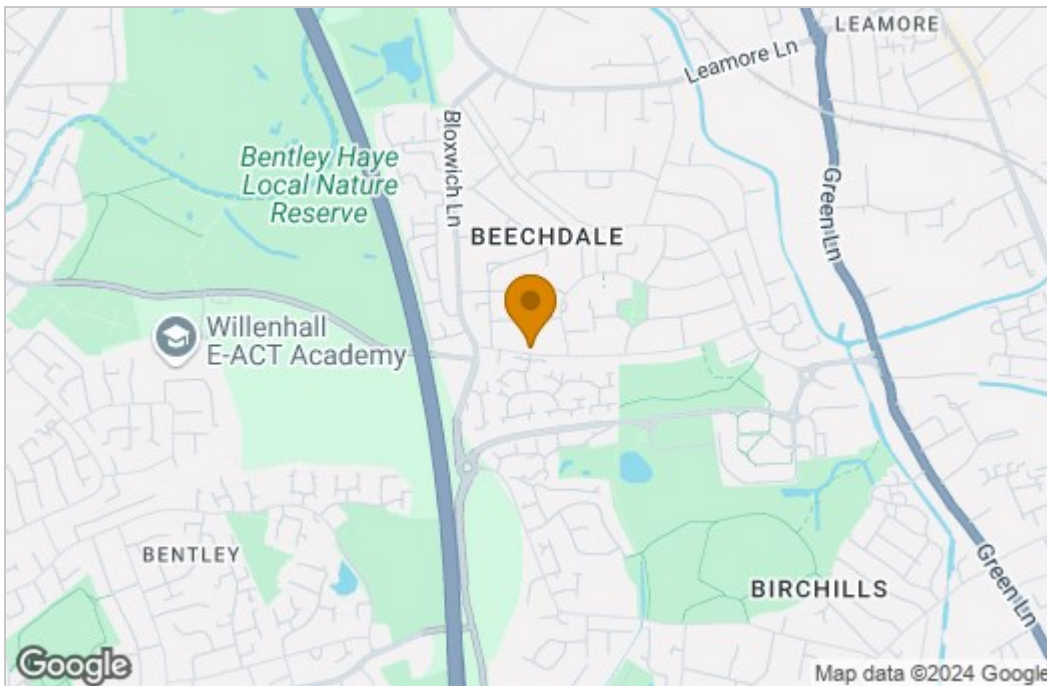
Floor 2



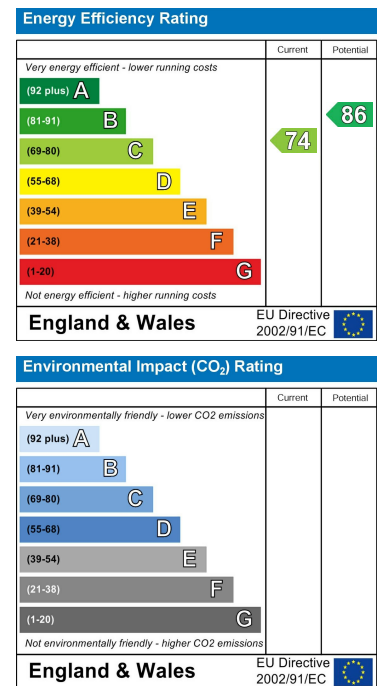
TOTAL: 79 m²
 FLOOR 1: 39 m², FLOOR 2: 40 m²
 EXCLUDED AREAS: SCREENED PORCH: 2 m²

Floor Plan Created By Cubicasa App. Measurements Deemed Highly Reliable But Not Guaranteed.

Area Map



Energy Efficiency Graph



These particulars, whilst believed to be accurate are set out as a general outline only for guidance and do not constitute any part of an offer or contract. Intending purchasers should not rely on them as statements of representation of fact, but must satisfy themselves by inspection or otherwise as to their accuracy. No person in this firm's employment has the authority to make or give any representation or warranty in respect of the property.

155 Lichfield Rd, Rushall, Walsall, Staffordshire, WS4 1HA
 Tel: +44 (0) 1922 322988 Email: elite@remax.co.uk www.remaxlocalestateagents.co.uk