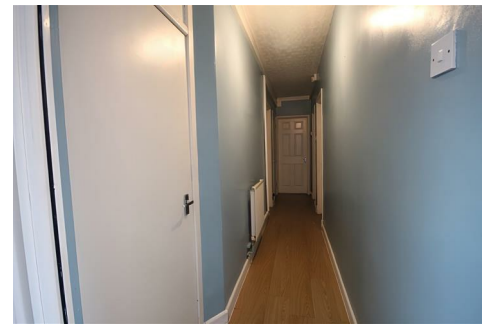




RE/MAX
Elite



12 Shackleton Road, Bloxwich, WS3 3BZ

Auction Guide £70,000

CHARMING 2-BEDROOM MAISONETTE WITH EXPANSIVE GARDEN AND DEVELOPMENT POTENTIAL

Welcome to this lovely 2-bedroom maisonette, offering a comfortable and inviting space that's ideal for first-time home buyers or smart investors. Positioned in a friendly neighborhood, it's a home that promises growth and value.

Inside, you'll find a cosy layout that's just waiting for a personal touch. The living areas are spacious enough for family life, while the natural light adds a pleasant warmth throughout the day. Outside, the large garden provides a peaceful spot for relaxation and fun outdoor activities.

Plus, there's an additional plot of land included, perfect for those who might want to add a sizeable garage or consider expanding the garden for even more outdoor enjoyment.

** EPC TO BE UPLOADED **

Foyer 8'2" m x 3'7" (2.51 m x 1.11)

Living Room 12'11" m x 13'1" (3.94 m x 3.99)

Primary Bedroom 10'9" m x 12'1" (3.28 m x 3.69)

Bedroom 10'6" m x 9'10" (3.22 m x 3.00)

Kitchen 9'4" m x 8'6" (2.86 m x 2.61)

Bath 5'10" m x 5'8" (1.78 m x 1.75)

Extension 9'8" m x 12'4" (2.95m m x 3.78)

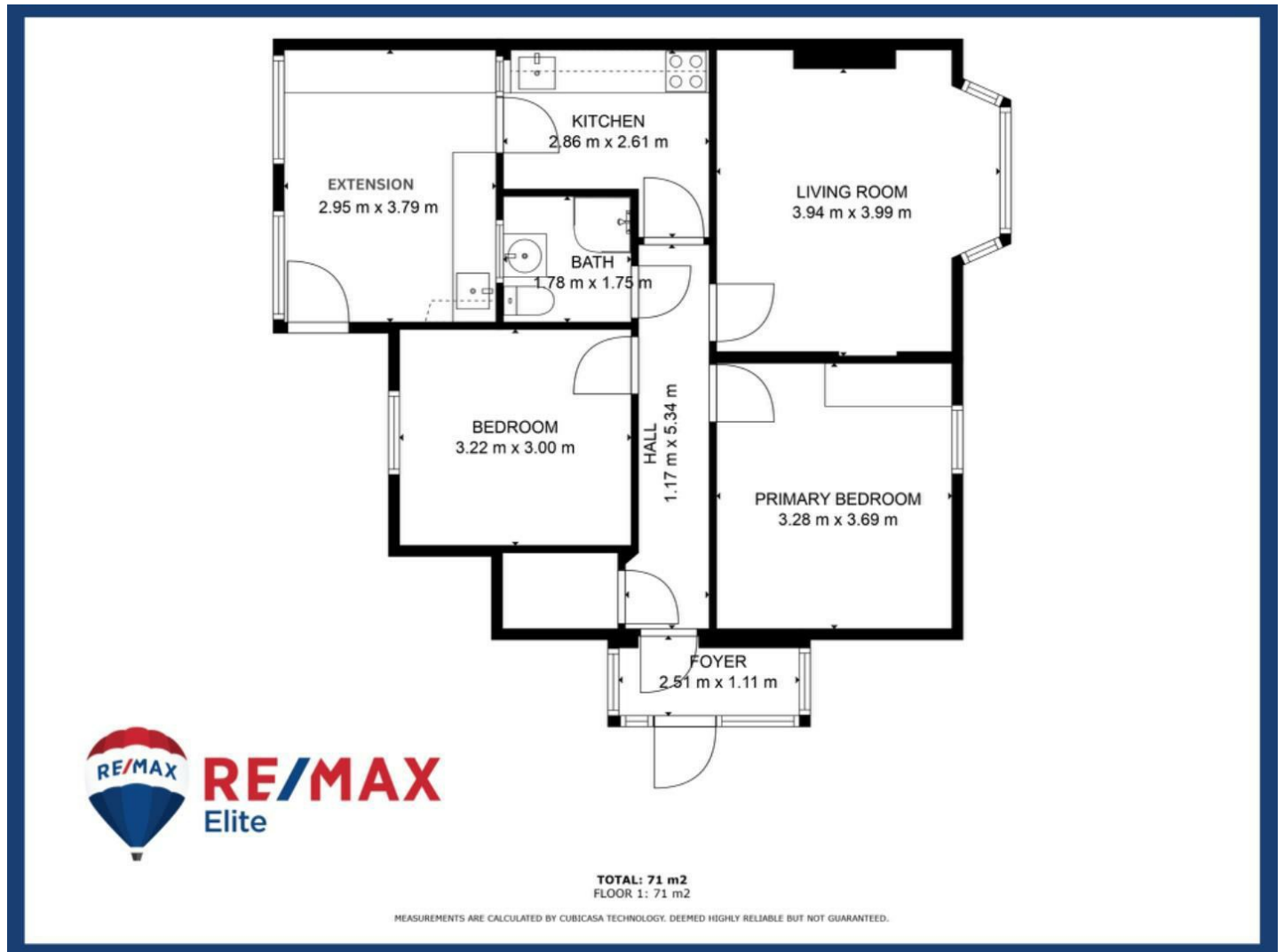
Auctioneer Comments

This property is for sale by the Modern Method of Auction. Should you view, offer or bid on the property, your information will be shared with the Auctioneer, iamsold Limited. This method of auction requires both parties to complete the transaction within 56 days of the draft contract for sale being received by the buyers solicitor. This additional time allows buyers to proceed with mortgage finance (subject to lending criteria, affordability and survey). The buyer is required to sign a reservation agreement and make payment of a non-refundable Reservation Fee. This being 4.5% of the purchase price including VAT, subject to a minimum of £6,600.00 including VAT. The Reservation Fee is paid in addition to purchase price and will be considered as part of the chargeable consideration for the property in the calculation for stamp duty liability. Buyers will be required to go through an identification verification process with iamsold and provide proof of how the purchase would be funded. This property has a Buyer Information Pack which is a collection of documents in relation to the property. The documents may not tell you everything you need to know about the property, so you are required to complete your own due diligence before bidding. A sample copy of the Reservation Agreement and terms and conditions are also contained within this pack. The buyer will also make payment of £300 including VAT towards the preparation cost of the pack, where it has been provided by iamsold. The property is subject to an undisclosed Reserve Price with both the Reserve Price and Starting Bid being subject to change.

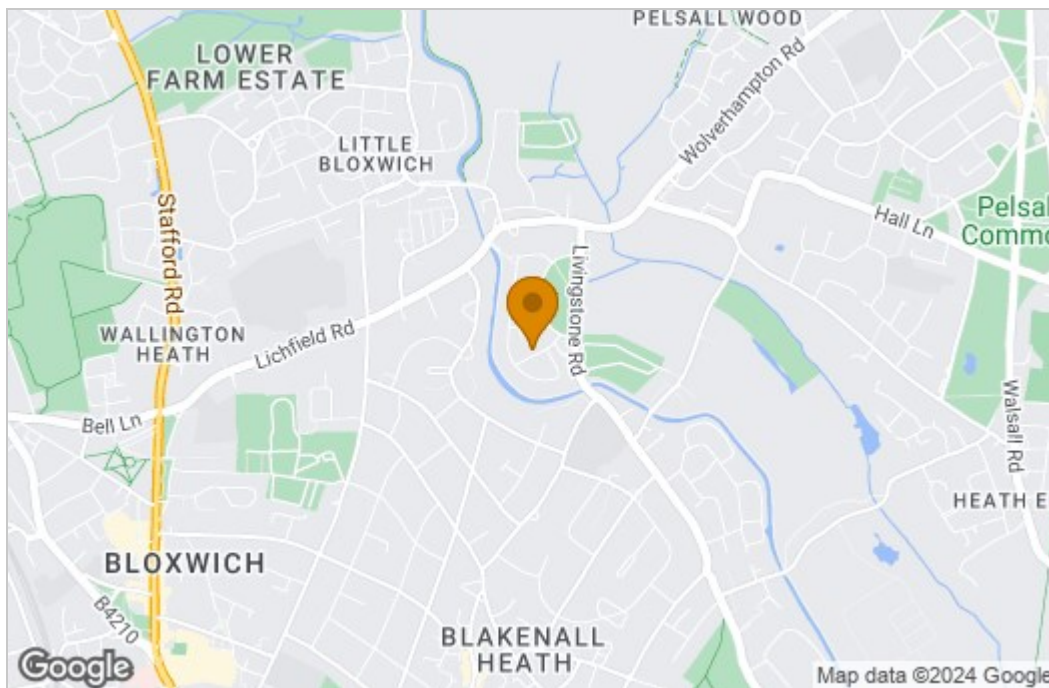
Referral Arrangements

The Partner Agent and Auctioneer may recommend the services of third parties to you. Whilst these services are recommended as it is believed they will be of benefit; you are under no obligation to use any of these services and you should always consider your options before services are accepted. Where services are accepted the Auctioneer or Partner Agent may receive payment for the recommendation and you will be informed of any referral arrangement and payment prior to any services being taken by you.

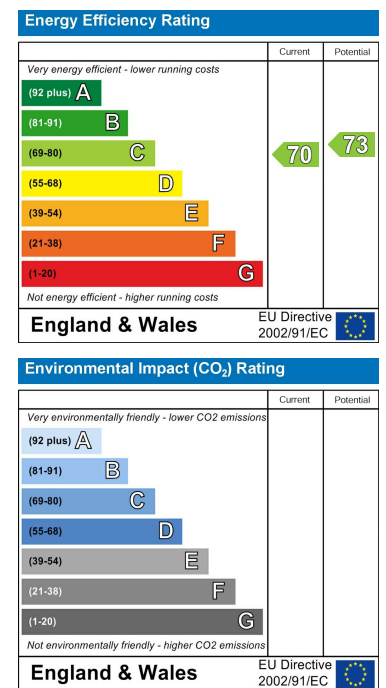
Floor Plan



Area Map



Energy Efficiency Graph



These particulars, whilst believed to be accurate are set out as a general outline only for guidance and do not constitute any part of an offer or contract. Intending purchasers should not rely on them as statements of representation of fact, but must satisfy themselves by inspection or otherwise as to their accuracy. No person in this firm's employment has the authority to make or give any representation or warranty in respect of the property.