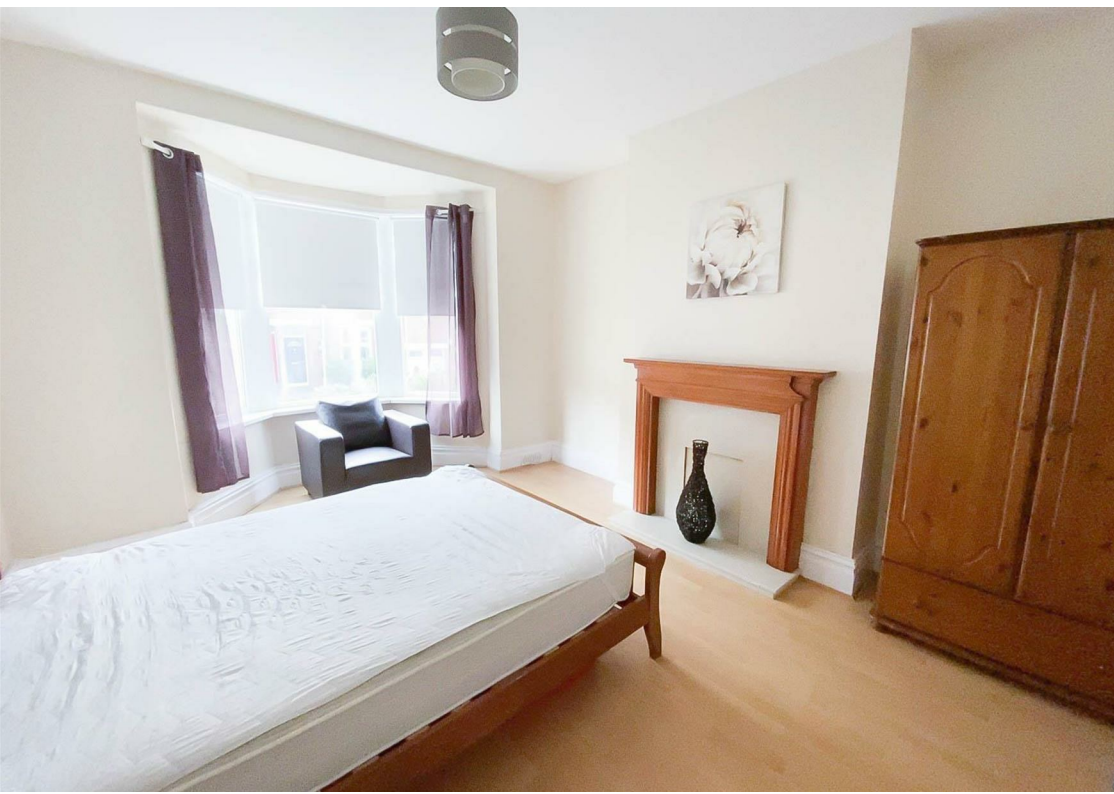






- Ground Floor Flat
- Gas Central Heating
- Council Tax A
- Private Yard
- Attractive Rent
- Two Bedrooms
- Double Glazed
- Part Furnished
- Central Location
- View Via Agent





** Video Tour on our YouTube Channel |
<https://youtu.be/HUleYx48kjk> **

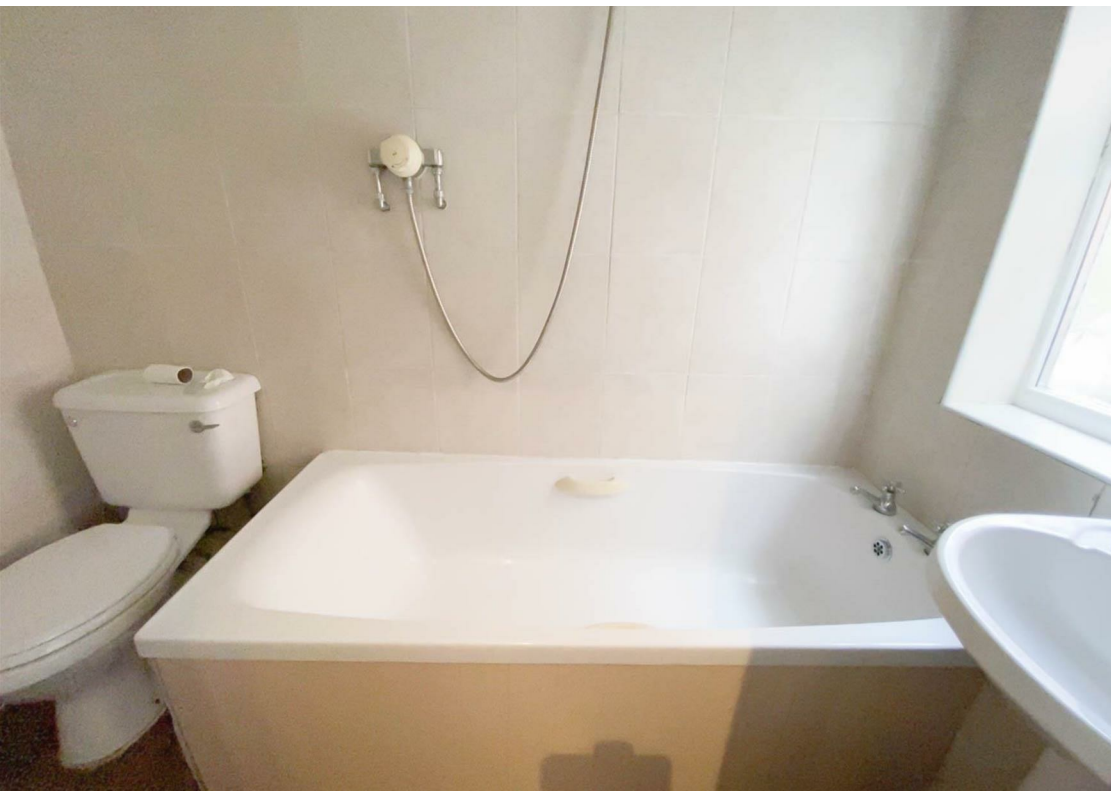
TWO BEDROOM GROUND FLOOR FLAT AVAILABLE

Jan Forster Lettings are delighted to offer for rental this two bedroom ground floor flat, conveniently located for access to all local amenities and travel links into Newcastle, Gateshead and Sunderland. The property is offered furnished and briefly comprises, entrance hallway, lounge, modern fitted kitchen, two bedrooms and a family bathroom with overhead shower and bath. Externally there is a yard to the rear.

For further information on this property, please call our Low Fell office on 0191 487 0800.

Covid-19 Viewing Guidelines

For the safety of our clients, yourselves and our staff we are currently only allowing viewings to go ahead if viewers wear appropriate PPE (masks and gloves). Social distancing rules must also be adhered to at all times. Where possible we will encourage vendors to leave the property while the viewing is going ahead. We also will only allow 2 people to view a property at any one time. We may share contact numbers where requested by NHS to prevent the spread of Covid-19.



Ground Floor

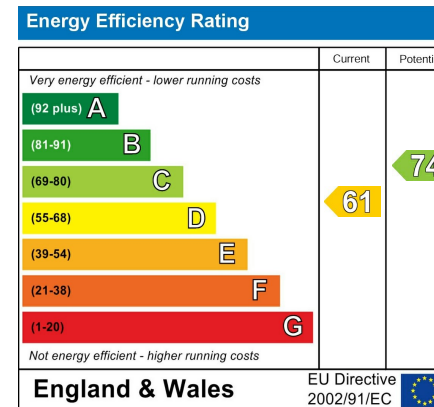


Living Room 13'3" x 11'3" (4.05 x 3.45)

Kitchen 8'0" x 8'0" (2.44 x 2.44)

Bedroom One 14'0" x 12'7" (4.27 x 3.85)

Bedroom Two 10'3" x 7'8" (3.13 x 2.34)



The difference between house and home

You may download, store and use the material for your own personal use and research. You may not republish, retransmit, redistribute or otherwise make the material available to any party or make the same available on any website, online service or bulletin board of your own or of any other party or make the same available in hard copy or in any other media without the website owner's express prior written consent. The website owner's copyright must remain on all reproductions of material taken from this website.

Gosforth

0191 236 2070

Newcastle

0191 284 4050

High Heaton

0191 270 1122

Tynemouth

0191 257 2000

Low Fell

0191 487 0800

Property Management Centre

0191 236 2680



www.janforsterestates.com

