





- Spacious Maisonette
- Well-Presented
- Popular Area
- Four Bedrooms
- One Bathroom
- Shower Room
- Dressing Area
- Local Facilities
- Transport Links
- Council Tax Band *A*





** Video Tour on our YouTube Channel |
<https://youtu.be/Wb3fKNTnptA> **

Jan Forster Estates welcome to the market this well-presented four bedroom maisonette. Located within a popular residential area, it is close to excellent transport links and local amenities, including Saltwell Park. The property will appeal to a variety of buyers- first time buyers and investors alike.

Briefly comprising to to first floor;- spacious lounge with access to bedroom four/office room, and bedroom one which benefits from a handy dressing room with storage. There is also an inner hallway leading to the family bathroom and the kitchen with floor and wall units. To the second floor, there are further two bedrooms and a modern shower room. The property benefits from gas central heating and double glazing. Externally, there is a shared yard to the rear.

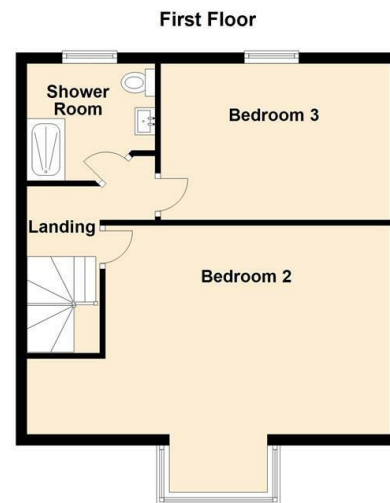
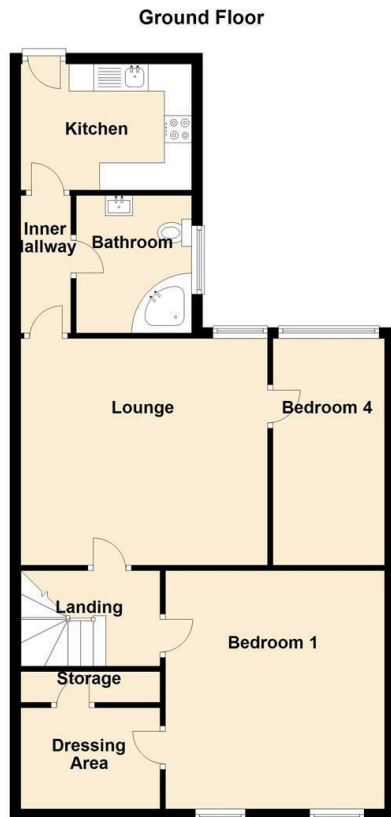
Early viewings come recommended to appreciate the accommodation on offer. To book yours or for more information, call our Gateshead office on 0191 487 0800.

Tenure

The agent understands the property to be leasehold. However, this should be confirmed with a licenced legal representative.

Council Tax band *A*





Lounge 14'9" x 13'3" (4.50 x 4.04)

Kitchen 10'8" x 7'9" (3.26 x 2.38)

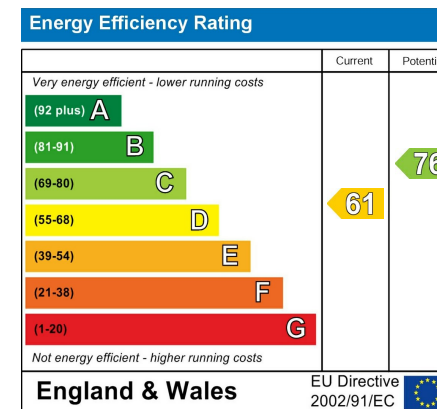
Bedroom One 14'4" x 13'2" (4.39 x 4.02)

Dressing Room 8'4" x 6'0" (2.55 x 1.84)

Bedroom Two 18'4" x 10'2" (5.59 x 3.12)

Bedroom Three 13'8" x 8'3" (4.18 x 2.53)

Bedroom Four/Study 13'7" x 6'8" (4.16 x 2.05)



The difference between house and home

You may download, store and use the material for your own personal use and research. You may not republish, retransmit, redistribute or otherwise make the material available to any party or make the same available on any website, online service or bulletin board of your own or of any other party or make the same available in hard copy or in any other media without the website owner's express prior written consent. The website owner's copyright must remain on all reproductions of material taken from this website.



www.janforsterestates.com

Gosforth

0191 236 2070

Newcastle

0191 284 4050

High Heaton

0191 270 1122

Tynemouth

0191 257 2000

Low Fell

0191 487 0800

Property Management Centre

0191 236 2680

