





- No Onward Chain
- Close to Local Amenities
- Popular Location
- Transport Links Nearby
- Council Tax Band *A*
- Two Bedrooms
- Ground Floor
- Gas Central Heating
- Leasehold





**** Video Tour on our YouTube Channel |
<https://youtu.be/qJMEJ0m6zLo>****

Jan Forster Estates offer for sale with the benefit of no upper chain this two bedroom ground floor flat. The property is positioned in a popular residential area, close to a wide range of amenities and excellent transport links. Saltwell Park is also within walking distance.

Internally the property briefly comprises; entrance hallway, good sized lounge, two double bedrooms, kitchen with a range of wall and floor units and a bathroom WC with three piece suite and a shower over the bath. The property further benefits from gas central heating and double glazing.

Externally there is a town garden to the front and a private yard to the rear.

The property will appeal to a variety of buyers and early viewings come highly recommended. For more information and to book a viewing please call our Low Fell team on 0191 487 0800.

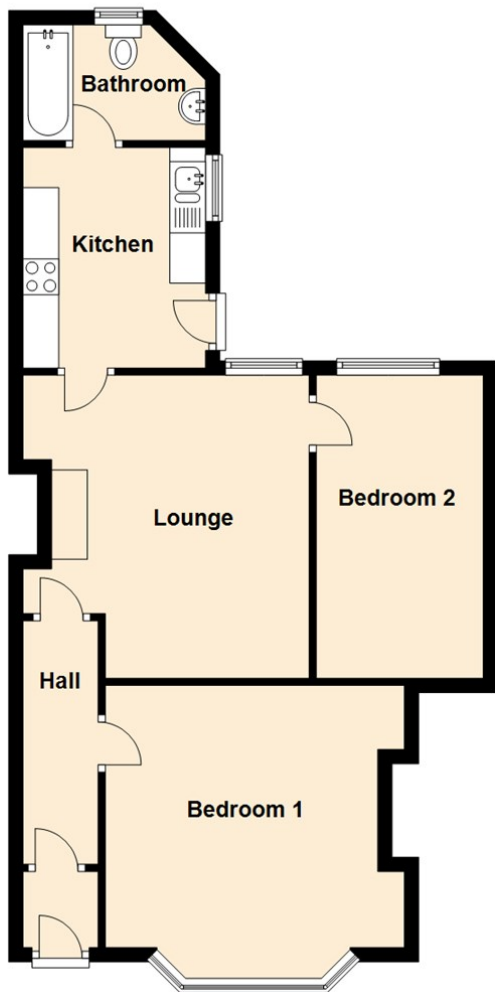
Tenure

The agent understands the property to be leasehold. However, this should be confirmed with a licensed legal representative.

Council tax band *A*.



Ground Floor



The difference between house and home

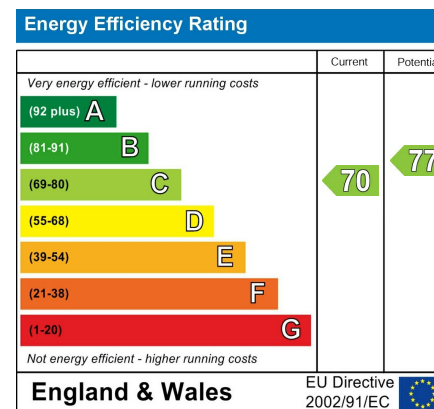
You may download, store and use the material for your own personal use and research. You may not republish, retransmit, redistribute or otherwise make the material available to any party or make the same available on any website, online service or bulletin board of your own or of any other party or make the same available in hard copy or in any other media without the website owner's express prior written consent. The website owner's copyright must remain on all reproductions of material taken from this website.

Lounge 13'1" x 13'10" (3.99 x 4.23)

Kitchen 10'1" x 8'4" (3.09 x 2.55)

Bedroom One 13'7" x 11'11" (4.15 x 3.64)

Bedroom Two 7'7" x 13'5" (2.33 x 4.10)



Gosforth	0191 236 2070
Newcastle	0191 284 4050
High Heaton	0191 270 1122
Tynemouth	0191 257 2000
Low Fell	0191 487 0800
Property Management Centre	0191 236 2680



www.janforsterstates.com

