





- Leasehold
- Council Tax Band *A*
- Three Bedrooms
- Popular Location
- Transport Links Nearby
- Private Rear Yard
- No Upper Chain
- Gas Central Heating
- Double Glazing
- Call For More Information





** Video Tour on our YouTube Channel |
<https://youtu.be/u6LwDxqd2EU> **

Jan Forster Estates welcome to the market this three bedroom upper flat, offered for sale with the benefit of no upper chain. Located within a popular residential part of Gateshead close to excellent transport and local amenities.

Internally the property briefly comprises; entrance and stairs to the first floor, lounge with feature fireplace, kitchen with modern wall and floor units and integrated oven and hob, three good sized bedrooms and a bathroom WC with three piece suite. The property further benefits from gas central heating and double glazing.

Externally there is on street parking to the front and a private yard to the rear.

For more information and to book viewing please call our Gateshead office on 0191 487 0800.

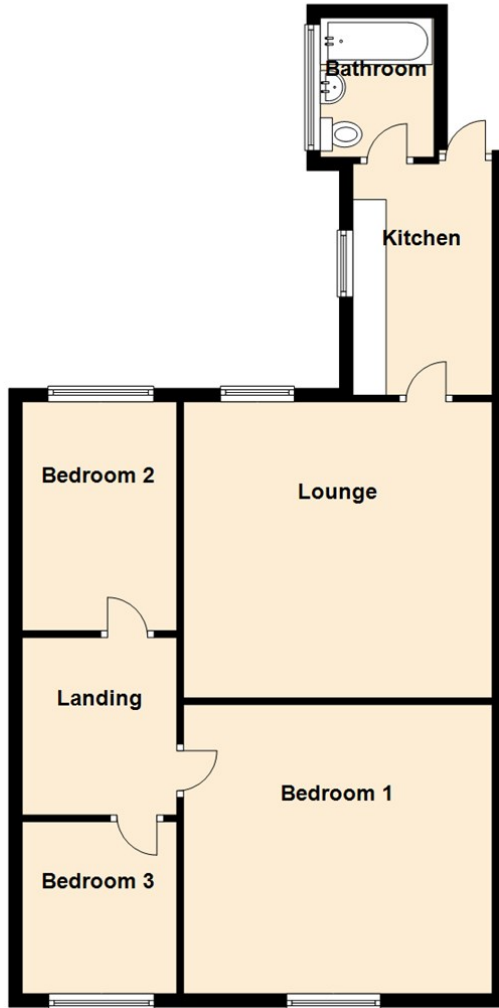
Tenure

The agent understands the property to be leasehold. However, this should be confirmed with a licenced legal representative

Council Tax band *A*



First Floor



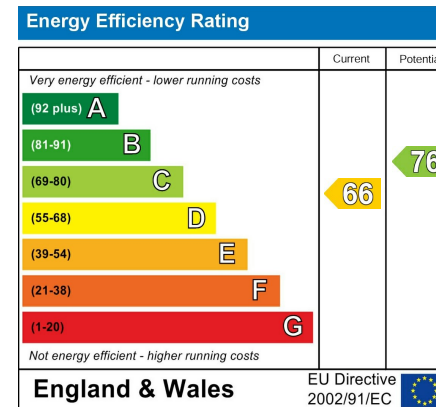
Lounge 14'6" x 15'1" (4.43 x 4.62)

Kitchen 11'4" x 6'7" (3.47 x 2.03)

Bedroom One 15'1" x 14'2" (4.62 x 4.34)

Bedroom Two 11'3" x 8'5" (3.44 x 2.59)

Bedroom Three 8'2" x 7'7" (2.51 x 2.32)



The difference between house and home

You may download, store and use the material for your own personal use and research. You may not republish, retransmit, redistribute or otherwise make the material available to any party or make the same available on any website, online service or bulletin board of your own or of any other party or make the same available in hard copy or in any other media without the website owner's express prior written consent. The website owner's copyright must remain on all reproductions of material taken from this website.

Gosforth 0191 236 2070
Newcastle 0191 284 4050
High Heaton 0191 270 1122
Tynemouth 0191 257 2000
Low Fell 0191 487 0800
Property Management Centre 0191 236 2680

