



# Greenfields



## Field End Road, Ruislip

### Price Guide £650,000

Introducing a remarkable opportunity to acquire this immaculately presented three-bedroom semi-detached house situated in a sought-after neighbourhood. Boasting a harmonious blend of modern sophistication and classic charm, this property has been recently refurbished to the highest standard, exuding a fresh and inviting ambience throughout.

Upon entering, you are greeted by an elegant oak floor that spans the ground floor, creating a seamless flow between the living spaces. The modern kitchen is a culinary delight, featuring sleek cabinetry, premium countertops, and state-of-the-art appliances, perfect for whipping up gourmet meals or entertaining guests.

The spacious living room offers a cosy retreat, ideal for relaxation or lively gatherings, while the adjoining dining area provides a versatile space for family meals or formal entertaining. Natural light floods the interior, creating a bright and airy atmosphere that enhances the sense of space and comfort.

Upstairs, the three well-appointed bedrooms offer serene retreats, each providing ample storage and personal sanctuary. The modern bathroom is a luxurious haven, showcasing contemporary fixtures and a double shower for ultimate convenience.

Externally, the property benefits from off-street parking, ensuring convenience for residents and guests alike. The beautiful garden presents a tranquil outdoor oasis, perfect for al fresco dining, gardening, or simply basking in the sunshine.

In addition to its aesthetic appeal, this property boasts a prime location, offering easy access to local amenities, schools, parks, and transport links, making it an ideal choice for families, professionals, or investors seeking a comfortable and convenient lifestyle.

In summary, this three-bedroom semi-detached house represents a rare opportunity to own a meticulously maintained property in pristine condition, ready to accommodate discerning buyers looking for modern living.

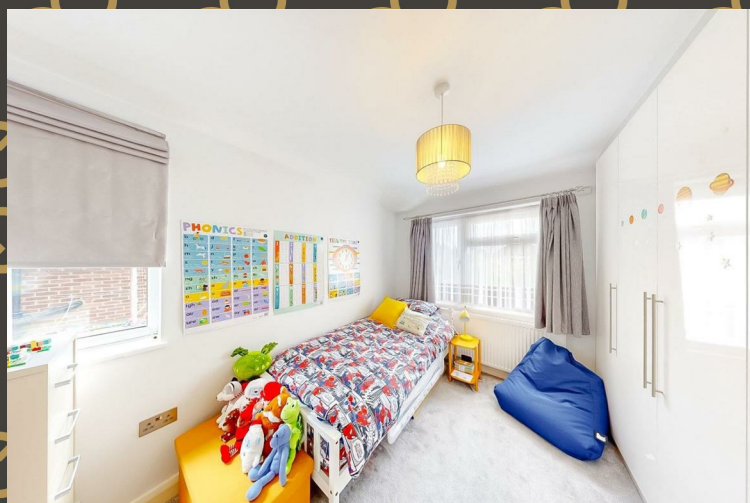
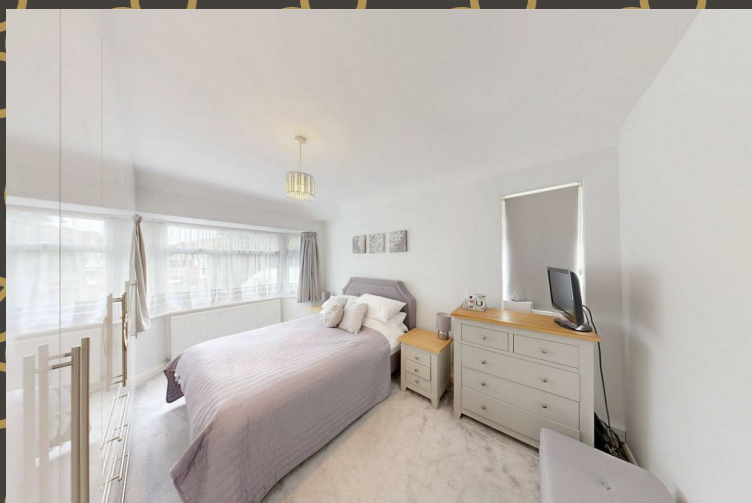
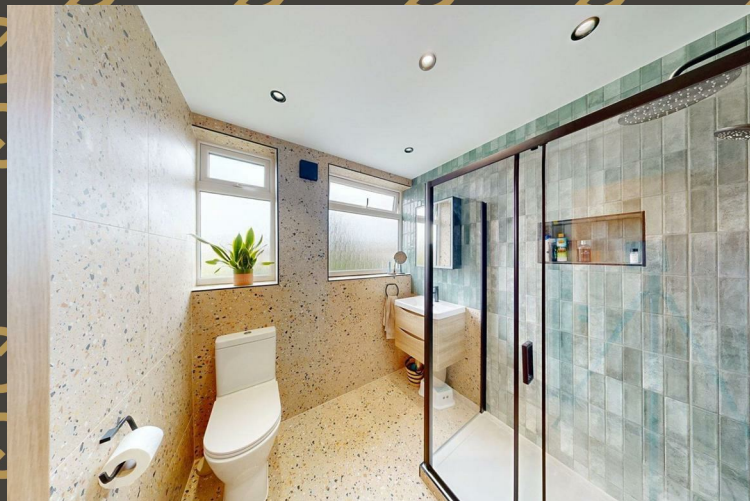
- Three Bedrooms
- Semi Detached
- Immaculate Condition
- Oak flooring
- Recently Refurbished
- Modern Kitchen
- Modern Bathroom
- Off Street Parking
- Beautiful Garden

### VIEWINGS

*Please contact Greenfields on 01895 628 560 if you wish to arrange a viewing appointment for this property or require further information.*



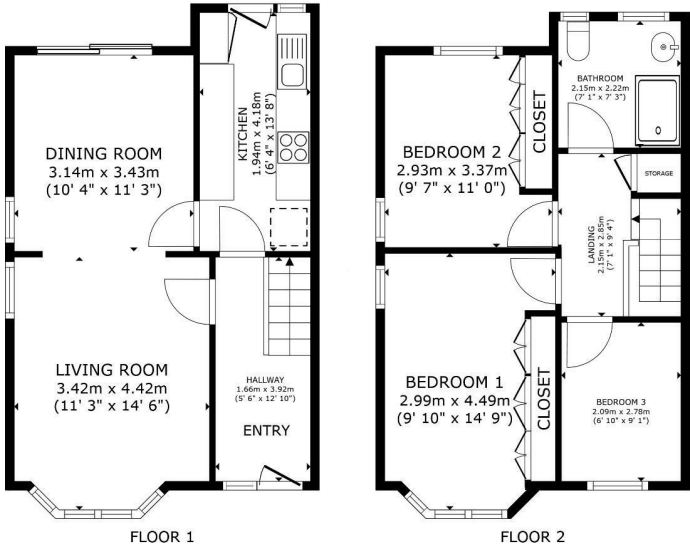
# Field End Road, Ruislip



## VIEWINGS

Please contact Greenfields on 01895 628 560 if you wish to arrange a viewing appointment for this property or require further information.

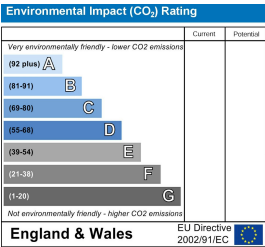
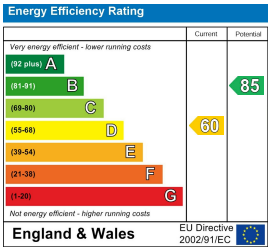
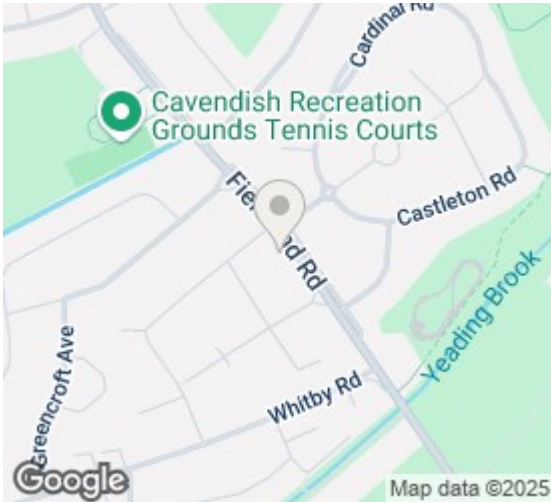




 **Greenfields**

GROSS INTERNAL AREA  
FLOOR 1 41.0 m<sup>2</sup> (441 sq.ft.) FLOOR 2 40.8 m<sup>2</sup> (439 sq.ft.)  
TOTAL - 81.8 m<sup>2</sup> (881 sq.ft.)  
SIZES AND DIMENSIONS ARE APPROXIMATE, ACTUAL MAY VARY.

 **Matterport**



These particulars, whilst believed to be accurate are set out as a general outline only for guidance and do not constitute any part of an offer or contract. Intending purchasers should not rely on them as statements of representation of fact, but must satisfy themselves by inspection or otherwise as to their accuracy. No person in this firms employment has the authority to make or give any representation or warranty in respect of the property.

**115 Victoria Road, Ruislip, Middlesex, HA4 9BN**  
**Tel: 01895 628 560 Email: [info@greenfieldsproperty.co.uk](mailto:info@greenfieldsproperty.co.uk) [www.greenfieldsproperty.co.uk](http://www.greenfieldsproperty.co.uk)**