



Greenfields



Diamond Road, Ruislip HA4

£2,200 Per Month



Ideally situated on a quiet residential road in South Ruislip is this three bedroom end of terrace house. The house is well presented and has the benefit of off-street parking to the front as well as a double garage to the rear a large log cabin in the rear garden.

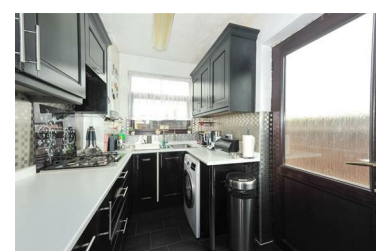
Accommodation is arranged over two floors, on the ground floor access is via a storm porch into the hallway. There is a through lounge and a modern fitted kitchen with access to the rear.

On the first floor there are three bedrooms one of which has built in wardrobes. There is a modern bathroom suite with a large jacuzzi style bathtub, a low level wc, a bidet and wash hand basin.

OUTSIDE

The front of the property is block paved for off street parking while to the rear there is a paved patio area for garden furniture. There is also a brick built double garage with power and light. There is a large fully insulated log cabin with power and light in the rear garden.

- Three Bedrooms
- Through Lounge
- Modern Bathroom
- Summer house
- Excellent Condition
- Modern Kitchen
- Garage
- Off Street Parking



115 Victoria Road, Ruislip, Middlesex, HA4 9BN

Tel: 01895 628 560 Email: info@greenfieldsproperty.co.uk www.greenfieldsproperty.co.uk