



## Tangmere Mews Broad Lane, Bracknell

Bracknell

Guide Price **£450,000**





Property Sense are proud to present modern elegance meets tranquility in this spacious 3-bed semi-detached with an en-suite, walled garden, and allocated parking—a perfect blend of style, comfort, and convenience.

Council Tax band: E

Tenure: Freehold

EPC Energy Efficiency Rating: C

EPC Environmental Impact Rating: C

- Private Garden
- Excellent transport links
- Allocated Parking
- Well present throughout
- Built in Wardrobes
- Fibre-optic broadband



## Living Room

14' 11" x 10' 4" (4.55m x 3.15m)

Welcome to the heart of this charming home, where comfort meets style in perfect harmony. Step into the inviting embrace of the spacious living room, where every detail has been thoughtfully curated to create a haven of relaxation and elegance.

## Kitchen

14' 9" x 7' 10" (4.50m x 2.40m)

From morning coffee to gourmet dinners, this kitchen is sure to become the heart of your home—a place where memories are made, and culinary dreams come to life. Welcome to a culinary paradise that's as beautiful as it is functional—a kitchen that's truly a chef's delight.

## Bedroom 1

10' 6" x 8' 10" (3.20m x 2.70m)

Escape to your own private oasis of tranquility and comfort—the luxurious bedroom retreat that promises to soothe your senses and envelop you in a cocoon of serenity. Step inside and leave the cares of the world behind as you enter this haven of relaxation and rejuvenation.

## Bedroom 2

8' 7" x 8' 2" (2.61m x 2.50m)

For those who value comfort and style, this bedroom is the ultimate retreat—a place where you can escape the hustle and bustle of everyday life and indulge in a little pampering and self-care. Welcome to your own personal sanctuary—a bedroom that's designed to delight the senses and soothe the soul.

## Bedroom 3

8' 2" x 5' 11" (2.50m x 1.80m)

As you cross the threshold, you're greeted by an air of understated elegance. Soft, neutral tones adorn the walls, creating a calming backdrop that sets the stage for restful slumber. Plush carpeting beneath your feet offers a luxurious touch, inviting you to sink in and unwind after a long day.





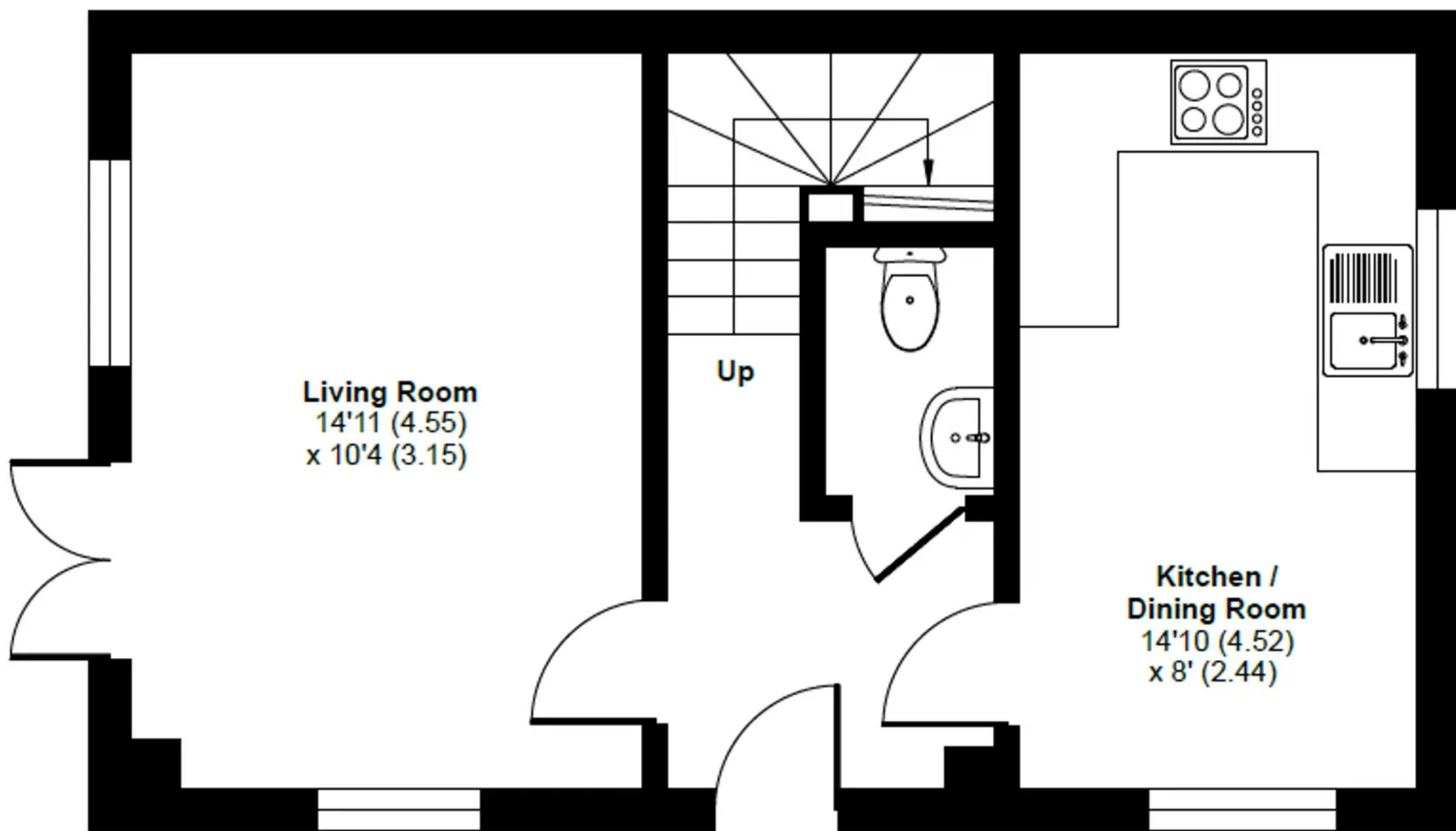


## GARDEN

From intimate gatherings to quiet moments of solitude, the walled garden is a place where memories are made and cherished. Welcome to your own private paradise—a garden retreat that's as enchanting as it is inviting, just waiting to be explored and enjoyed.

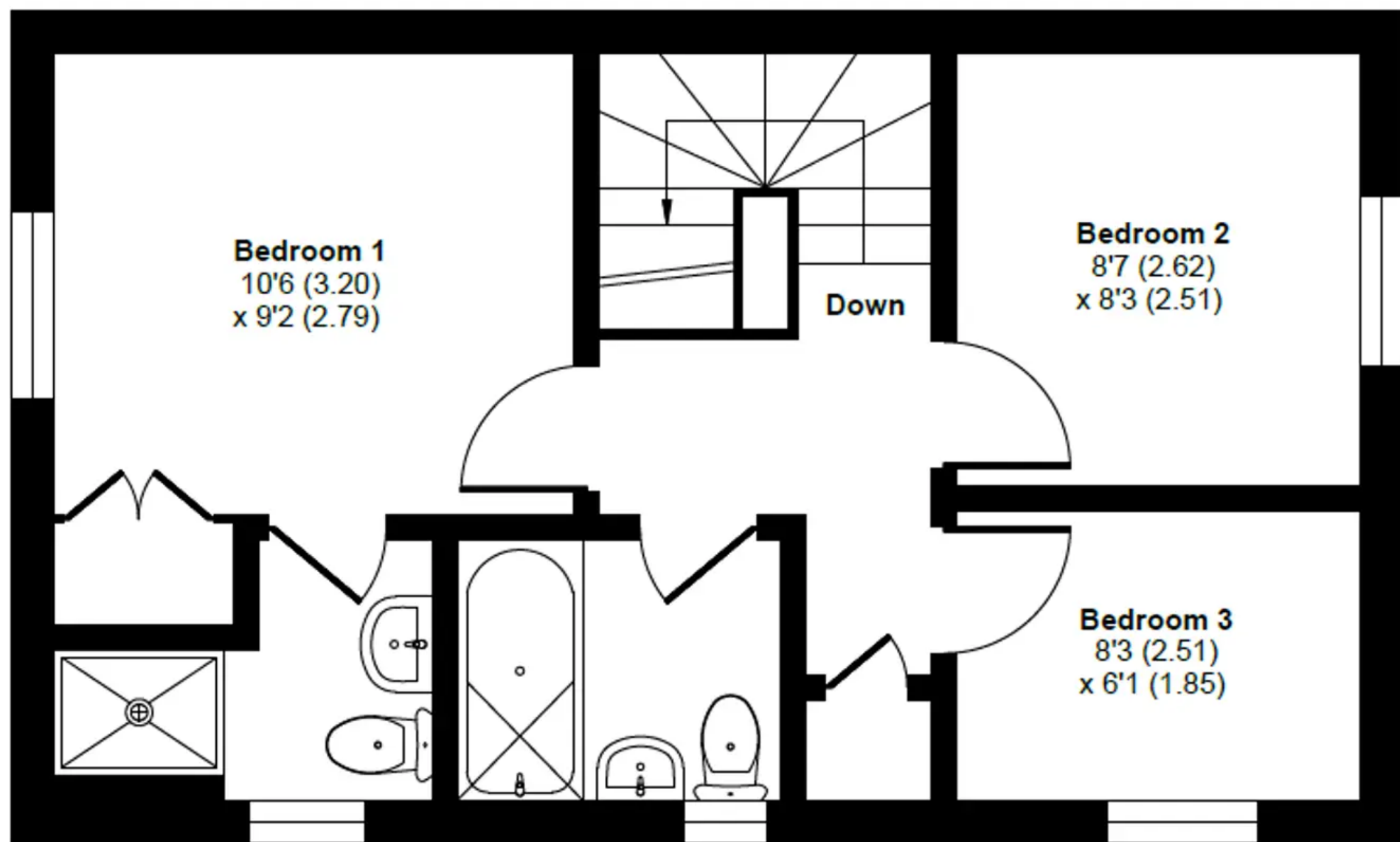






**GROUND FLOOR**





FIRST FLOOR