



CEDAR GRANGE, Envile Road, Kinver, DY7 6BN

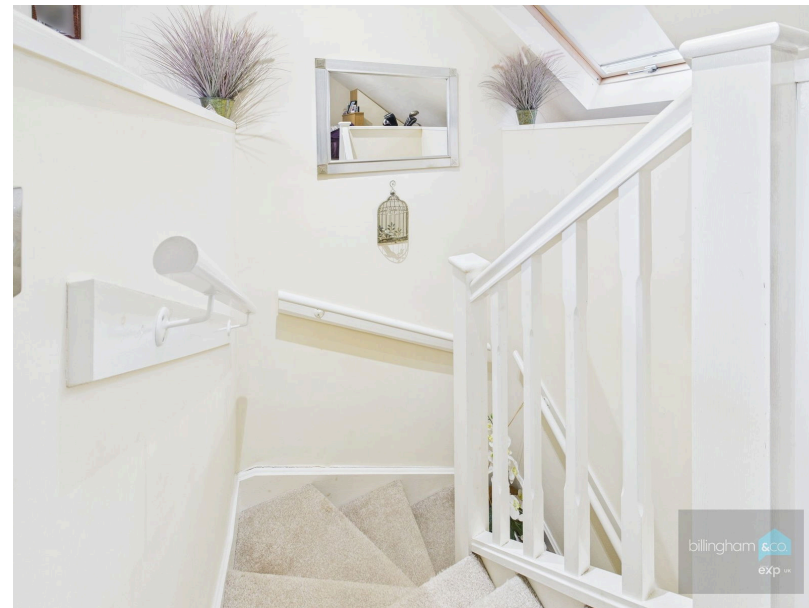
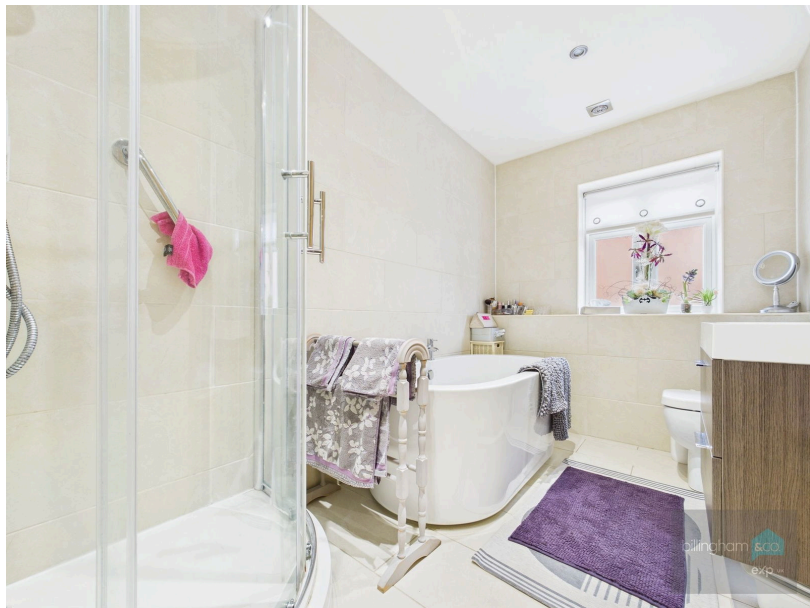
Offers In Region Of £225,000

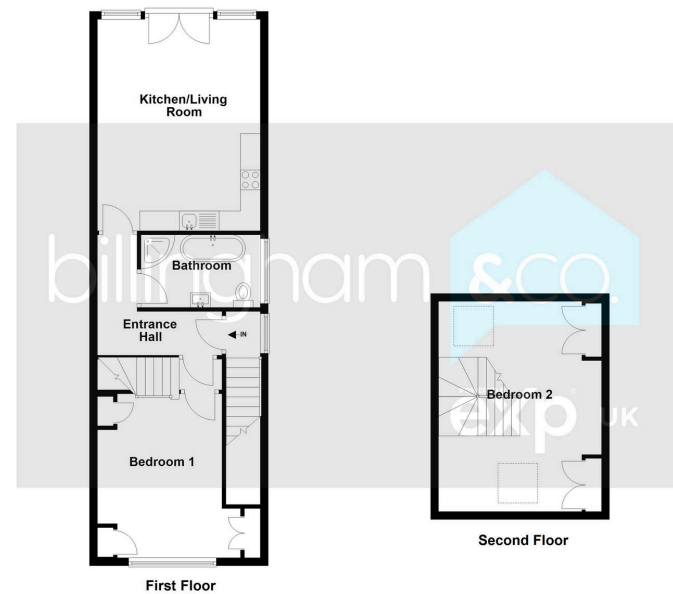
🛏 2 🚿 1 🚗 1

- A beautifully presented, unique TWO BEDROOM DUPLEX APARTMENT.
- Living accommodation to include an open plan Living Room having a modern
- MODERN BATHROOM having a beautiful suite.
- Having NO UPWARD CHAIN.
- Situated within close proximity to local amenities.
- Both Bedrooms having modern fitted wardrobes.
- Secure parking found to the rear.
- EPC Rating TBC.



A beautifully presented, unique TWO BEDROOM DUPLEX APARTMENT situated in Kinver and close to all local amenities. Offering READY TO MOVE IN LIVING ACCOMODATION, the Apartment benefits from an OPEN PLAN Living Room having a modern Kitchen to the side, Bedroom One and a modern Bathroom to the First Floor with a further Bedroom to the Second Floor, there is SECURE PARKING found to the Rear. HAVING NO UPWARD CHAIN, an early viewing is advised.





Sales 01384 444 004 / Lettings 01384 445 075
 hello@billingham.properties
 www.billingham.properties



Agents Note: Whilst every care has been taken to prepare these particulars, they are for guidance purposes only. All measurements are approximate and are for general guidance purposes only and whilst every care has been taken to ensure their accuracy, they should not be relied upon and potential buyers are advised to recheck the measurements.