



## ELM GROVE, Kinver, DY7 6JG

Offers In Region Of £325,000

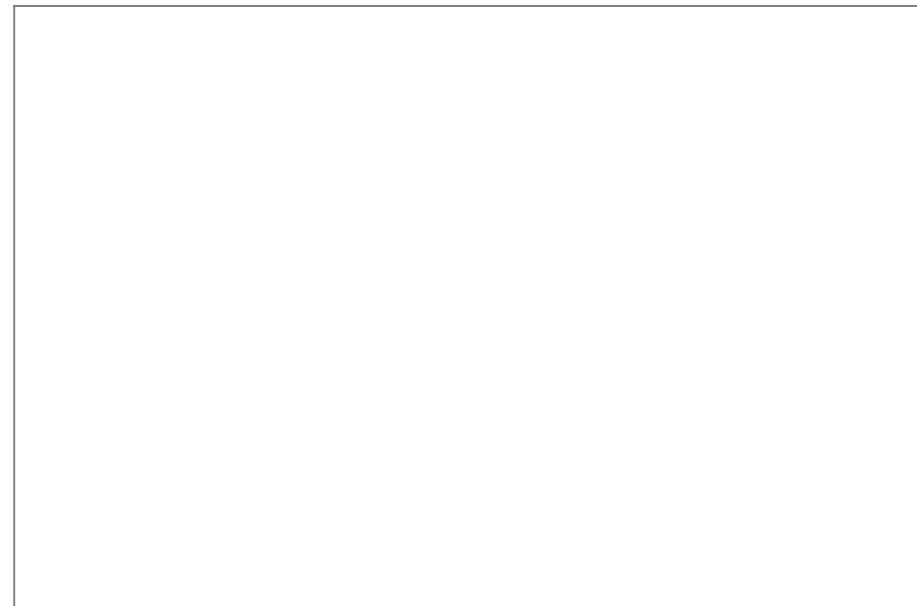
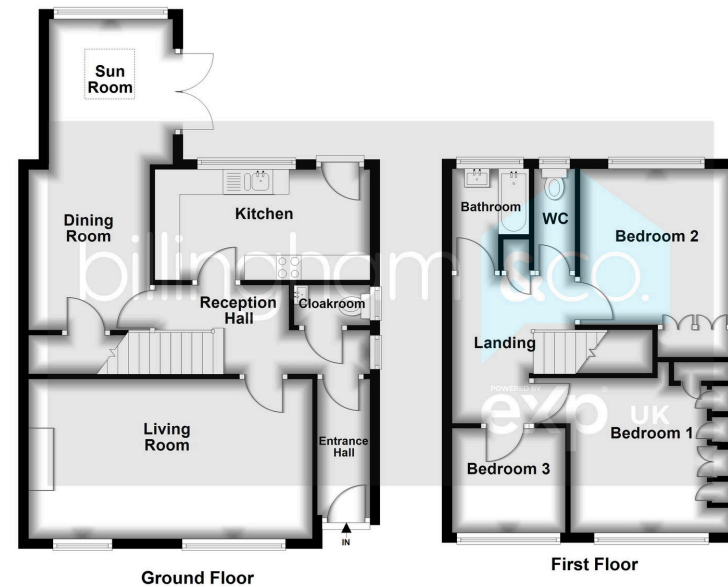
3 1 2

- An impressive THREE BEDROOM semi detached family home, rarely on the market.
- Thoughtfully extended to create a beautiful family home.
- Three Bedrooms, Family Bathroom, Separate WC.
- Thought an ideal purchase for a FTB or a young family.
- EPC Rating TBC.
- Occupying a pleasant quiet back water location, close to scenic walks.
- Living Room, Dining Room, Sun Room, Cloakroom, Modern Kitchen.
- Attractive low maintenance Rear Garden giving access to a Garage facility at the Rear.
- Offering ready to move in living accommodation, an early viewing is strongly advised.



Occupying a sought after location in Kinver within this quiet backwater position near to beautiful canal side walks, this IMPRESSIVE THREE BEDROOM SEMI DETACHED FAMILY HOME offers ready to move in living accommodation, having a great size Living Room, Dining Room, Sun Room, a modern Kitchen, Cloakroom, Bathroom with separate WC, low maintenance Rear Garden and a Garage facility. Pleasantly located close to scenic walks and within easy walking distance of the Village High Street, the family home has been thoughtfully extended to create the perfect home for young families or first time buyers, an early viewing is strongly advised.





Sales 01384 444 004 / Lettings 01384 445 075  
 hello@bilingham.properties  
 www.bilingham.properties



Agents Note: Whilst every care has been taken to prepare these particulars, they are for guidance purposes only. All measurements are approximate and are for general guidance purposes only and whilst every care has been taken to ensure their accuracy, they should not be relied upon and potential buyers are advised to recheck the measurements.